

EXPLANATION OF COLUMNAR SECTION

Shale or clay	Sandstone	Concretionary sandstone
Thin-bedded or shaly sandstone or sandy shale	Limestone or dolomite	Cherty limestone or dolomite
Carbonaceous shale	Coal	Bentonite
Anhydrite	Oil zone	Main producing oil zone Figure shows gravity of oil
	Gas zone	

PARTIAL COLUMNAR SECTION

SYSTEM SERIES GROUP	FORMATION AND MEMBER	THICKNESS	SYMBOL	SECTION
CRETACEOUS	Lenep sandstone	240'		Kis
	Beauregard shale	115'		
	Judith River formation	655'		
	Parkman sandstone member	420'		
	Claggett formation	600'		
	Virgelle sandstone member	80'		
	Elk Basin sandstone member	65'		
	Niobrara and Carlile shales	1000'		
	Terhight sandstone member	85'		
	Peay sandstone member	40'		
JURASSIC	Murray and Thermopsis shales	760'		Knc
	Greybull sandstone member	25'		
	Morrison formation	300'		
	Sundance formation	530'		
	Chugwater formation	500'		
	Embar formation	50'		
	Tensleep sandstone	200'		
	Amesden formation	250'		
	Madison limestone	250'		
	Carboniferous and older			

MAP EXPLANATION

EXPOSED ROCKS

- Gravel on Polecat Bench
- UNCONFORMITY
- Fort Union formation
- Lance formation
- Lenep sandstone
- Beauregard shale
- Judith River formation
- Claggett formation
- Eagle sandstone
- Telegraph Creek formation
- Niobrara and Carlile shales

WELL SYMBOLS

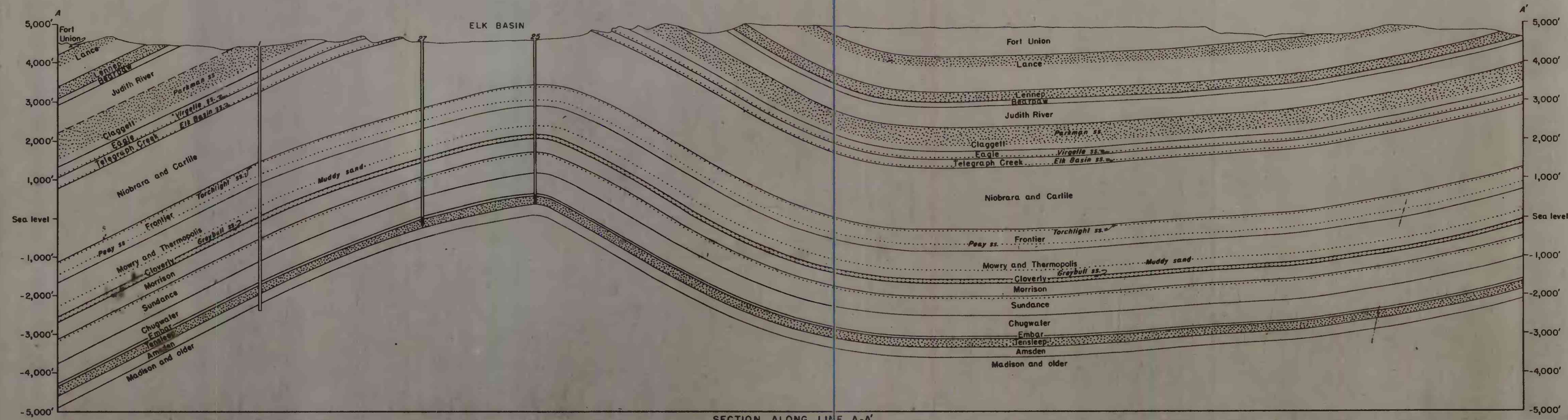
- Drilling well or location
- Oil well in Tensleep sandstone
- Dry hole which reached the Tensleep sandstone
- Well numbers indicate designation by operator
- Well status as of October 31, 1944

STRUCTURAL SYMBOLS

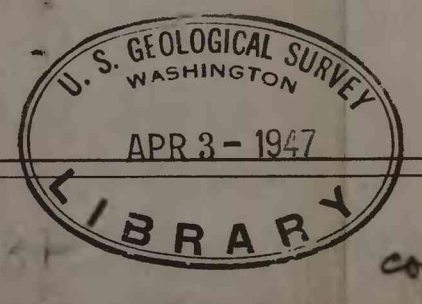
- Structure contours drawn on top of Tensleep sandstone; contour interval 100 feet; datum mean sea level
- Down-dropped side of normal fault
- Dip of fault plane
- Dip and strike of beds
- Dip of beds
- Horizontal beds
- Axis of syncline

UNITED STATES DEPARTMENT OF THE INTERIOR GEOLOGICAL SURVEY
GEOLOGIC AND STRUCTURE MAP OF THE ELK BASIN
 OIL AND GAS FIELD AND VICINITY,
 PARK COUNTY, WYOMING, AND CARBON COUNTY, MONTANA

SCALE 1:50,000
 1944



Compiled by C.E. Dobson, W.R. Kramer, and J.C. Miller, assisted by H.F. French, December 1943 by W.C. Sankoff, oil company locations and elevations used thereafter.



Wyoming (Elk Basin). Geol. 1:50,000. 1944.