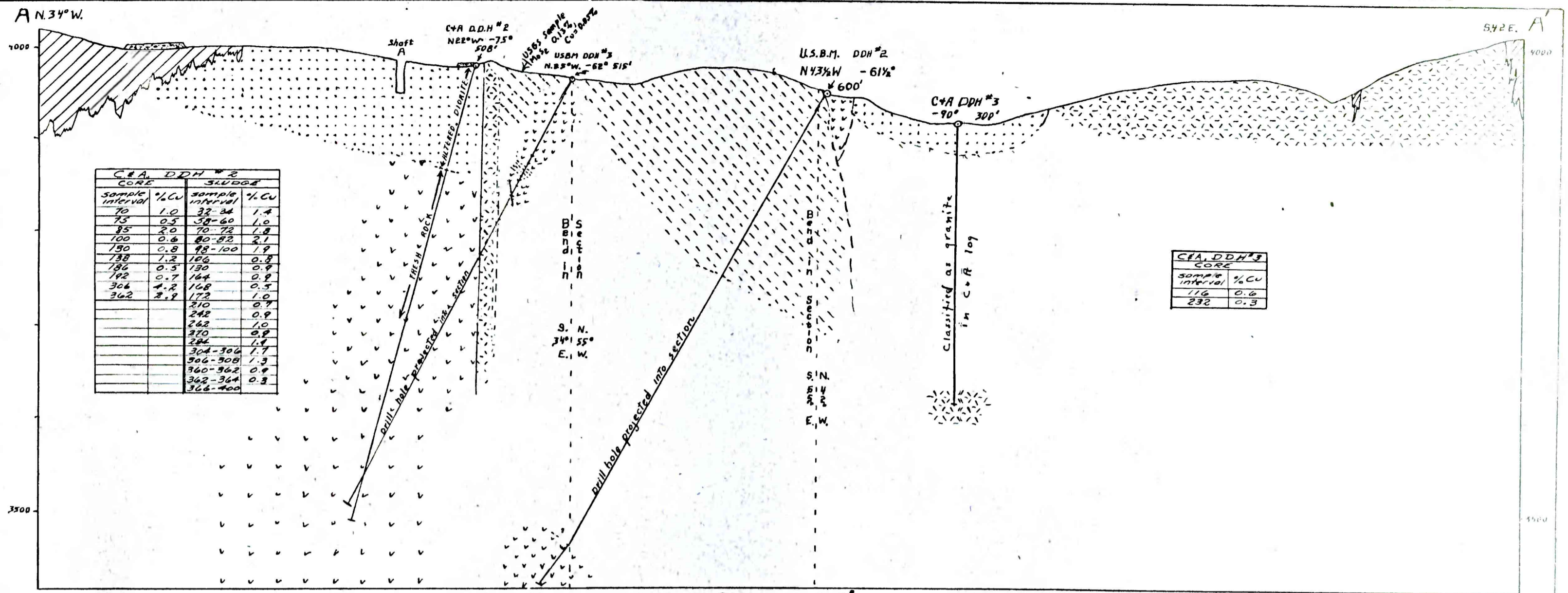
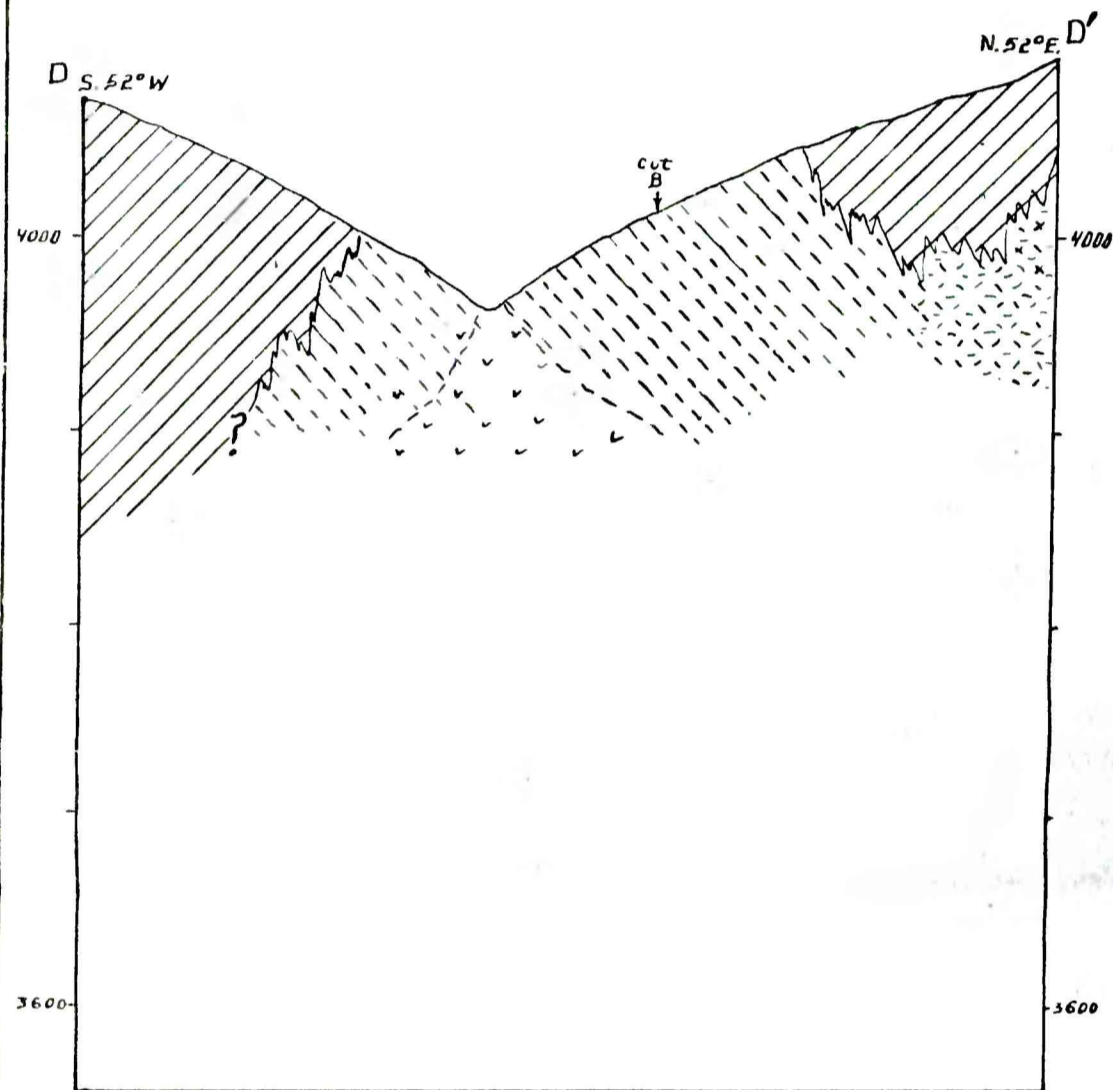


Section C-C'



Section A-A'

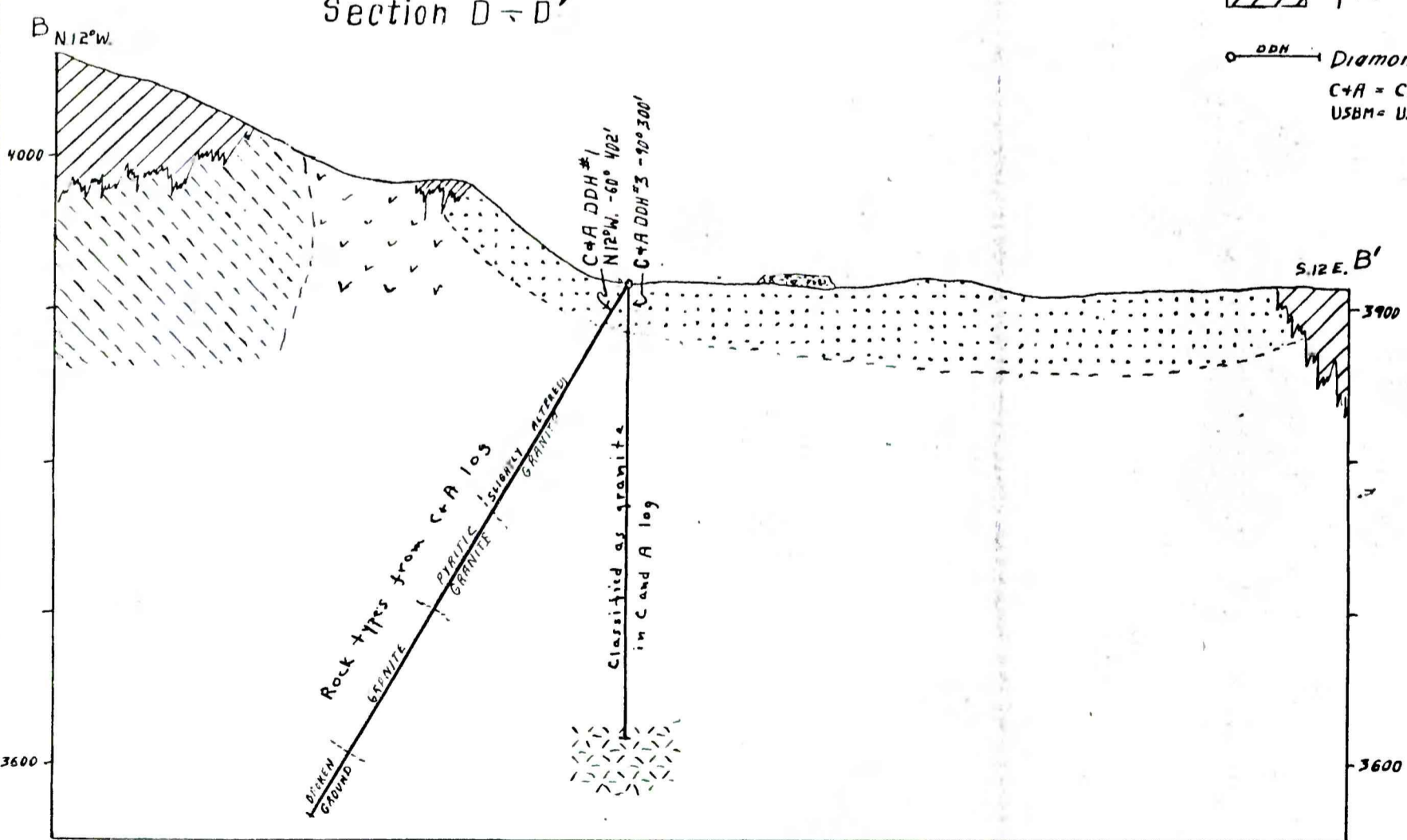


Section D-D'

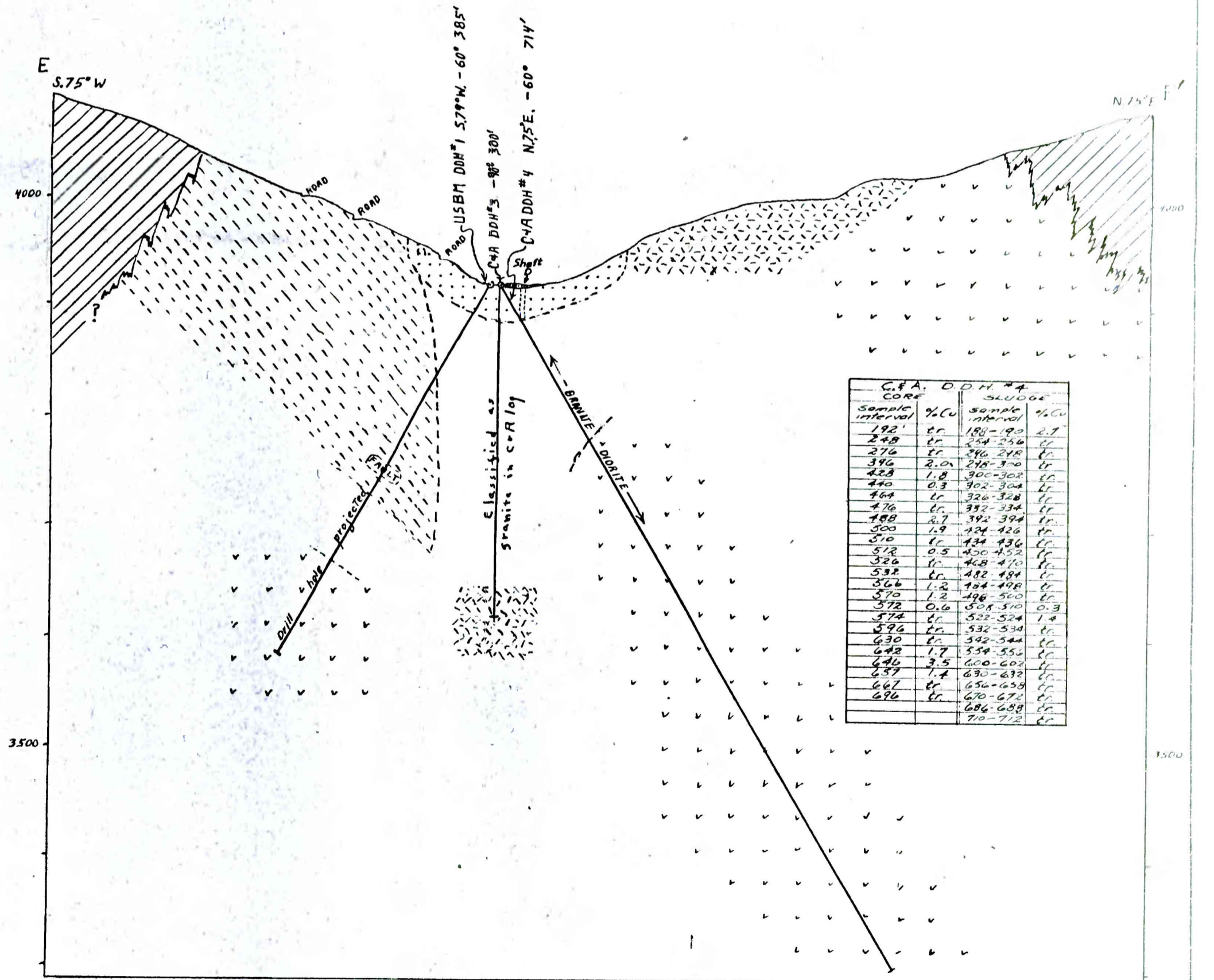
LEGEND

- Silicified breccia
- Surface alteration (clay)
- Biotite diorite
- Grandiorite porphyry
- Undifferentiated or mixed biotite diorite and grandiorite porphyry
- Quartzite

DDH - Diamond drill holes by  
C-A - Calumet and Arizona (1907-8)  
USBM - U.S. Bureau of Mines (1939)



Section B-B'



Section E-E'

