

45-58

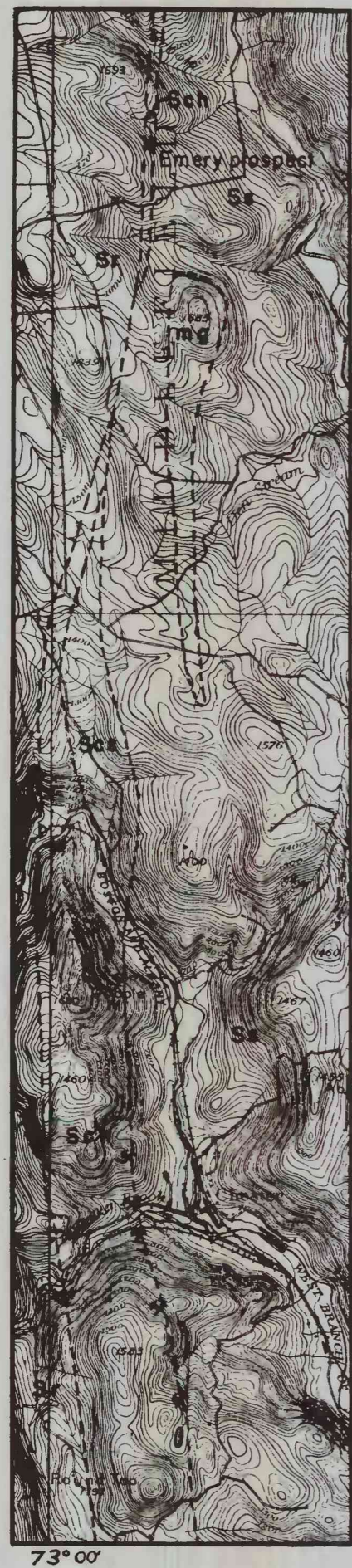


FIGURE 1
GEOLOGIC MAP OF THE CHESTER EMERY AREA, MASSACHUSETTS

Adapted from B. K. Emerson, U.S.G.S. Folio 50
Parts of Chesterfield and Becket quadrangle maps

EXPLANATION

- ✕ Mine openings
- Ss Savoy schist
- Sch Chester amphibolite
- Scs Serpentine
- Sr Rowe schist
- mg Middlefield granite

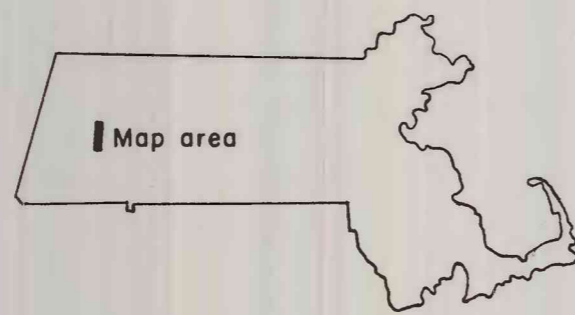
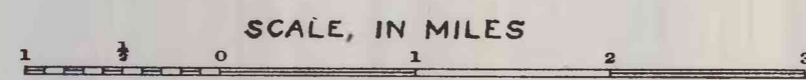
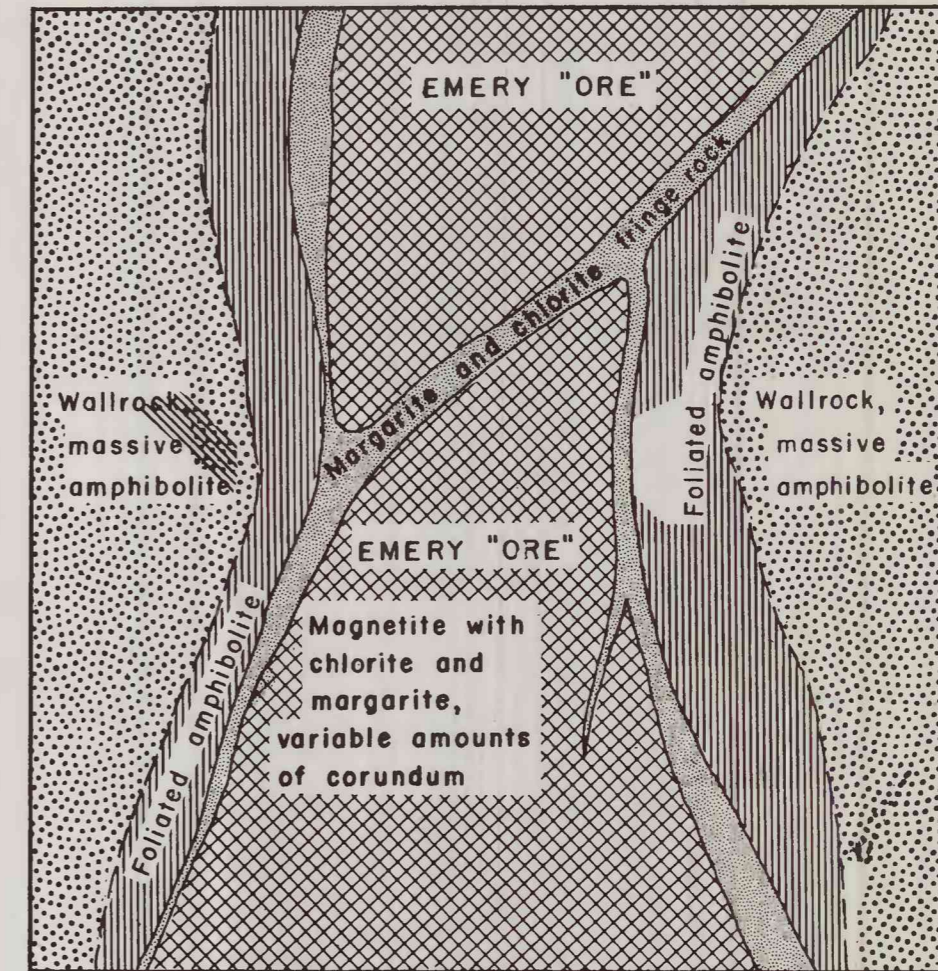


FIGURE 2
DIAGRAMMATIC SECTION THROUGH THE CHESTER EMERY VEIN
Width of vein 2 to 20 feet



Compiled from field data

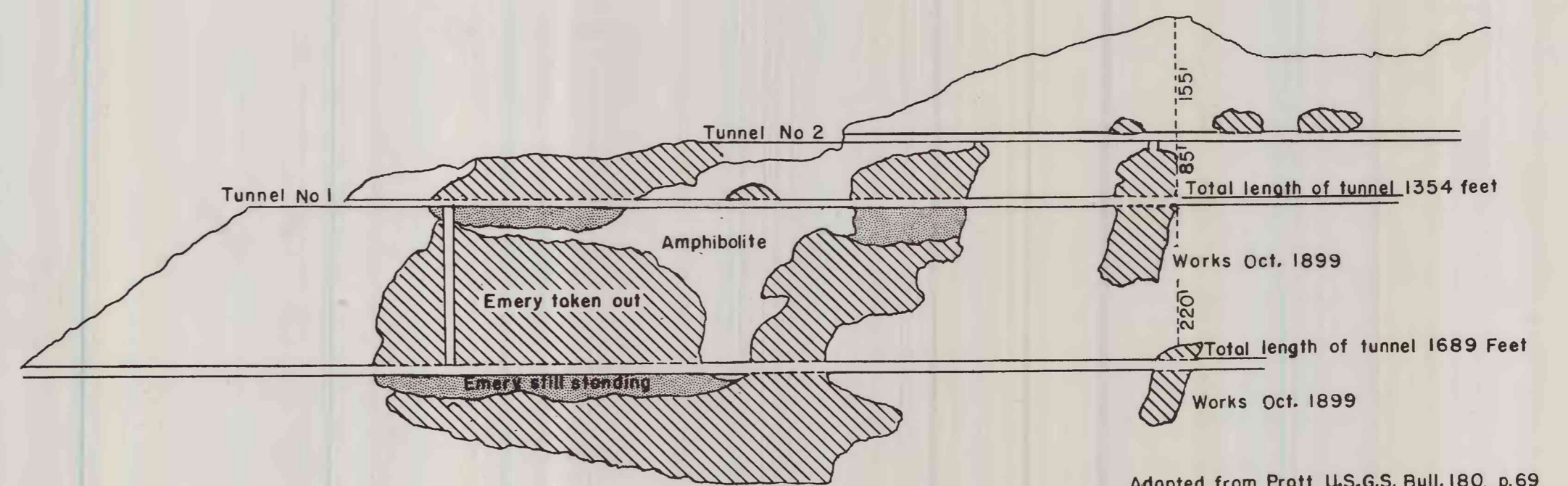
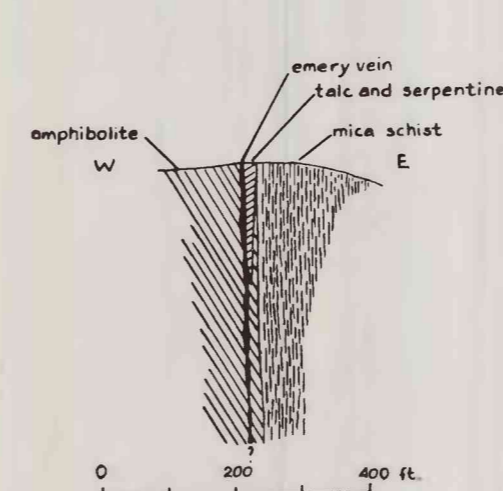


FIGURE 3: LONGITUDINAL SECTION OF OLD EMERY MINE, CHESTER, showing workings as of October, 1899.

Adapted from Pratt, U.S.G.S. Bull. 180, p.69

- EXPLANATION**
- EXPOSURE
 - FORMATION CONTACT, BETWEEN AMPHIBOLITE TO WEST AND MICA SCHIST TO EAST
 - ↘ STRIKE AND DIP OF FOLIATION
 - ⊥ VERTICAL FOLIATION
 - ↘ FRACTURE CLEAVAGE
 - ↘ DRAG FOLD, WITH PLUNGE OF AXIS
 - PROSPECT TRENCH
 - MINE DUMP
 - MINE ADIT
 - MINE SHAFT



DIAGRAMMATIC CROSS SECTION OF EMERY BELT

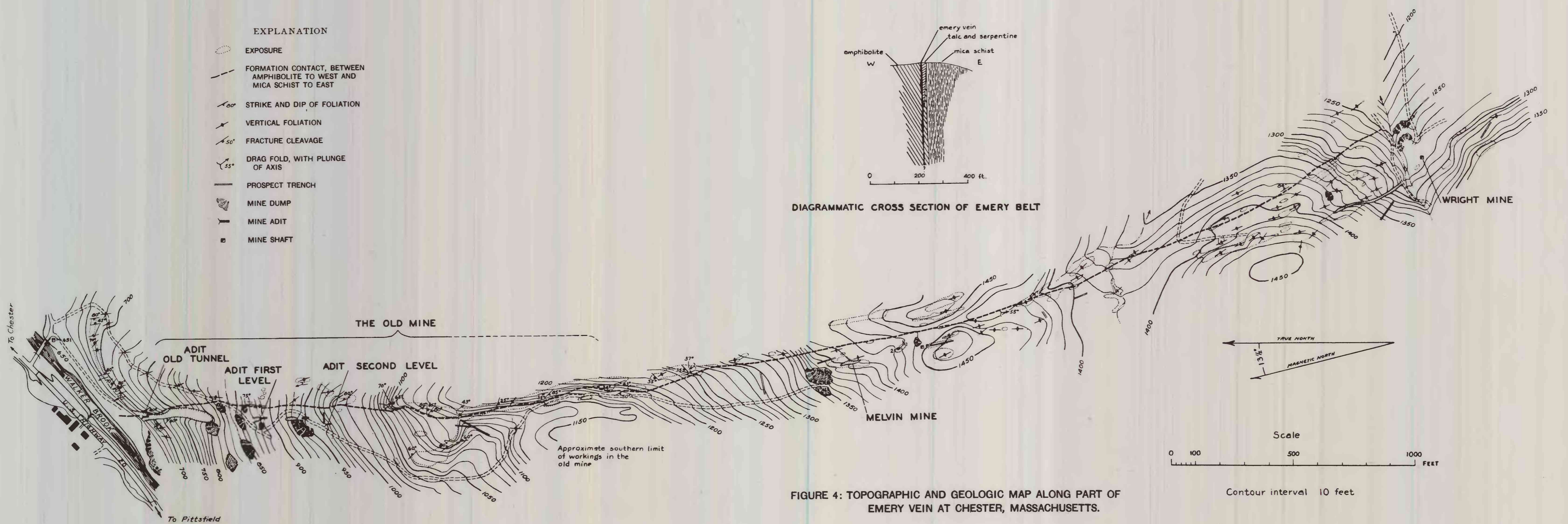


FIGURE 4: TOPOGRAPHIC AND GEOLOGIC MAP ALONG PART OF EMERY VEIN AT CHESTER, MASSACHUSETTS.

Scale
0 100 500 1000 FEET
Contour interval 10 feet