

FIGURE 1. GEOLOGIC MAP OF THE LEE MASSACHUSETTS AREA

EXPLANATION OF SYMBOLS USED IN FIGURE 1

As adapted from maps by Emerson and Dale.

- | | |
|---|--|
| <ul style="list-style-type: none"> Berkshire schist Upper member; calcite marble Middle member; quartzite Lower member; dolomite marble Cheshire (?) quartzite Older gneisses and schists | <p>Zones of Lower member of the Stockbridge limestone as mapped for this report.</p> <ul style="list-style-type: none"> F
White dolomite, gray bands E
Upper white beds D
Upper gray beds C
Lower white beds B
Lower gray beds A
Gray schistose beds (upper part of Cc?) |
|---|--|
-
- | |
|--|
| <ul style="list-style-type: none"> Strike and dip of foliation and bedding Vertical beds Horizontal beds Fault Formation and zone boundaries Quarries; numbered as in text Principal roads |
|--|

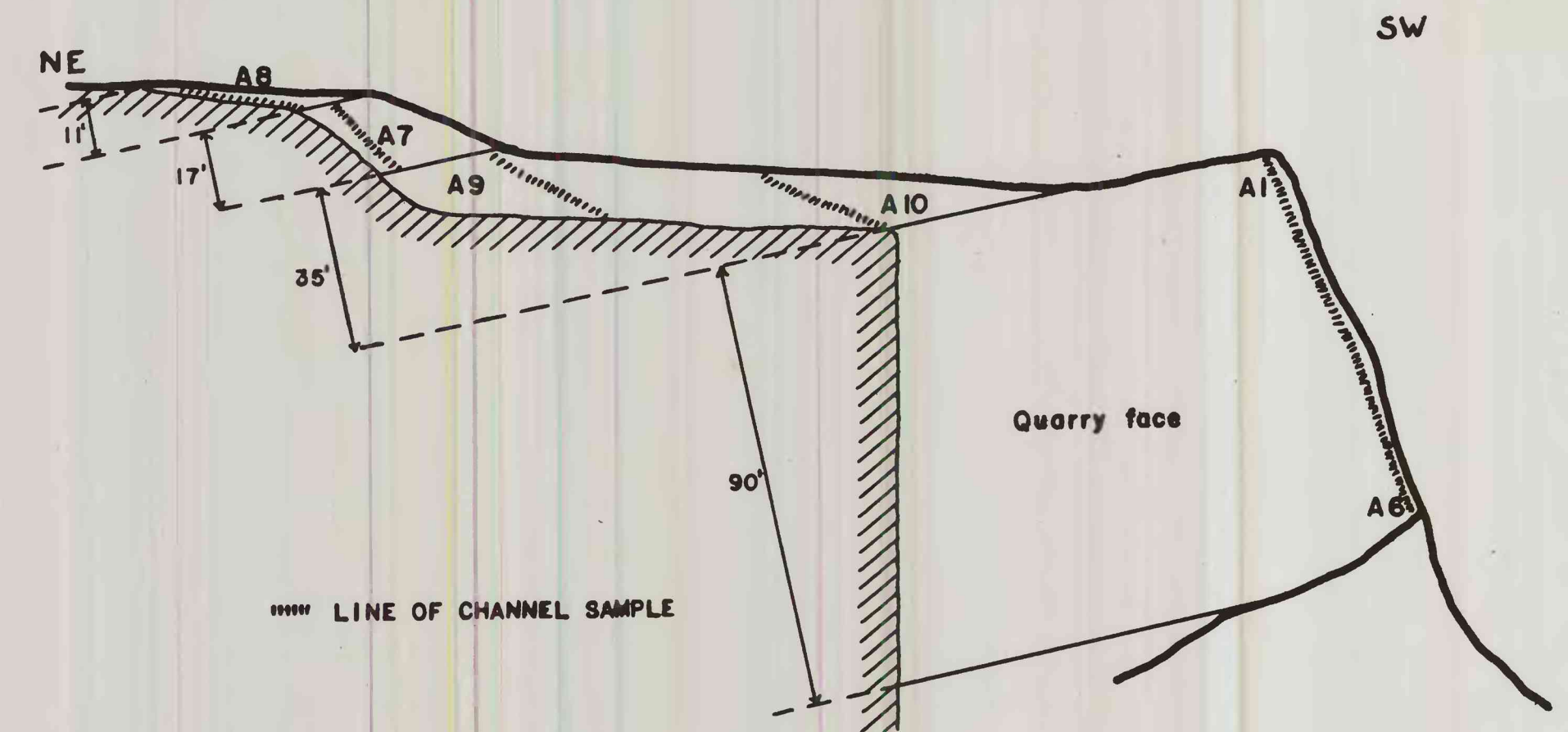


FIGURE 2: DIAGRAM SHOWING LOCATIONS OF CHANNEL SAMPLES ON SOUTHEAST FACE OF "NEW QUARRY" OF THE LEE MARBLE WORKS.

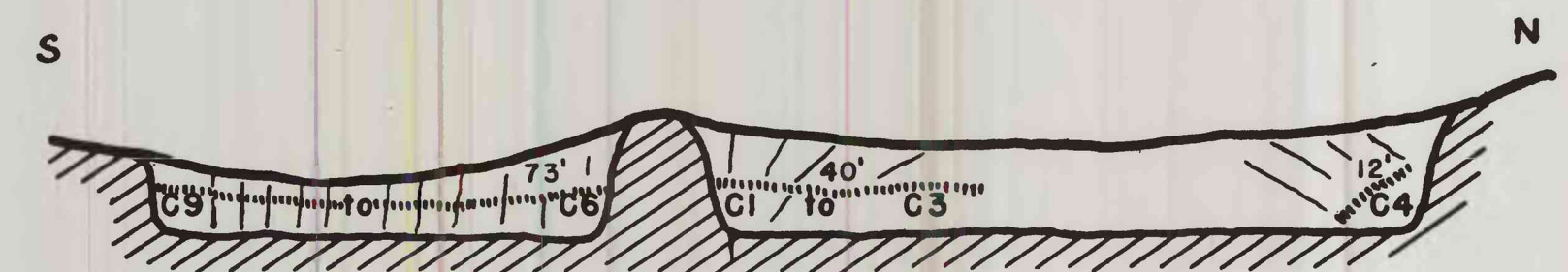


FIGURE 3: DIAGRAM SHOWING LOCATIONS OF CHANNEL SAMPLES TAKEN ACROSS FACES OF THE STANDARD LIME CO., QUARRY, ON FAIRVIEW ST., LEE, MASSACHUSETTS.

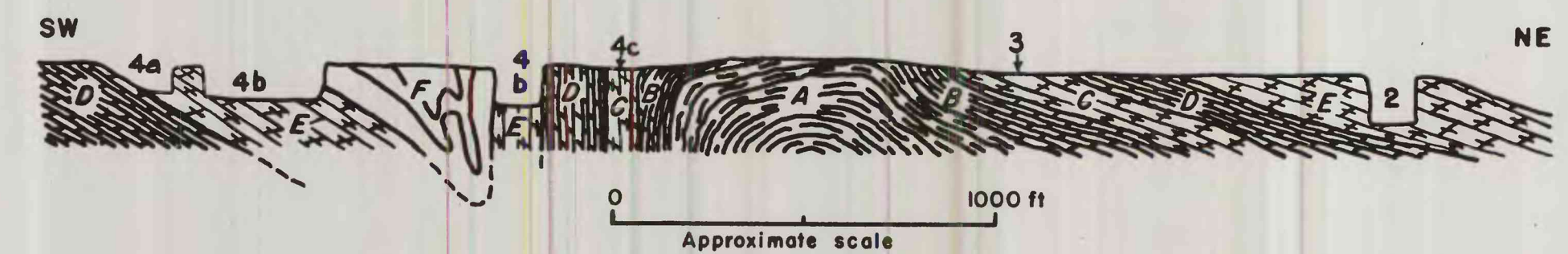


FIGURE 4: DIAGRAMMATIC CROSS SECTION OF THE LEE MARBLE QUARRY AREA, MASSACHUSETTS. Quarries are numbered and lithologic zones are lettered as in text. Positions of quarries 3 and 4c projected to section.