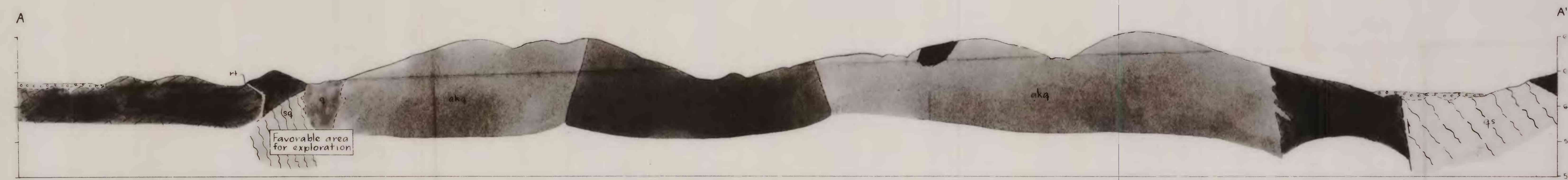
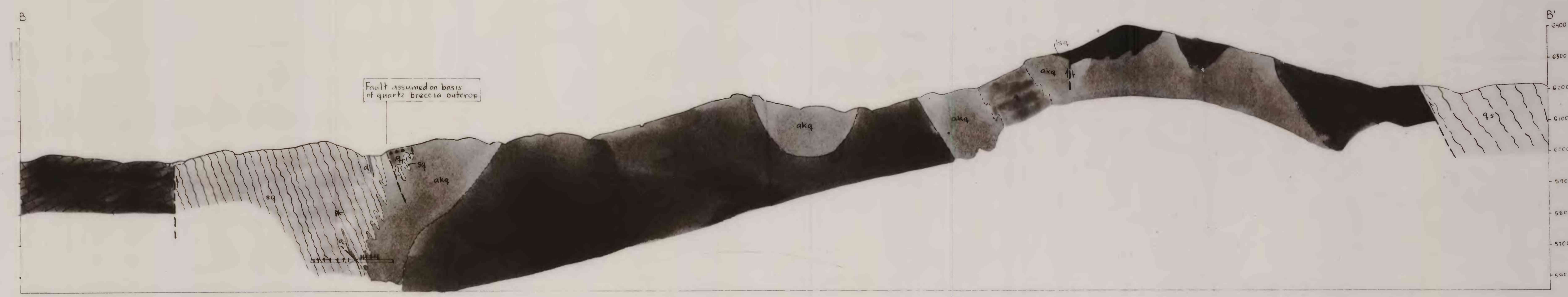
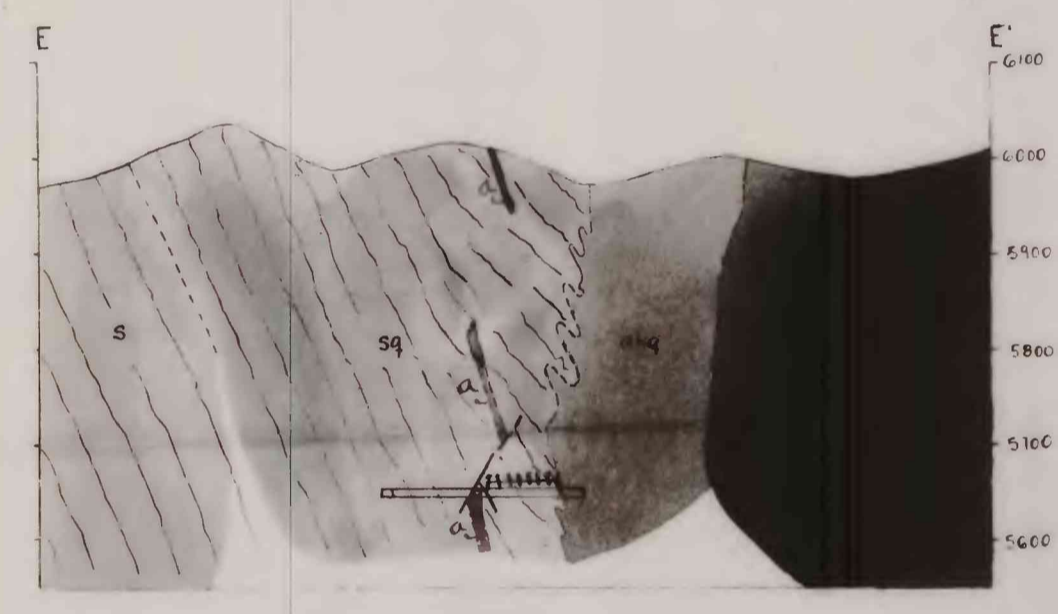
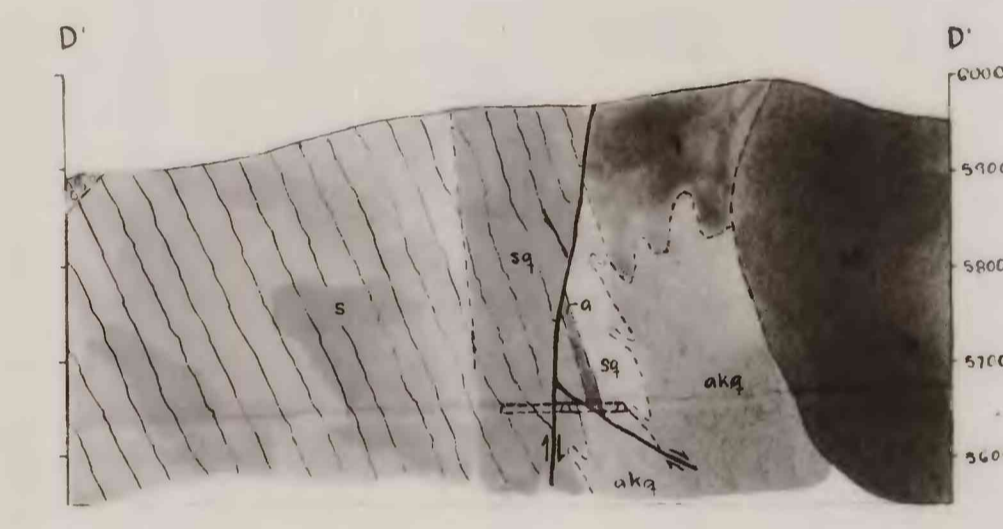
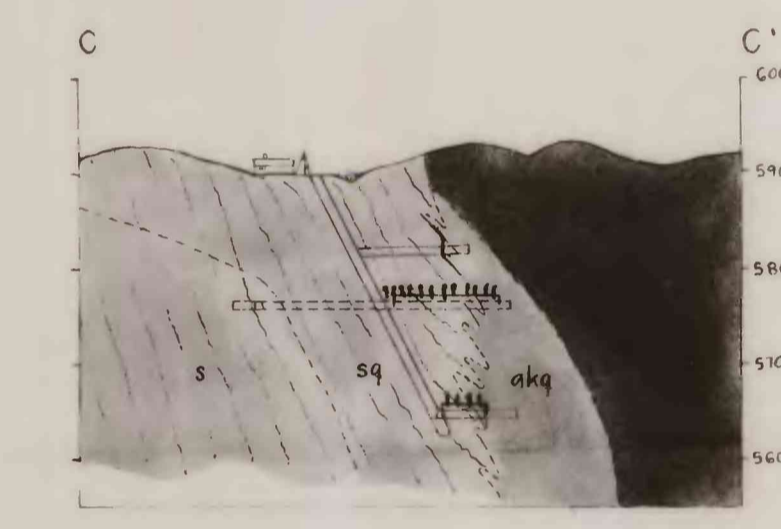
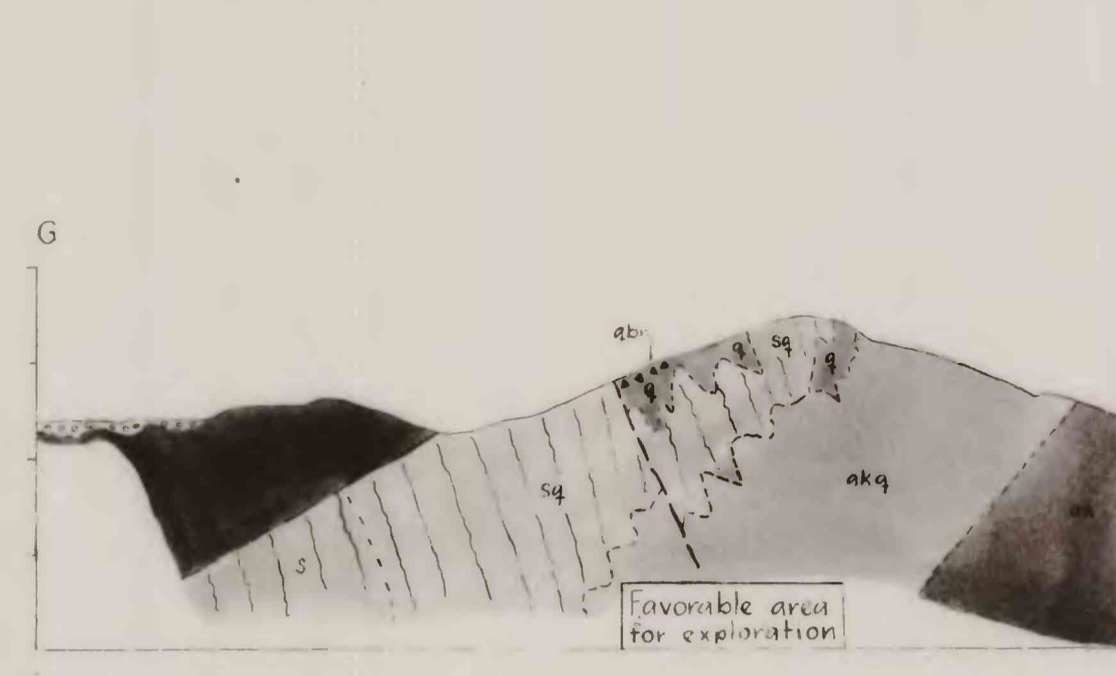
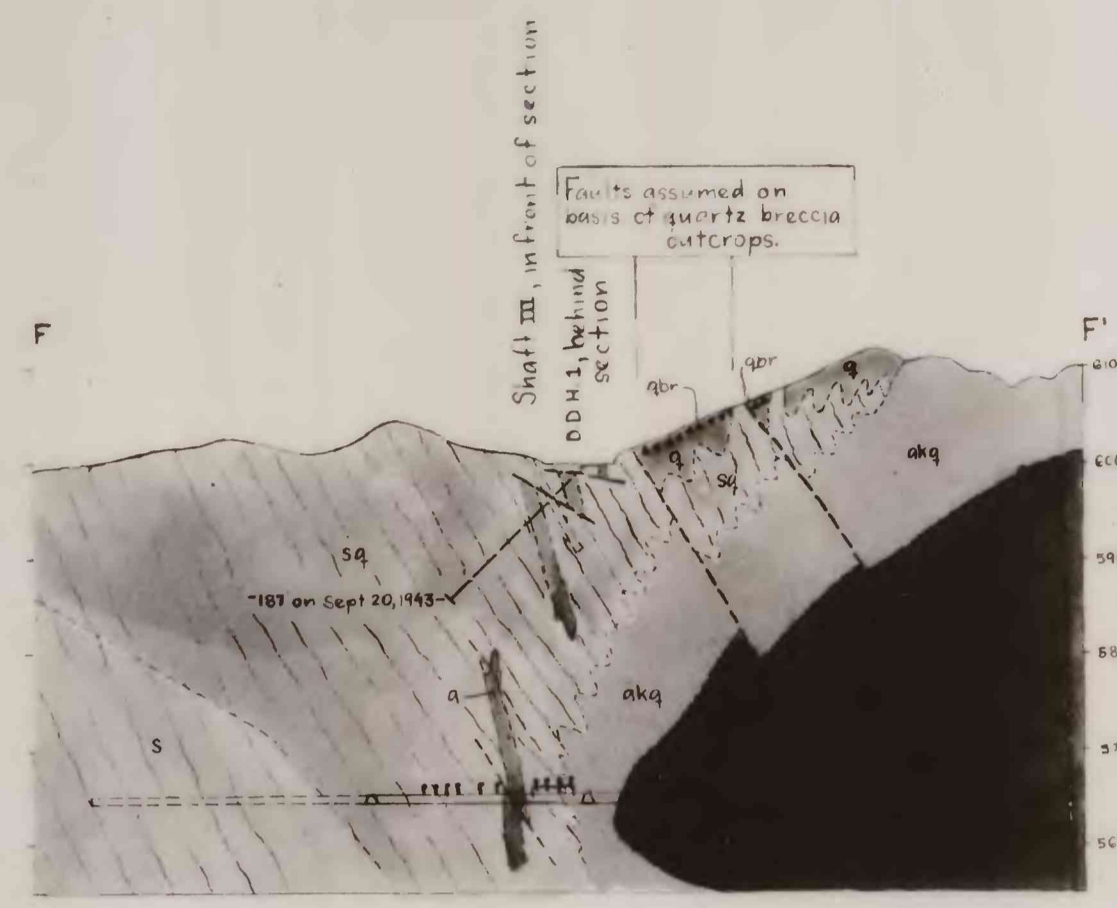


FILE COPY
49-5
Geological Survey
Public Information

EXPLANATION

- Alluvium
- Andesite
- Rhyolite tuff
- Quartz masses; qbr, quartz breccia
- Alaskite
- Alaskite with many quartz veins intrusive contact
- Limestone
- Limestone with many quartz veins uncertainty
- Biotite and muscovite schist
- Schist with many quartz veins
- Sericitic quartzite
- Geologic boundary located approximate
- Fault, showing relative displacement
- Underground workings workings not in plane of section
- Diamond drill hole
- Ore zone used by U.S. Bureau of Mines in War Minerals Report 1940
- Enough assay, containing .20% or more MoS₂



SECTIONS OF THE
HALL MOLYBDENUM PROPERTY
NYE COUNTY, NEVADA