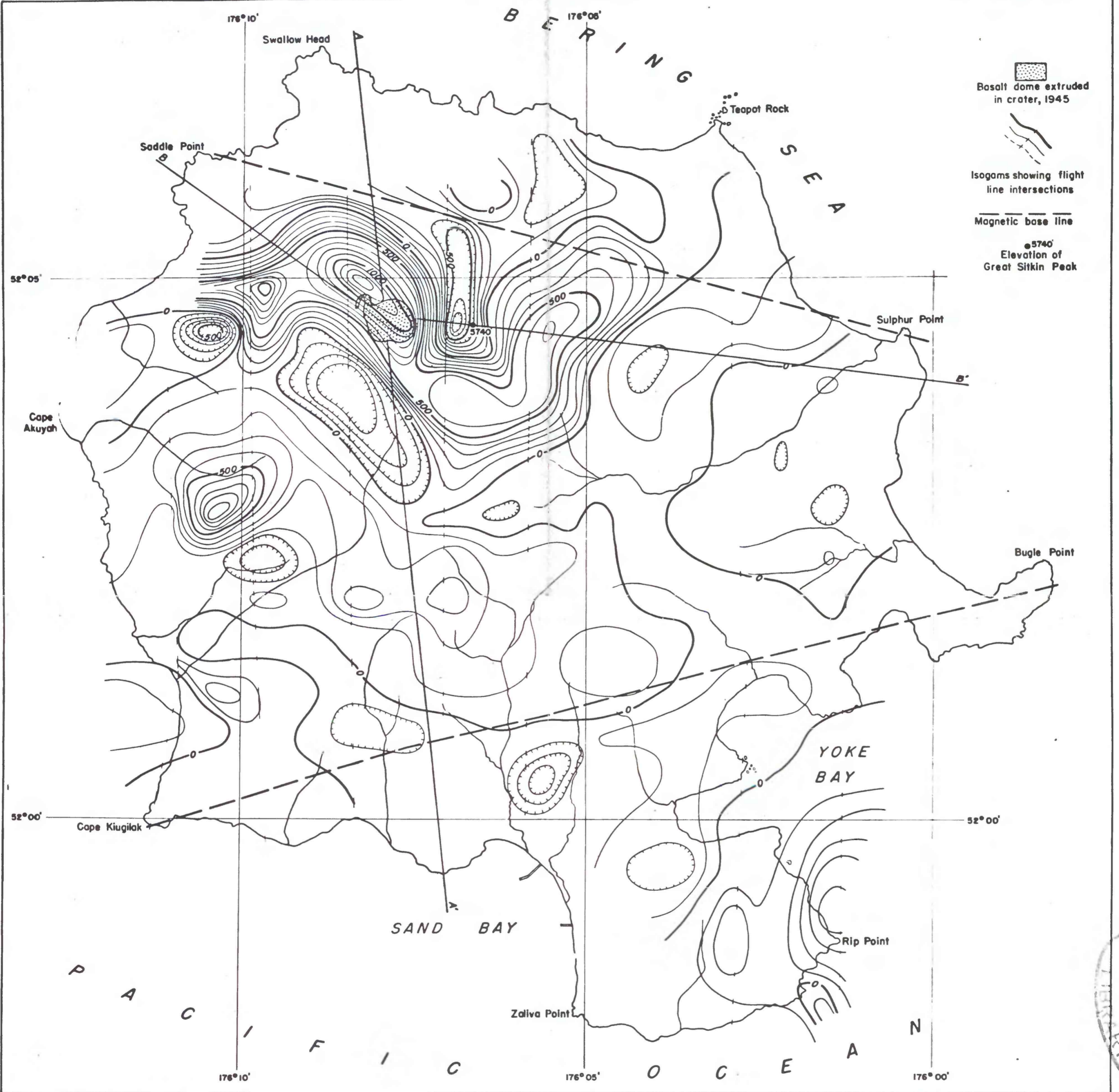


UNITED STATES DEPARTMENT OF THE INTERIOR
GEOLOGICAL SURVEY

OFFICE OF NAVAL RESEARCH
PROJECT VOLCANO

GEOPHYSICAL INVESTIGATIONS
PRELIMINARY MAP



Base from U.S. Coast and Geodetic Survey
Charts 9139 and 9193

Data by F. Keller and J.L. Meuschke
Compilation by F. Keller

AEROMAGNETIC MAP OF GREAT SITKIN ISLAND, ALASKA

Magnetic datum assumed 1000
gammas at Cape Kiugilik

0 1 MILES

Flight level 7500 feet
1947

Second vertical derivative $\frac{\partial^2 \Delta T}{\partial z^2}$ of magnetic field
interval - 100 gammas / (0.5 mile)²

Scale 1:55,000

Alaska (Great Sitkin Island area) Aeromagnetic
sheet #
cop 2
1:55,000. 1949

