






EXPLANATION





Bedded rocks

- Aluvium and fill.  Recent
- Melagraywacke, phyllite, and schist.  Jurassic-Cretaceous

Intrusive rocks

- Monzodiorite.  Jurassic-Cretaceous
- Dunite and wehrlite.  Jurassic-Cretaceous
- Olivine augite.  Jurassic-Cretaceous
- Lherzolite and wehrlite with accessory hypersthene and calcic plagioclase.  Jurassic-Cretaceous
- Hornblendite.  Jurassic-Cretaceous

Structural symbol

- Dip and strike of bedding, contacts, or layering in intrusive rocks.  45
- High angle fault.  F
- Contacts, dashed where inferred. 
- Limit of area mapped. 

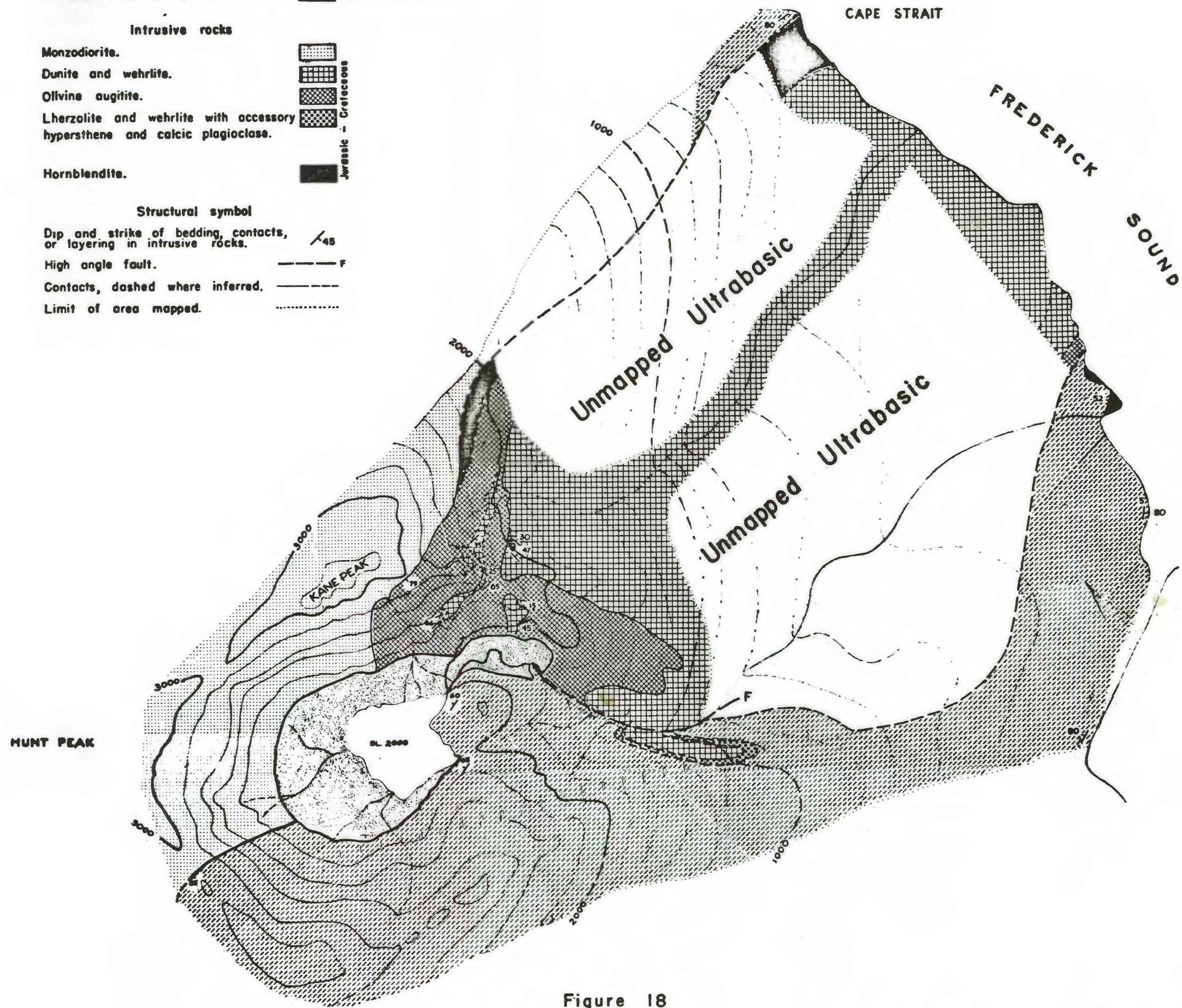


Figure 18

GEOLOGIC AND TOPOGRAPHIC SKETCH MAP OF THE KANE PEAK ULTRABASIC AREA, KUPREANOF ISLAND, SOUTHEASTERN ALASKA

1000 0 1000 2000 3000 4000 5000 FEET

Datum sea level, contour interval 200 feet

Mapped by pace-compass and aneroid barometer by Matt S. Walton, Jr.