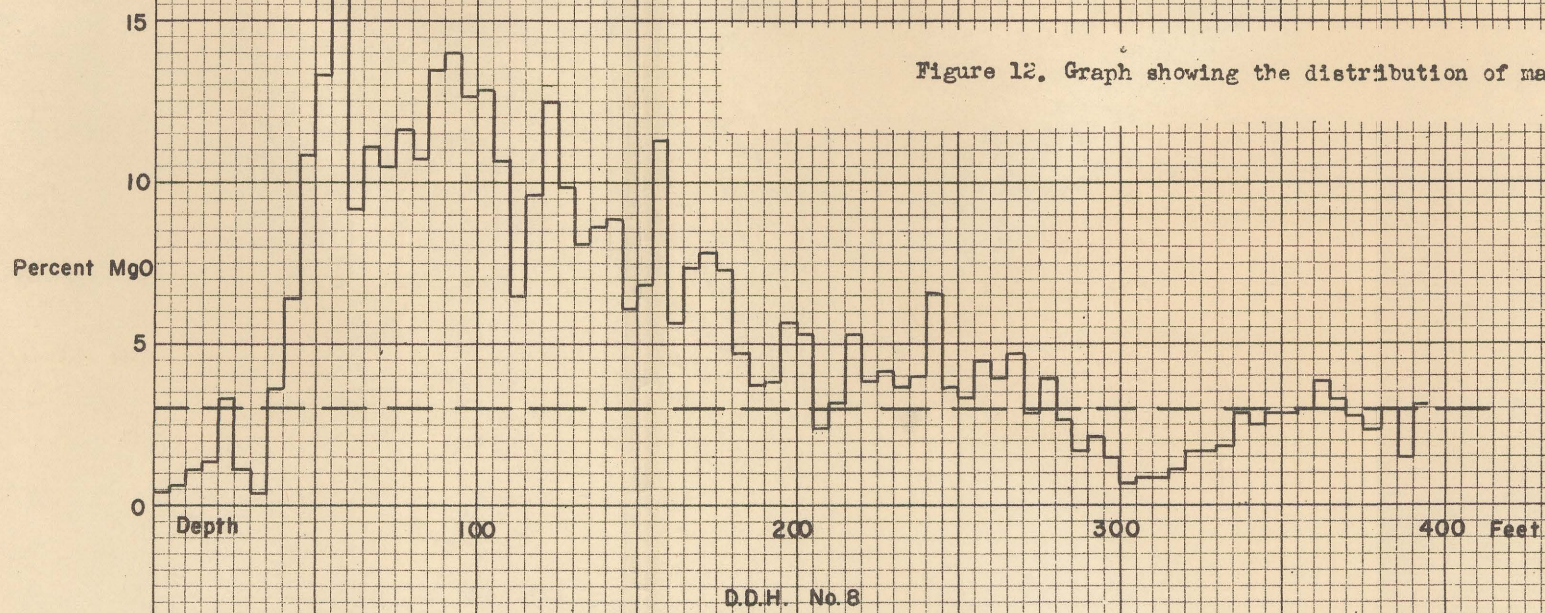


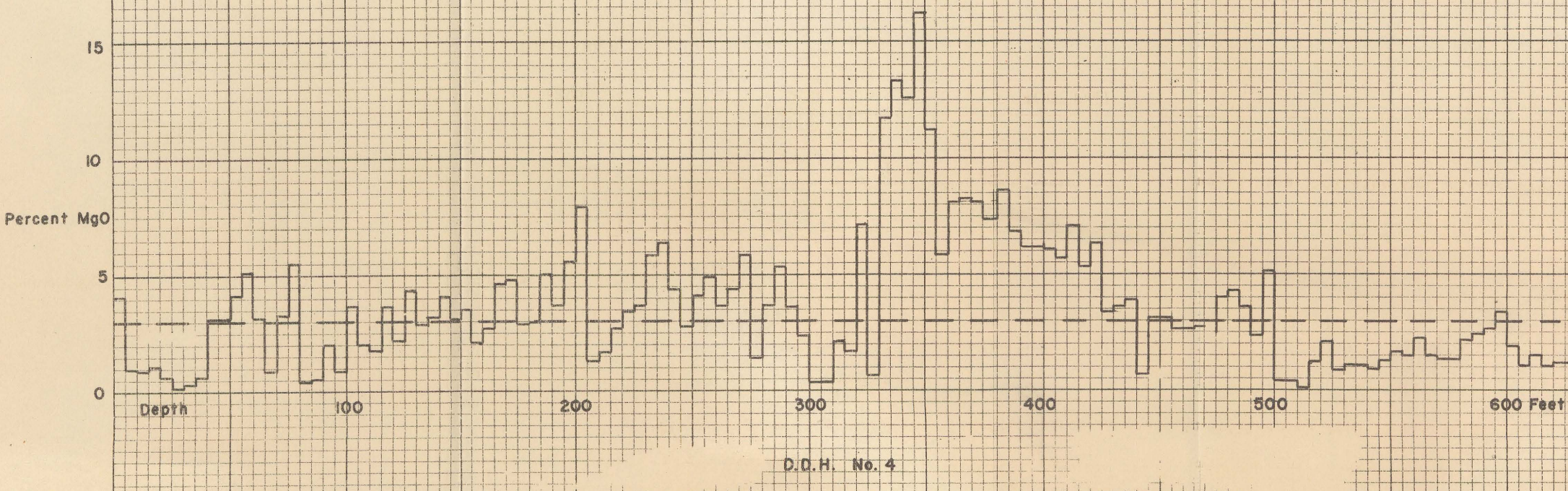
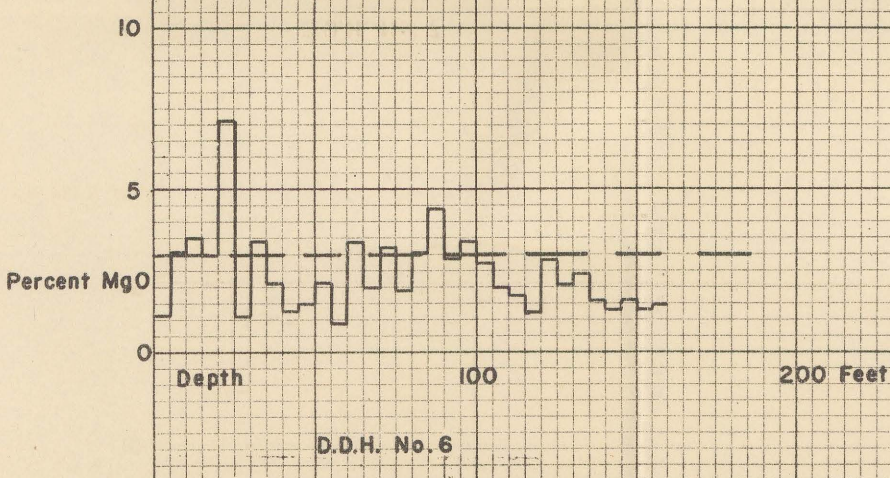
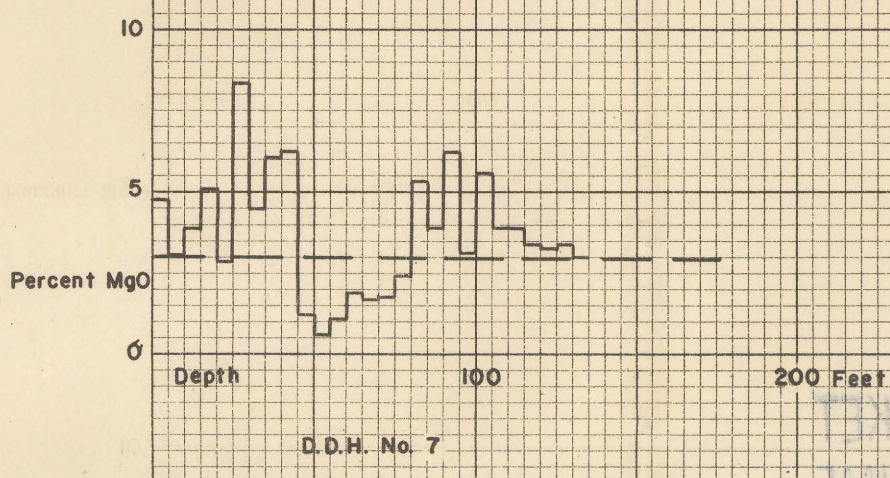
U.S. GEOLOGICAL SURVEY
MAR 8 1980
10-12-80

DEPARTMENT OF THE INTERIOR
UNITED STATES GEOLOGICAL SURVEY

Figure 12. Graph showing the distribution of magnesia in drill-cores from limestone deposit 1.



Dashed line indicates approximate arbitrary magnesia limit



Coring and analyses by the U.S. Bureau of Mines

95606

THIS map is preliminary and has not been edited or reviewed for conformity with U. S. Geological Survey standards and nomenclature.