

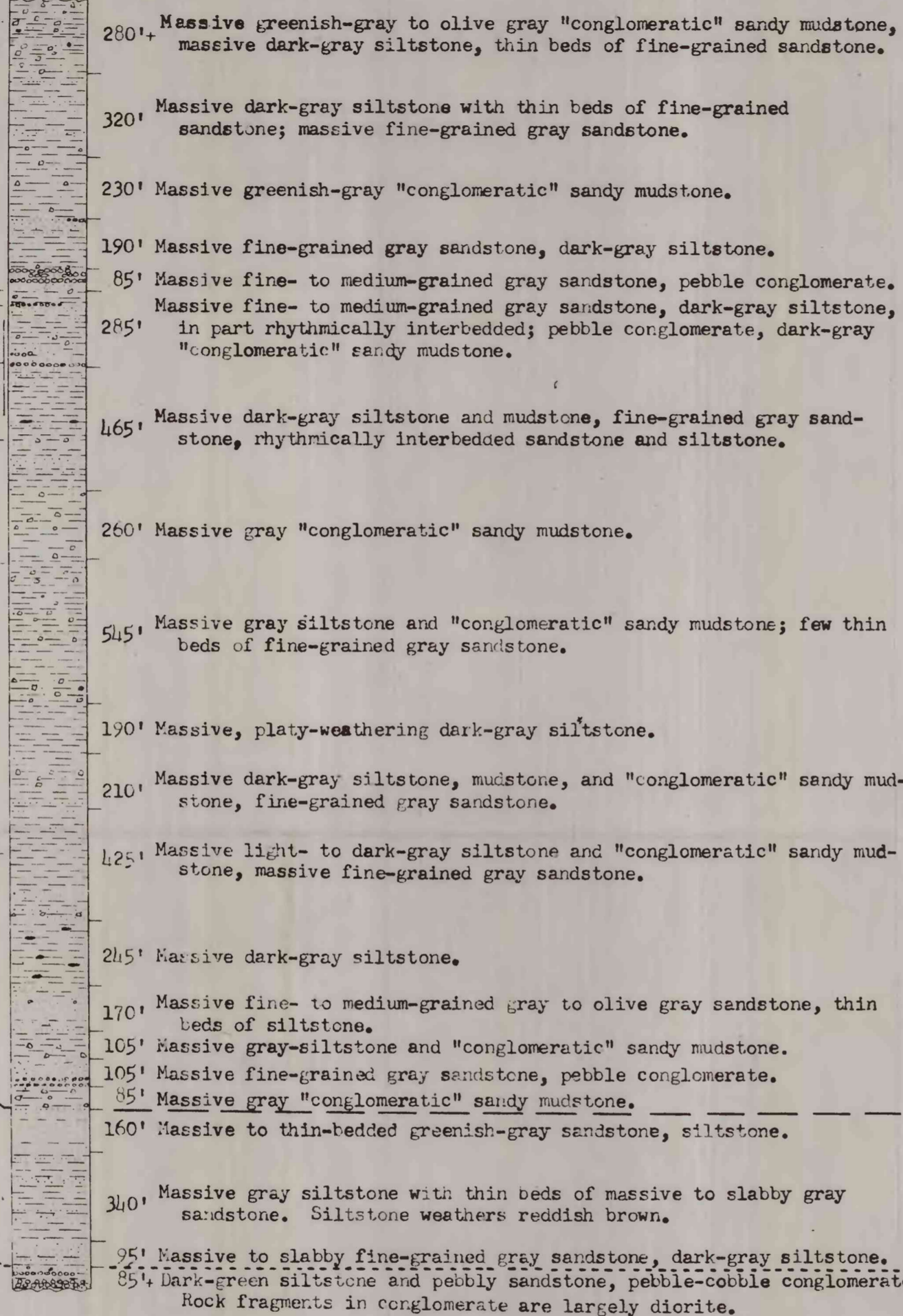
# CORRELATED COLUMNAR SECTIONS OF TERTIARY ROCKS IN THE LITUYA DISTRICT, ALASKA

BY  
**DON J. MILLER**  
1953

Note: This chart is preliminary and has not been edited or reviewed for conformity with U.S. Geological Survey standards and nomenclature.

## MEASURED SECTION LOWER TOPSY CREEK

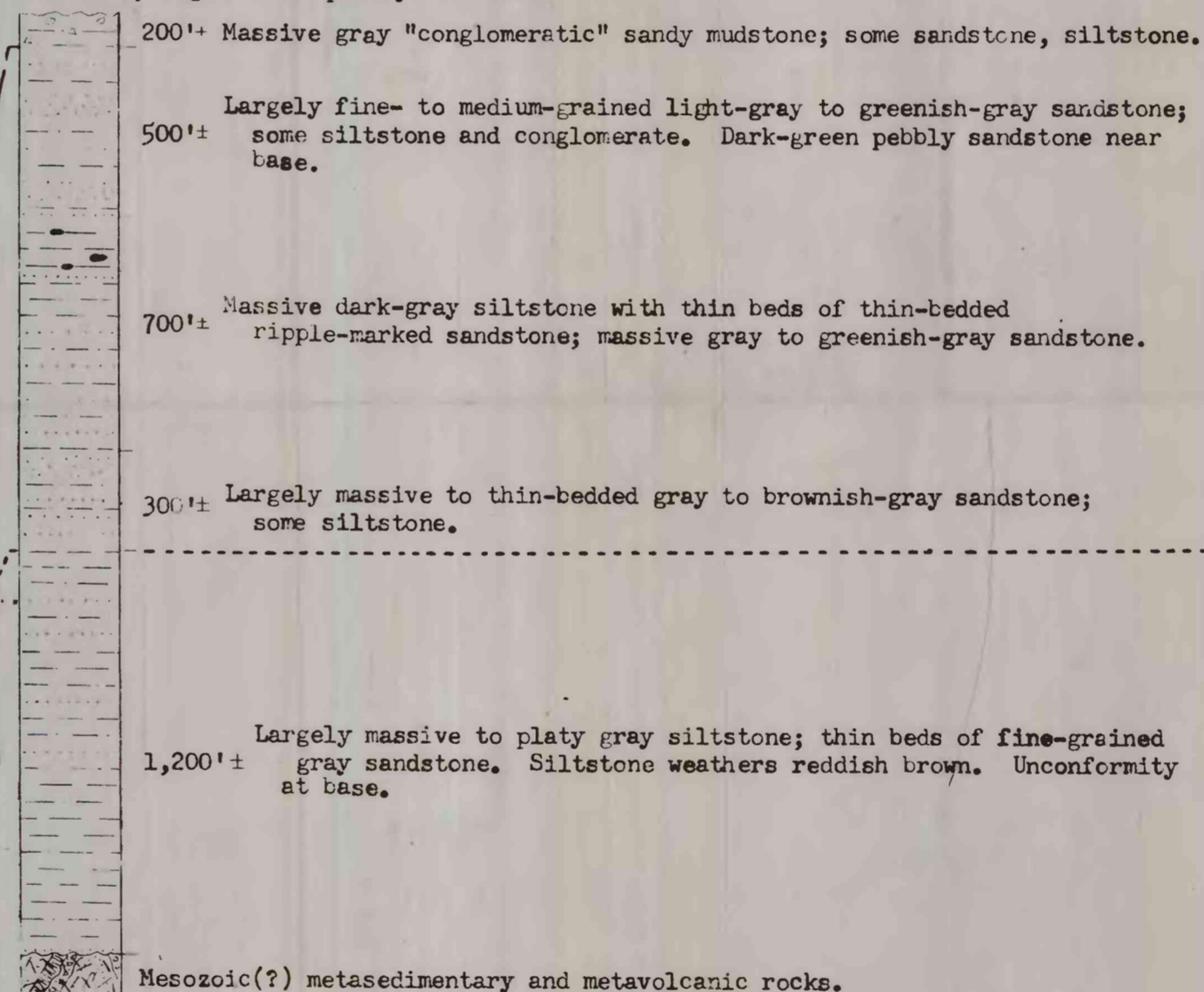
Outer margin of reef near mouth of Topsy Creek; section overlain by about 5,000' of younger beds of similar lithology, but less indurated, between Crillon River and La Perouse Glacier



Axis of anticline on Topsy Creek; section apparently underlain by volcanic rocks on Steelhead Creek to northwest.

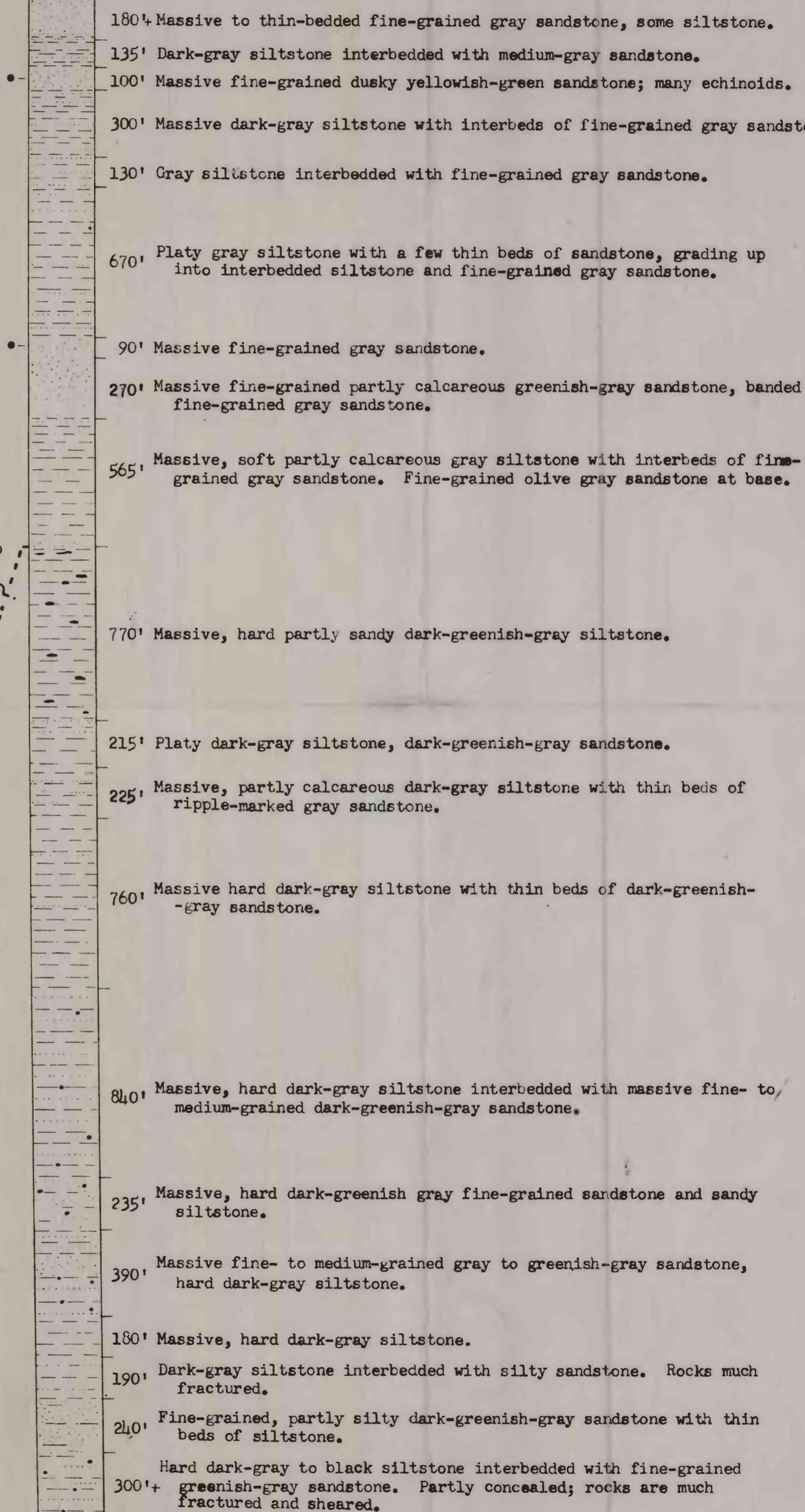
## GENERALIZED SECTION UPPER TOPSY CREEK

Topsy Creek, about 4,000' upstream from axis of syncline; higher beds partly concealed.



## MEASURED SECTION ICY POINT

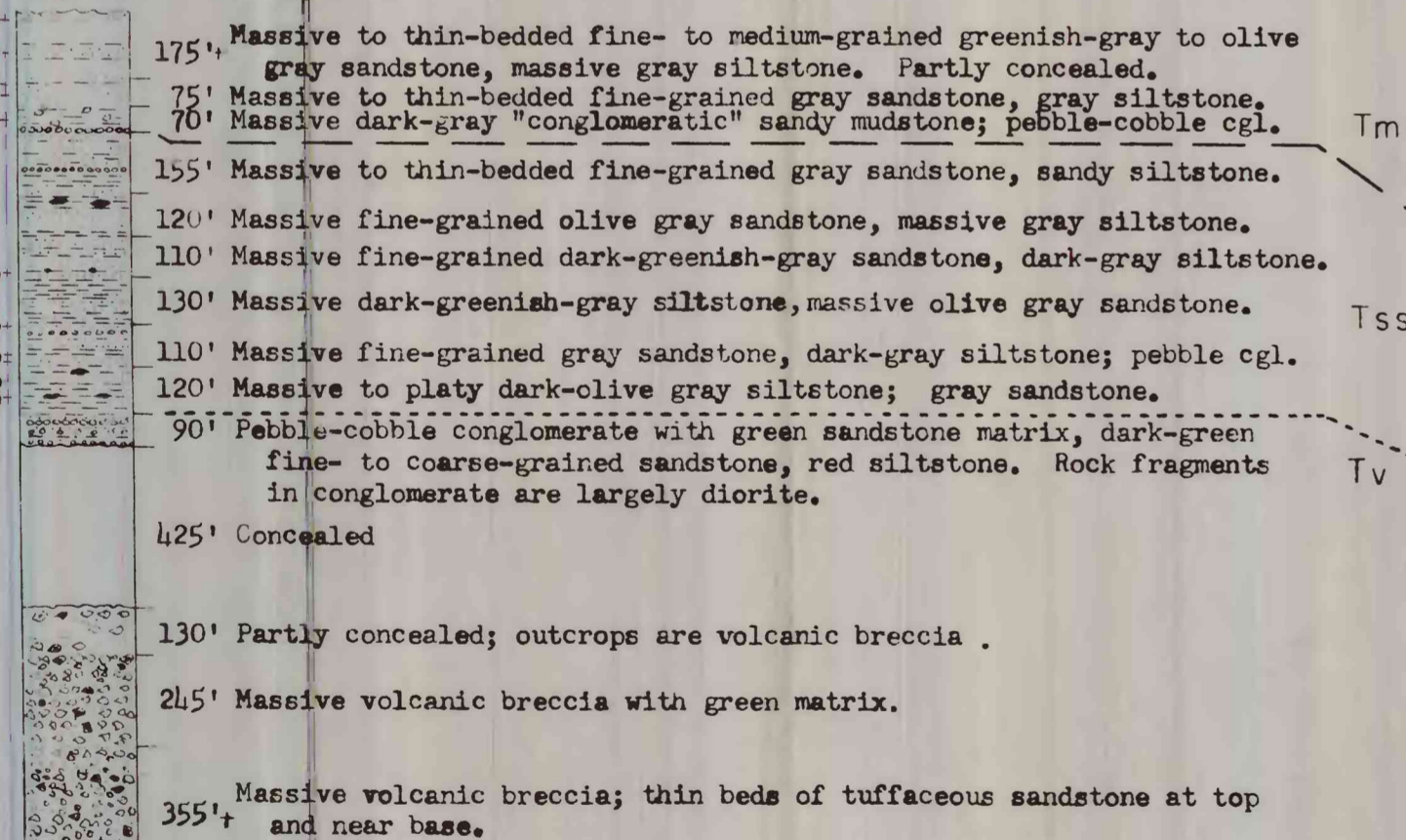
Outer margin of reef west of Icy Point; higher beds not exposed



Reef at mouth of Kaknau Creek; lower beds not exposed

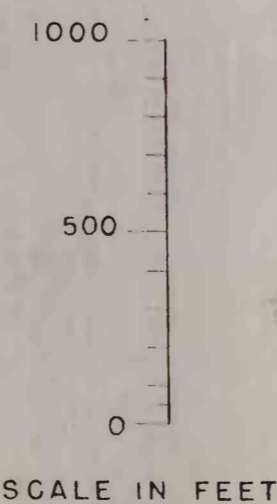
## MEASURED SECTION CENOTAPH ISLAND

Southeast shore of island; higher beds not exposed.



East cape of island; lower beds not exposed

## EXPLANATION FOR COLUMNAR SECTIONS



- Volcanic breccia
- "Conglomeratic" sandy mudstone
- Conglomerate
- Massive sandstone
- Bedded sandstone
- Sandy siltstone or mudstone
- Siltstone
- Calcareous concretions
- Location of fossil collection

See geologic map for explanation of letter symbols representing stratigraphic units.