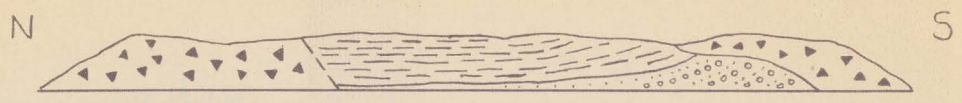
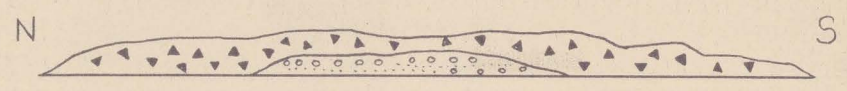


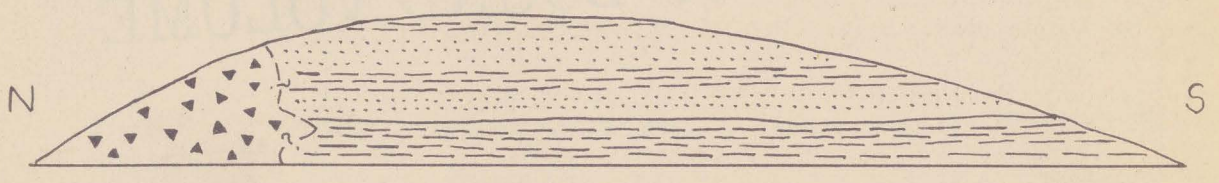
(200)  
 R290  
 no. 198



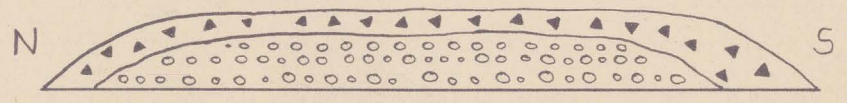
a) East bank of railroad cut at mile 342.0



b) West bank of railroad cut at mile 343.3



c) East bank of railroad cut at mile 343.6



d) West bank of railroad cut at mile 345.4

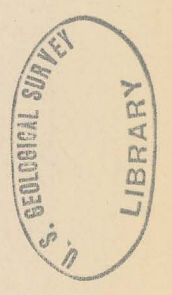
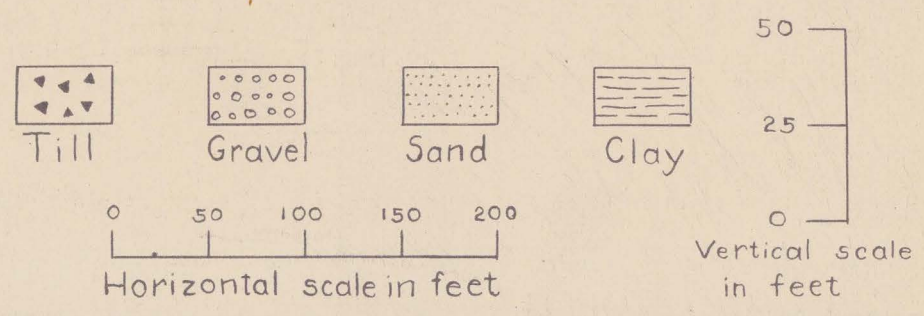


Figure 13.--Field sketches of fresh exposures in railroad cuts through drumlinoid hills in the ground moraine of the Riley Creek glaciation between Yanert and McKinley Park station, made in August, 1948. Note: sketches of west banks of cuts have been reversed so that north in each section is to the left. Direction of ice flow was from right to left. The straight line at the base of each cut is the railroad grade.