

(200)

R 290

no. 198

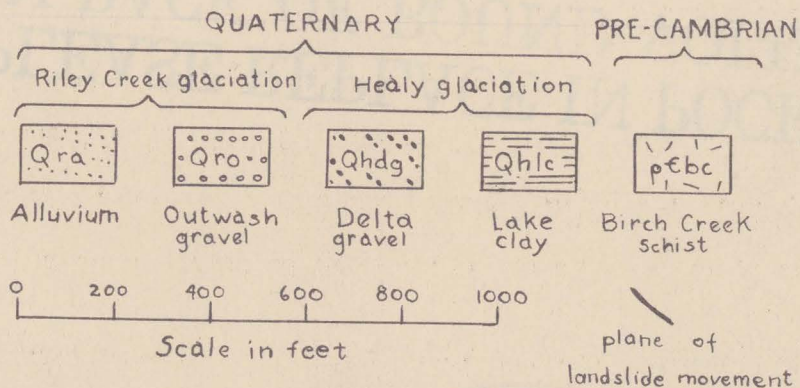
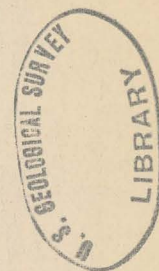
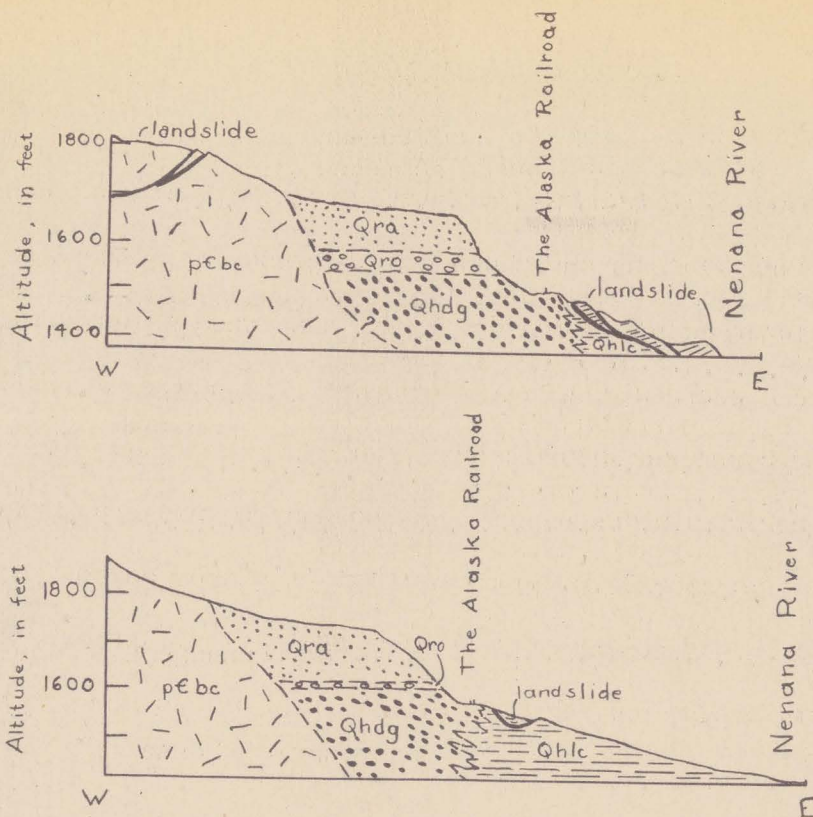


Figure 8.--Geologic cross-sections of delta deposits into Glacial Lake Moody, based on plane table surveys at 1:1,200.

a) Cross-section of bluff on north side of the mouth of Sheep Creek, mile 352.7 on the Alaska Railroad, showing outwash gravel and alluvium of the Riley Creek glaciation resting on the eroded surface of the delta gravel built by Sheep Creek into Glacial Lake Moody.

b) Cross-section of bluff on south side of mouth of creek at mile 351.4 on the Alaska Railroad, showing outwash gravel and alluvium of the Riley Creek glaciation resting on the eroded surface of gravel deposits built into Glacial Lake Moody.