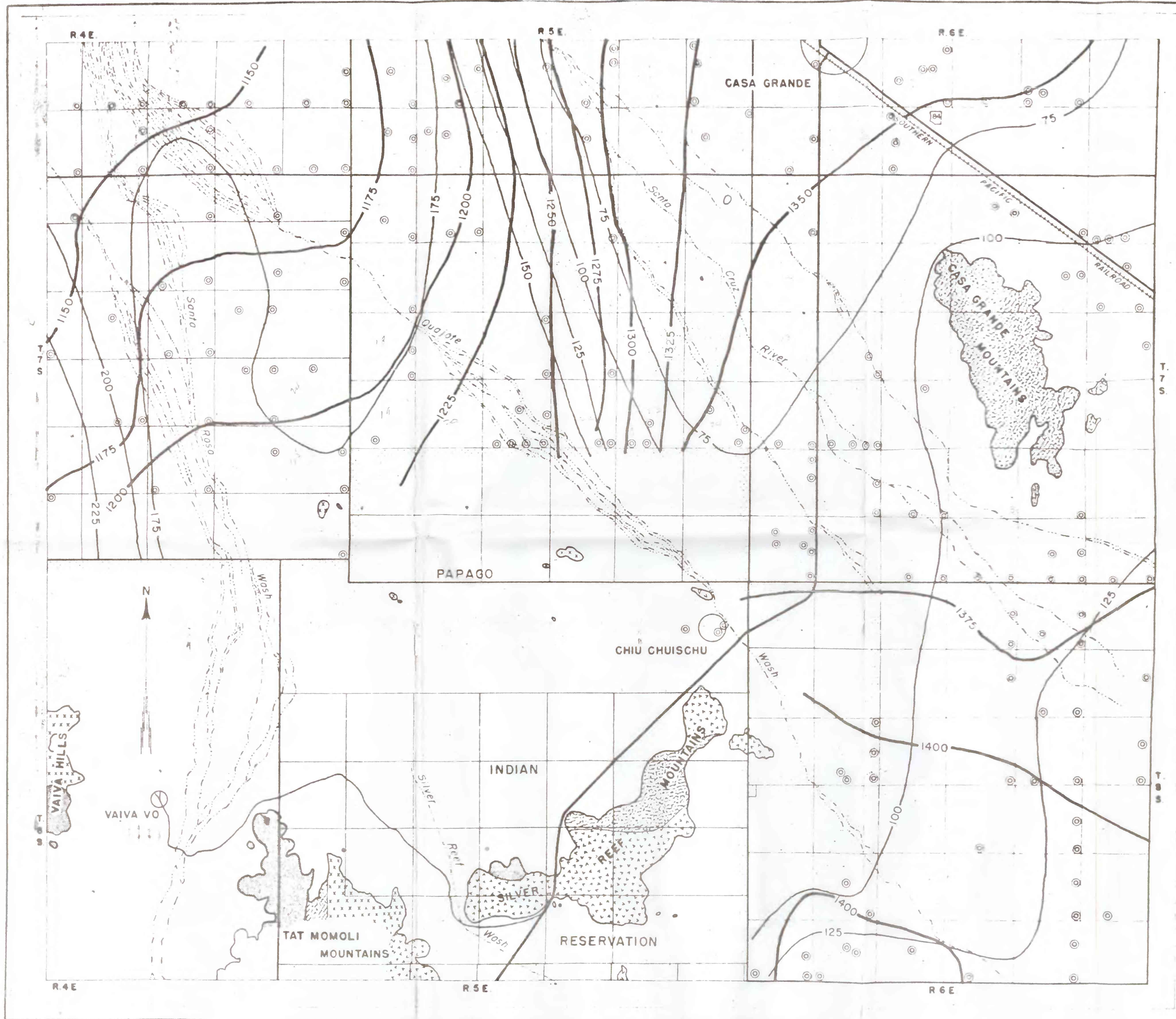










PROPERTY GROUND WATER DIVISION
U. S. GEOLOGICAL SURVEY
TUCSON, ARIZONA



MAP OF PART OF PAPAGO INDIAN RESERVATION AND ADJACENT AREAS,
SHOWING GEOLOGY, LOCATIONS OF WELLS, DEPTH
TO WATER, AND CONTOURS OF THE WATER TABLE
0 2 MILES

EXPLANATION

- 
 Basalt flows
 Essentially non-water-bearing in area.
- 
 Alluvial fill
 Gravel, sand, silt, and clay; includes recent alluvial fill along washes; principal aquifer in area.
- 
 Volcanic rocks
 Principally extrusive; essentially non-water-bearing in area.
- 
 Older sedimentary rocks
 Essentially non-water-bearing in area.
- 
 Crystalline rocks
 Essentially non-water-bearing in area.
- 
 Well
- 
 75
 Depth to water, in feet, spring of 1952
- 
 1350
 Elevation of contour of water table, spring of 1952

QUATERNARY
QUATERNARY and TERTIARY
TERTIARY or CRETACEOUS (?)
CENOZOIC or MESOZOIC
PALEOZOIC or YOUNGER
PRE-CAMERIAN or YOUNGER