

(200)
T67mm
no. 751

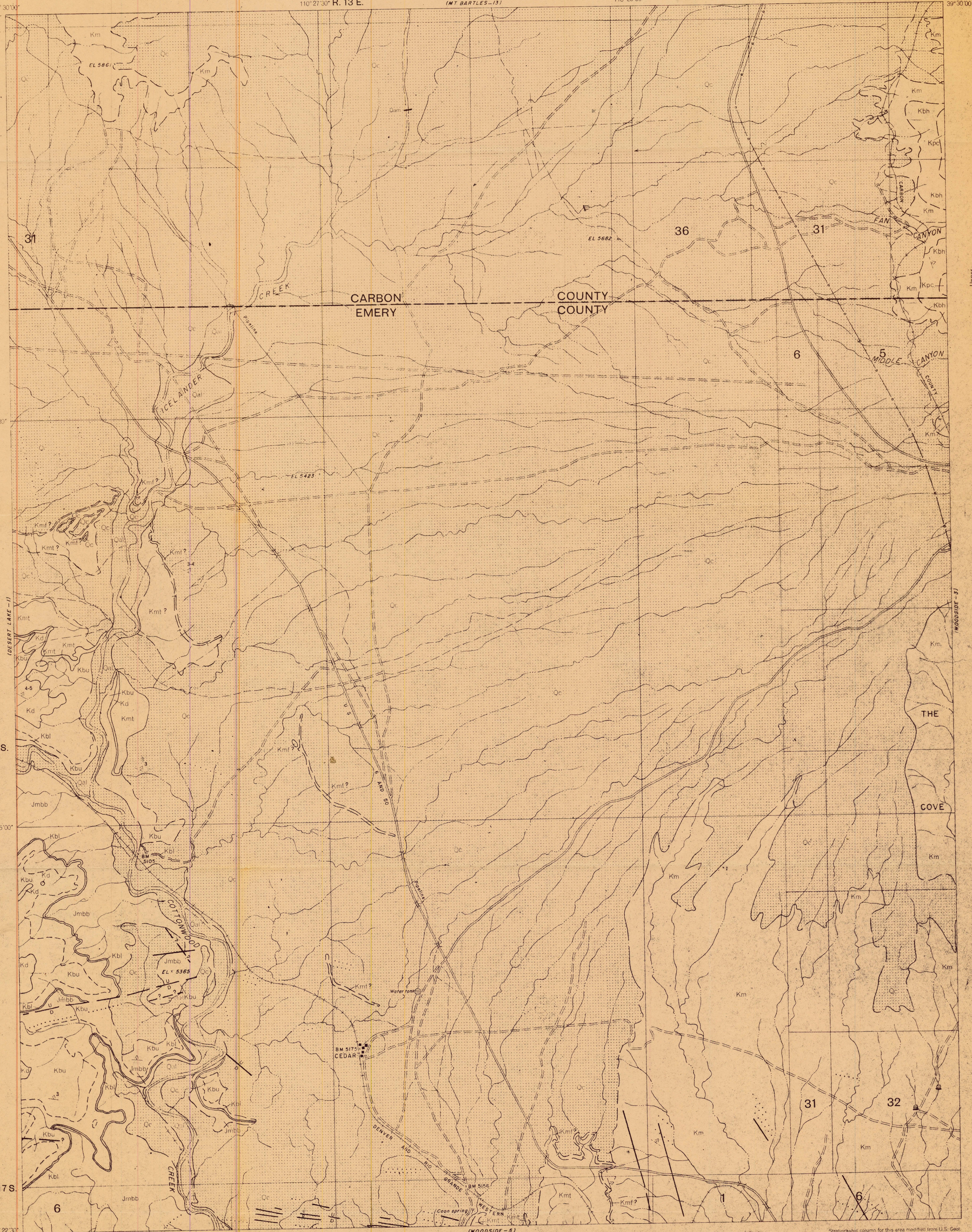
DEPARTMENT OF THE INTERIOR
U. S. GEOLOGICAL SURVEY

PREPARED IN COOPERATION WITH THE
ATOMIC ENERGY COMMISSION

PHOTOGEOLOGIC MAP, WOODSIDE-4
UTAH-EMERY AND CARBON COUNTIES

TRACE ELEMENTS MEMORANDUM REPORT 751
R. 14 E.

EXPLANATION



PLANIMETRY FROM U. S. GEOLOGICAL SURVEY
TOPOGRAPHIC MAP, WOODSIDE QUADRANGLE,
UTAH.

This map is preliminary and has not been
edited or reviewed for conformity with
U. S. Geological Survey standards and
nomenclature.

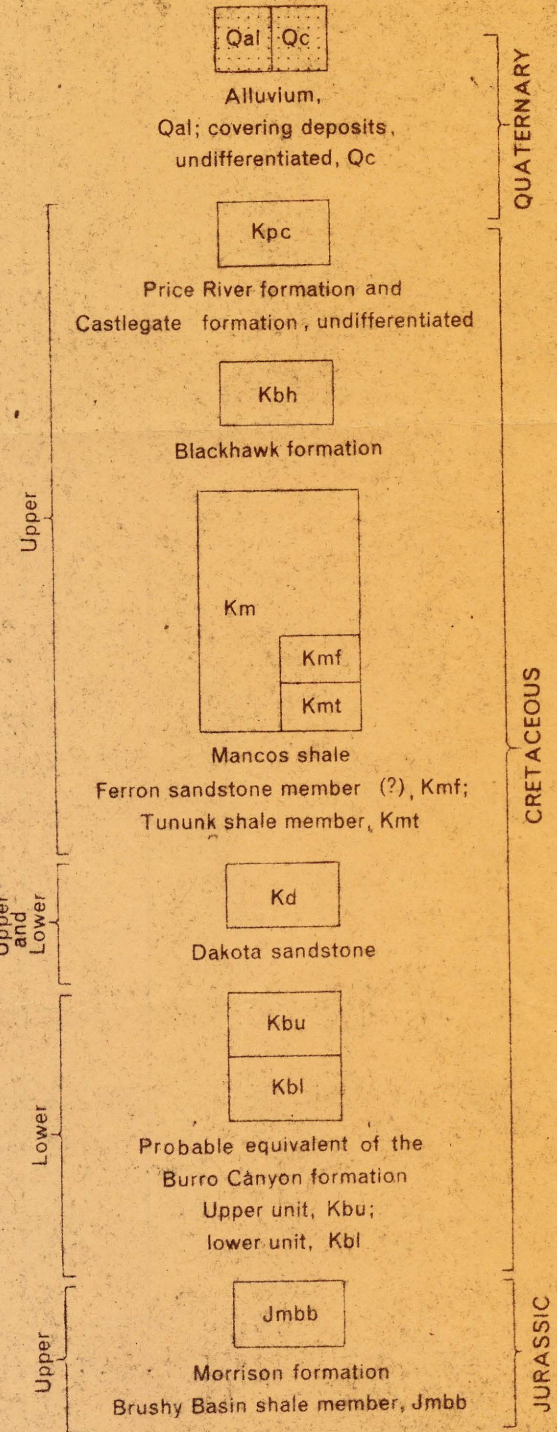
WOODSIDE
QUADRANGLE

PHOTOGEOLOGY BY V. M. HOSLEY
SCALE 1:24,000
FEBRUARY 1954

Roads as classified in this map series are as follows:
Primary roads are maintained and graded, travelable by
two-wheel-drive vehicles; secondary roads are travelable
possibly by two-wheel-drive vehicles; trails are not
travelable by four-wheel-drive vehicles, except locally.
When other information is lacking, roads are classified
by their appearance on aerial photographs.

Stratigraphic column for this area modified from U. S. Geol.
Survey Bull. 990, 1936 and Gas. Ind., Map CM 131, 1952.

Maps of this series have been compiled mainly from photo-
geologic data but have not been checked in the field, hence
they have not had the benefit of thorough validation with
respect to maps compiled entirely from field data.



Contact
Can be accurately located
within 30 feet horizontally

Contact
Can be approximately located
within 30 to 200 feet horizontally

Contact
Cannot be located accurately;
probable error greater than 200 feet

Probable or doubtful contact

Fault
Dashed where approximately located
U, upthrown side; D, downthrown side.

Probable or doubtful fault

Approximate strike and dip of beds
Based on photo-interpretation

Inferred strike and dip of beds
Based on photo-interpretation
of areas where bedding is obscure

Conspicuous resistant bed within
a formation
May be traceable only locally

Uninterpretable linear feature
on photograph
May be geologically significant

County boundary

Primary road Secondary road

Trail Power line

Abandoned railroad

Bench mark

Note: The lower unit of the probable equivalent of the
Burro Canyon formation is believed to be the Buckhorn
conglomerate of Stokes (Geol. Soc. America Bull.,
vol. 55, 1944); and the upper unit, the Cedar
Mountain shale of Stokes.
Names of members of the Mancos shale are based
on C. B. Hunt's Geologic Map of the Henry Mountains
Region, Utah, Map CM 131, 1952.

Utah (Woodside quad.) Geol. 1:24,000
cop. 1.

USGS LIBRARY - RESTON
3 1818 00360536 5

M(200)
R29a
no. 54-131
C. 1

