

55-39

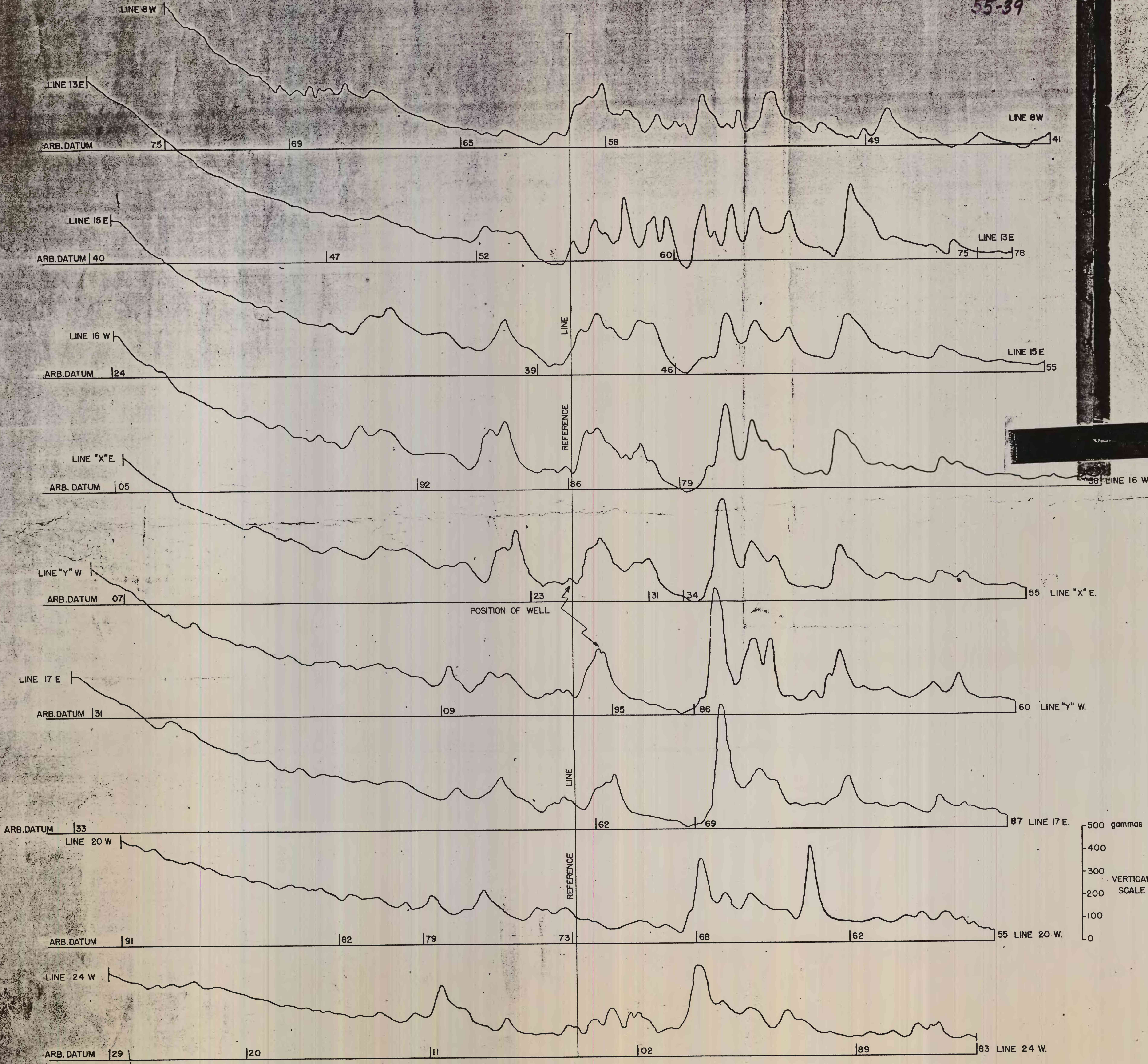
AEROMAGNETIC PROFILES OF THE ROCHESTER-BERWICK AREA,  
BERWICK AND ALTON QUADRANGLES,

NEW HAMPSHIRE AND MAINE

by H. J. Sneyers and others

A reconnaissance aeromagnetic survey was made by the U. S. Geological Survey in the vicinity of Rochester, New Hampshire during July, 1954, to delineate, if possible, the pyroclastic body postulated in drilling water wells about three miles north of Rochester. Twenty-one traverses each 22 miles long, were flown at 1/4 mile intervals in a northwest-southeast direction. Selected traverses obtained in this survey have been compiled as magnetic profiles.

These profiles show there is a definite magnetic pattern in the area. Sharp anomalies are continuous across the area and are parallel to the geologic grain. An irregular positive anomaly exists among the reported pyroclastic occurrences, but the same anomaly on the adjacent line is slightly east of the other reported occurrence. Anomalies in the area probably represent local lithologic changes rather than any high concentration of magnetic minerals, although it cannot be positively said that they are not associated directly or indirectly with pyroclastic mineralization.



AEROMAGNETIC PROFILES OF THE ROCHESTER - BERWICK AREA,  
BERWICK AND ALTON QUADRANGLES, NEW HAMPSHIRE AND MAINE

