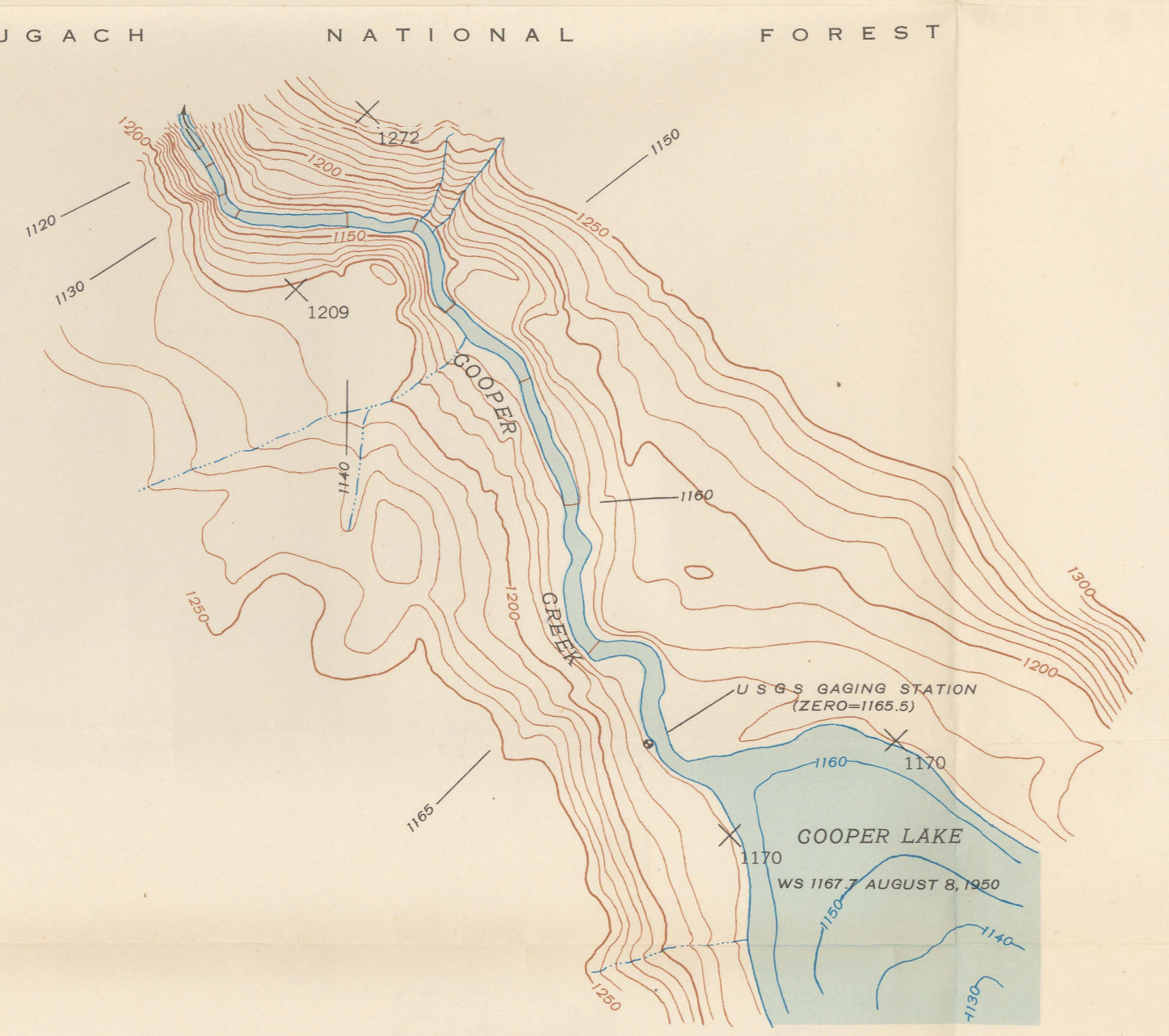
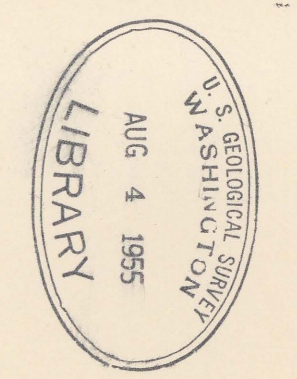


UNITED STATES  
DEPARTMENT OF THE INTERIOR  
GEOLOGICAL SURVEY

PLAN  
COOPER LAKE, ALASKA  
DAM SITE



Topography by Gordon C. Giles  
Surveyed in 1950

TRUE NORTH  
26 1/2°  
MAGNETIC NORTH

APPROXIMATE MEAN  
DECLINATION 1950

Subject to adjustment  
All crosses (X) are plane table bench marks  
One plan sheet with dam site

COOPER LAKE,  
ALASKA  
Printed in 1951  
ONE SHEET