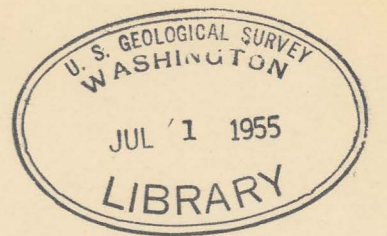

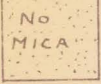
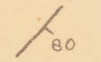


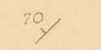
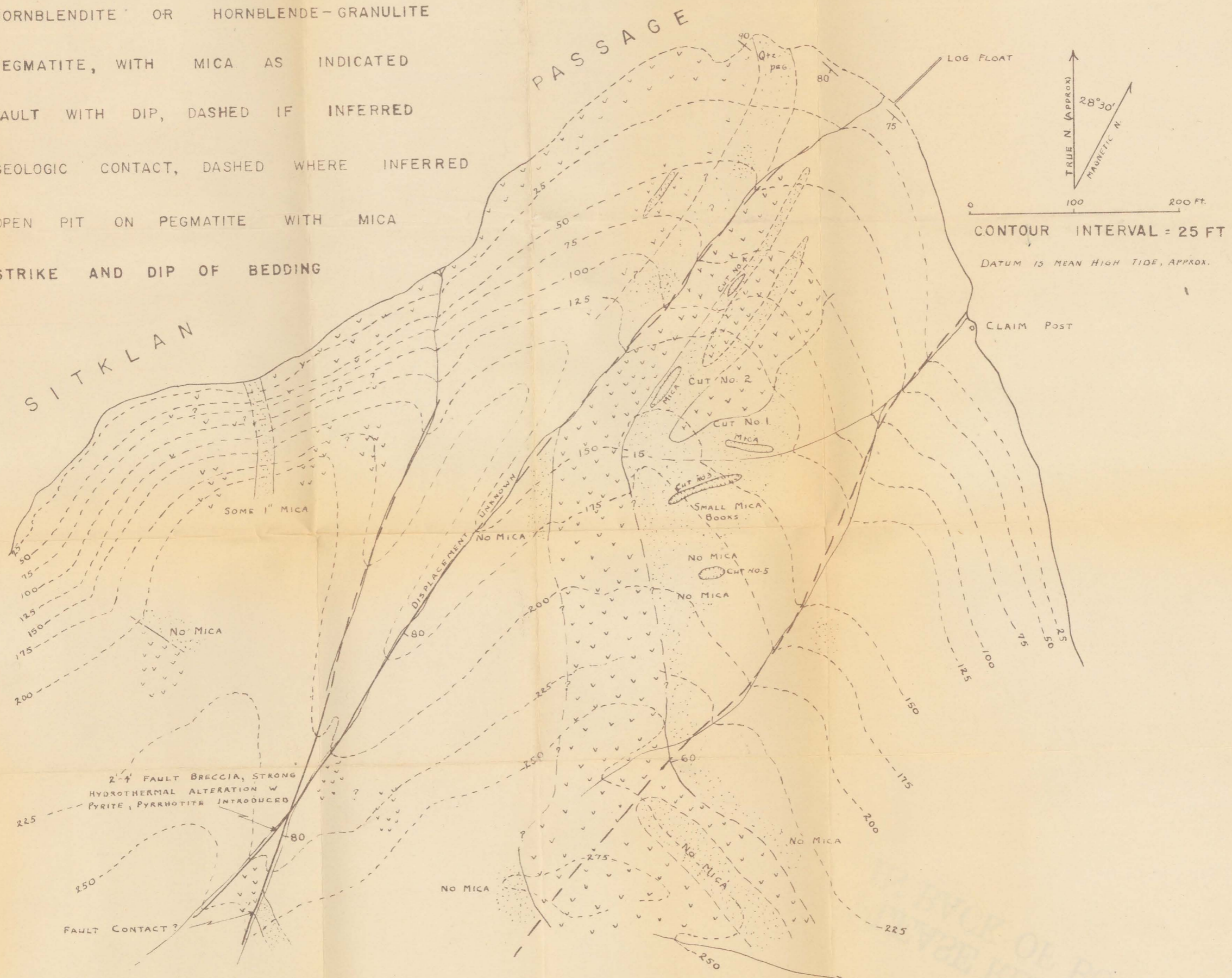


(200)
R290
no.331



EXPLANATION

-  HORNBLENDITE OR HORNBLLENDE-GRANULITE
-  PEGMATITE, WITH MICA AS INDICATED
-  FAULT WITH DIP, DASHED IF INFERRED
-  GEOLOGIC CONTACT, DASHED WHERE INFERRED
-  OPEN PIT ON PEGMATITE WITH MICA
-  STRIKE AND DIP OF BEDDING



CONTROL BY TAPE-BRUNTON TRAVERSE

GEOLOGY AND TOPOGRAPHY BY C. L. SAINSBURY, 1953-54

This report is preliminary and has not been edited or reviewed for conformity with U. S. Geological Survey standards and nomenclature.

GEOLOGIC SKETCH MAP OF PEGMATITE DEPOSITS
AT SITKLAN ISLAND, ALASKA