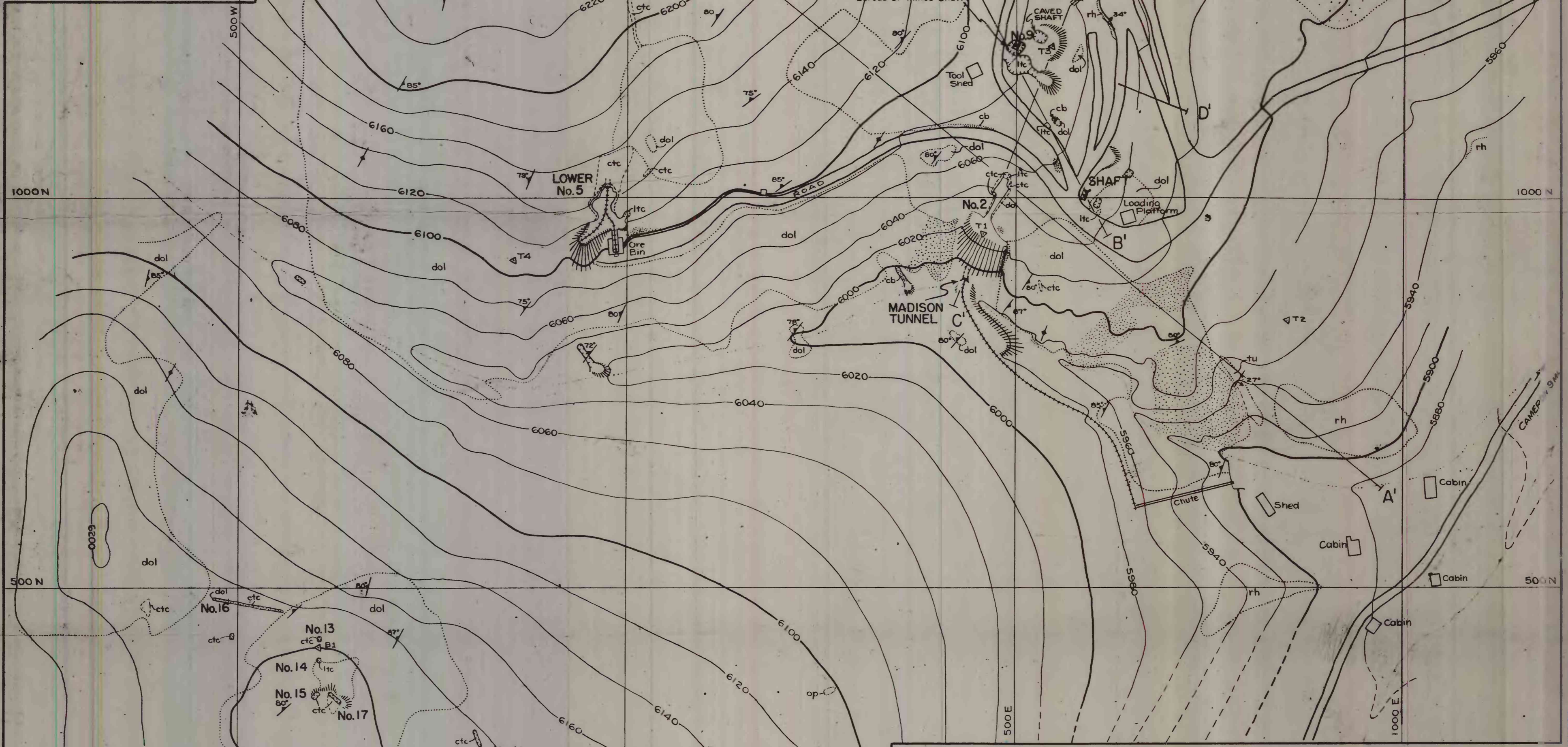
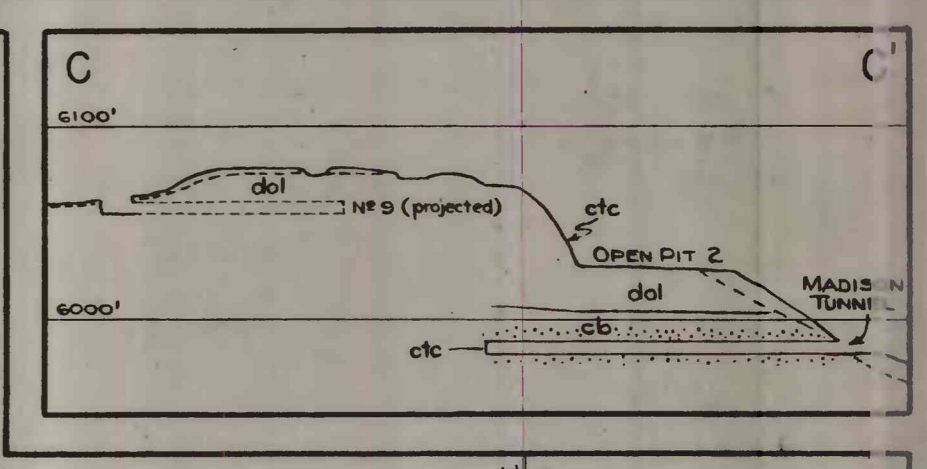
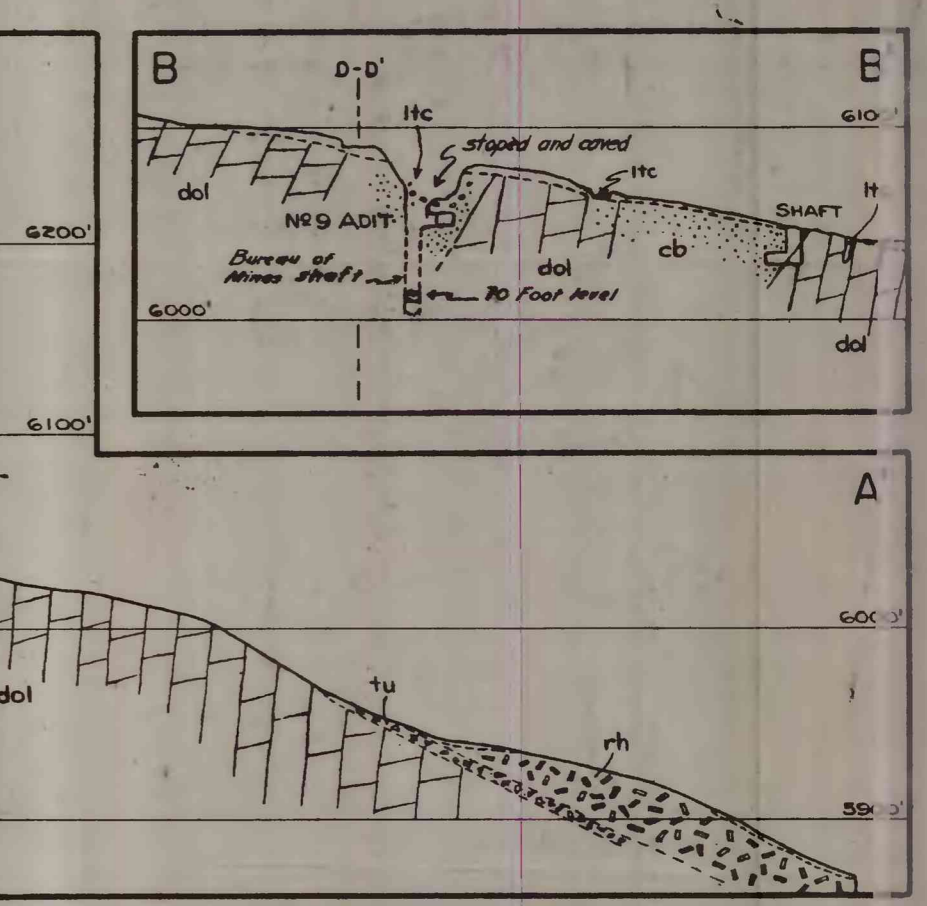
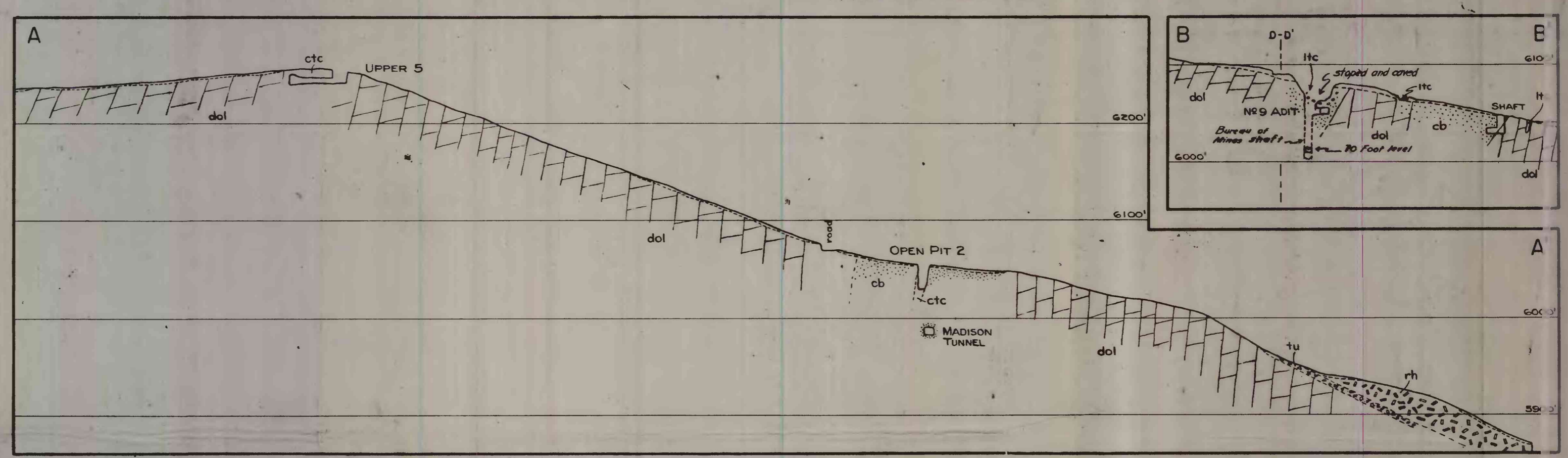
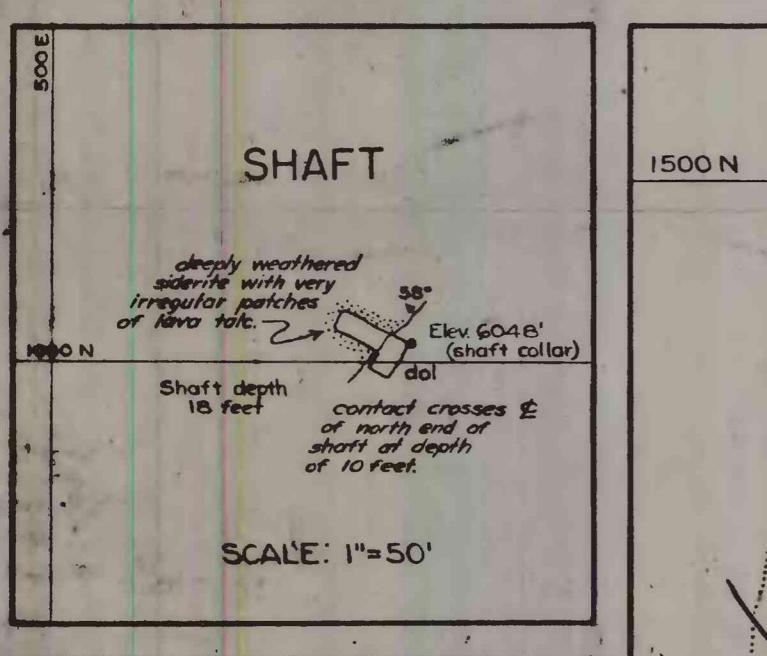
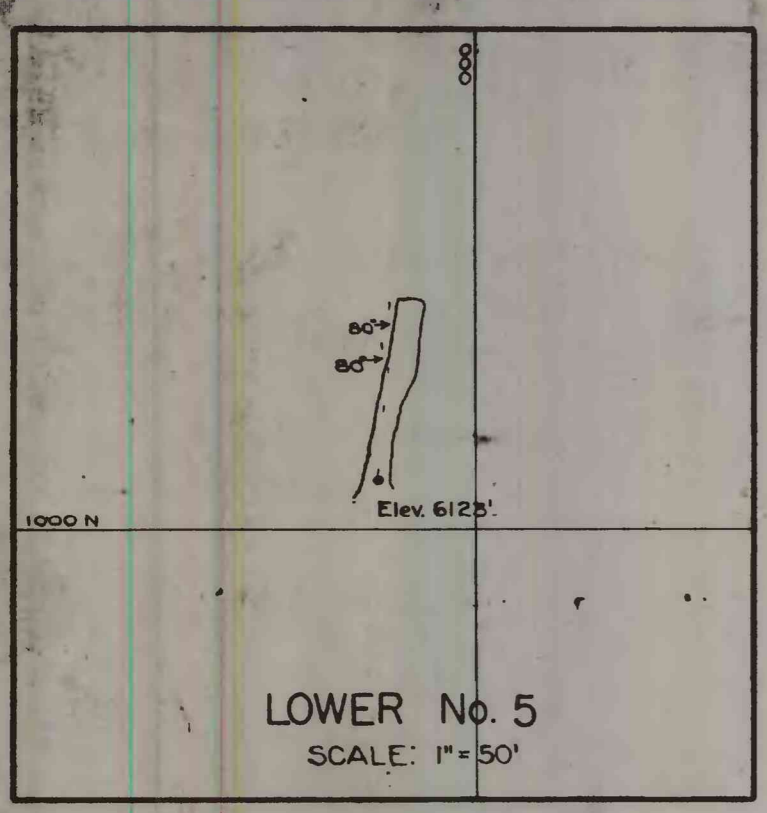
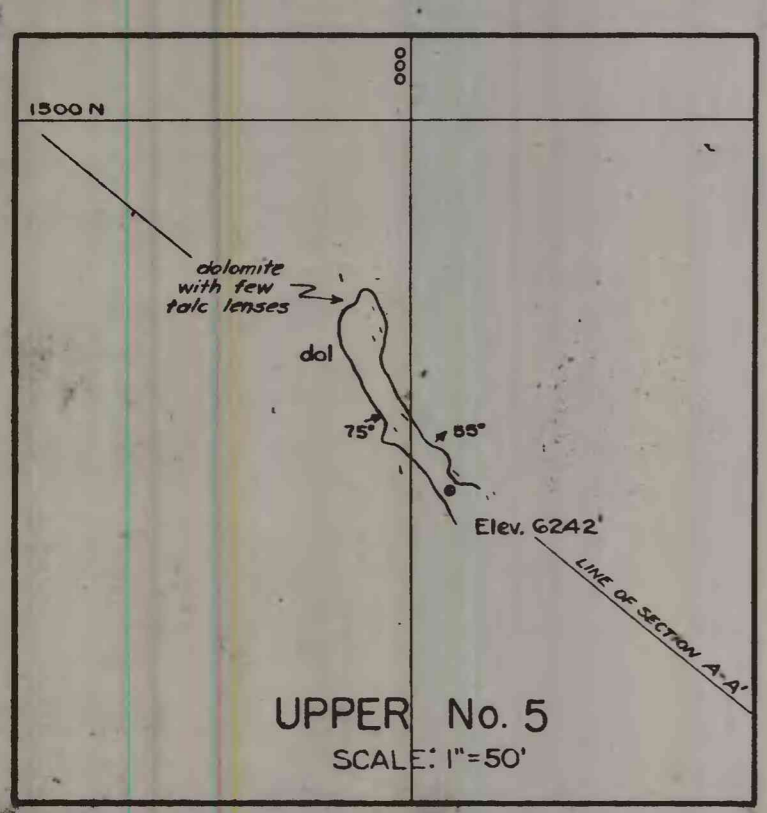


U. S. Geological Survey
OPEN FILE REPORT
This map or illustration is preliminary
and has not been edited or reviewed for
conformity with Geological Survey
standards or nomenclature.



EXPLANATION

rh	RHYOLITE Quartz phenocrysts in fine grained, reddish groundmass.
tu	RHYOLITE TUFF Light weight, buff colored, fragmental rock.
op	OPALINE SILICA Dull, yellow to orange rock. Apparently hydrothermal alteration of dolomite.
dol	DOLOMITE Grey, fine-grained rock, weathering to a brown friable surface.
cb	CARBONATE ROCK Hydrothermal alteration and replacement of dolomite.
lrc	TALC lrc: cream colored, opaque talc suitable for "lava" use.
ctc	ctc: greenish, translucent talc of ceratic grade.
↗	Attitude of banding in dolomite. Possibly bedding.
○	Outline of outcrop
—	Fault

