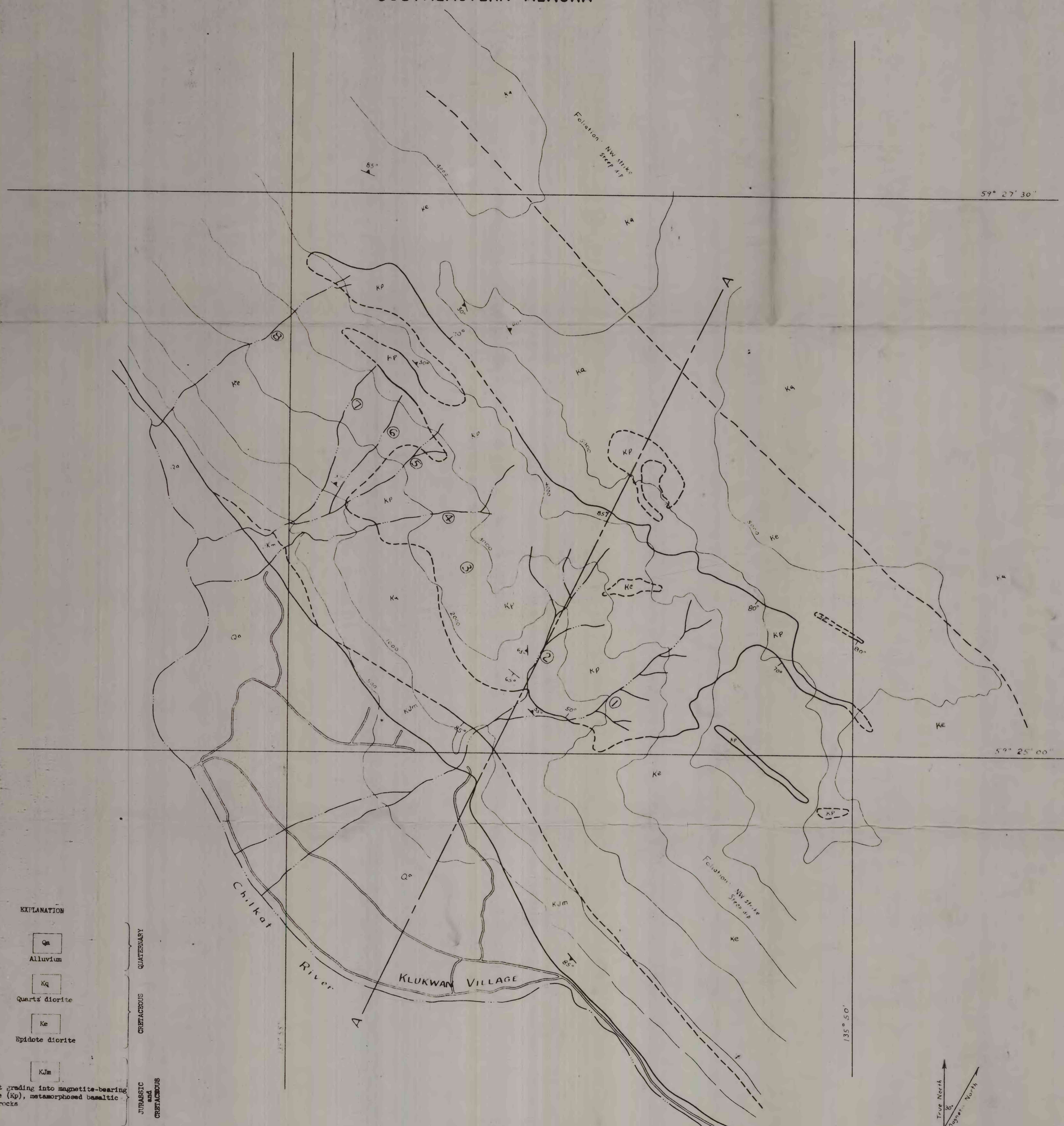
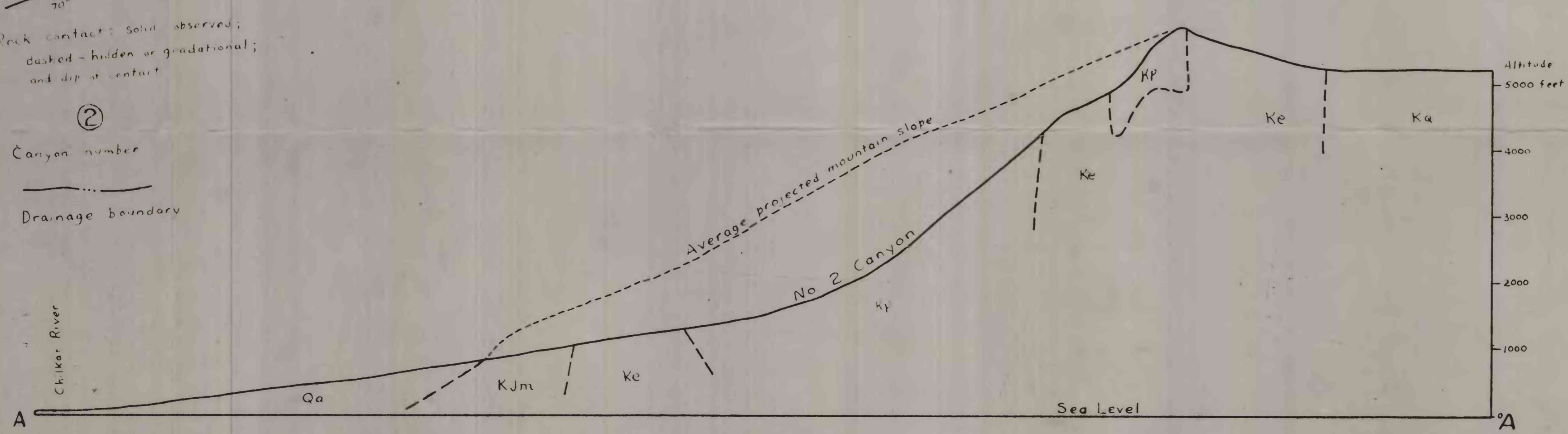
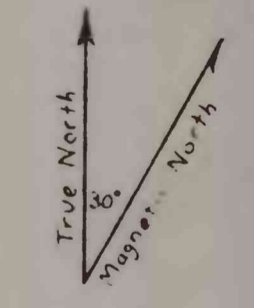
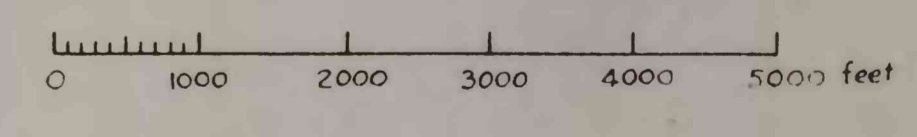


# FIGURE 3 GEOLOGIC MAP OF THE KLUKWAN IRON DEPOSIT SOUTHEASTERN ALASKA



- EXPLANATION**
- Qa Alluvium
  - Kq Quartz diorite
  - Ke Epidote diorite
  - Kjm Metasalt grading into magnetite-bearing pyroxenite (Kp), metamorphosed basaltic volcanic rocks
- Structure Symbols**
- Bedding and dip of bedding or layering
  - Strike and dip of foliation
  - Rock contacts: solid - observed; dashed - hidden or gradual; and dip at contact
  - 2 Canyon number
  - Drainage boundary



CROSS SECTION A-A

This map is preliminary and has not been edited or revised for conformity with U.S. Geological Survey standards and nomenclature.