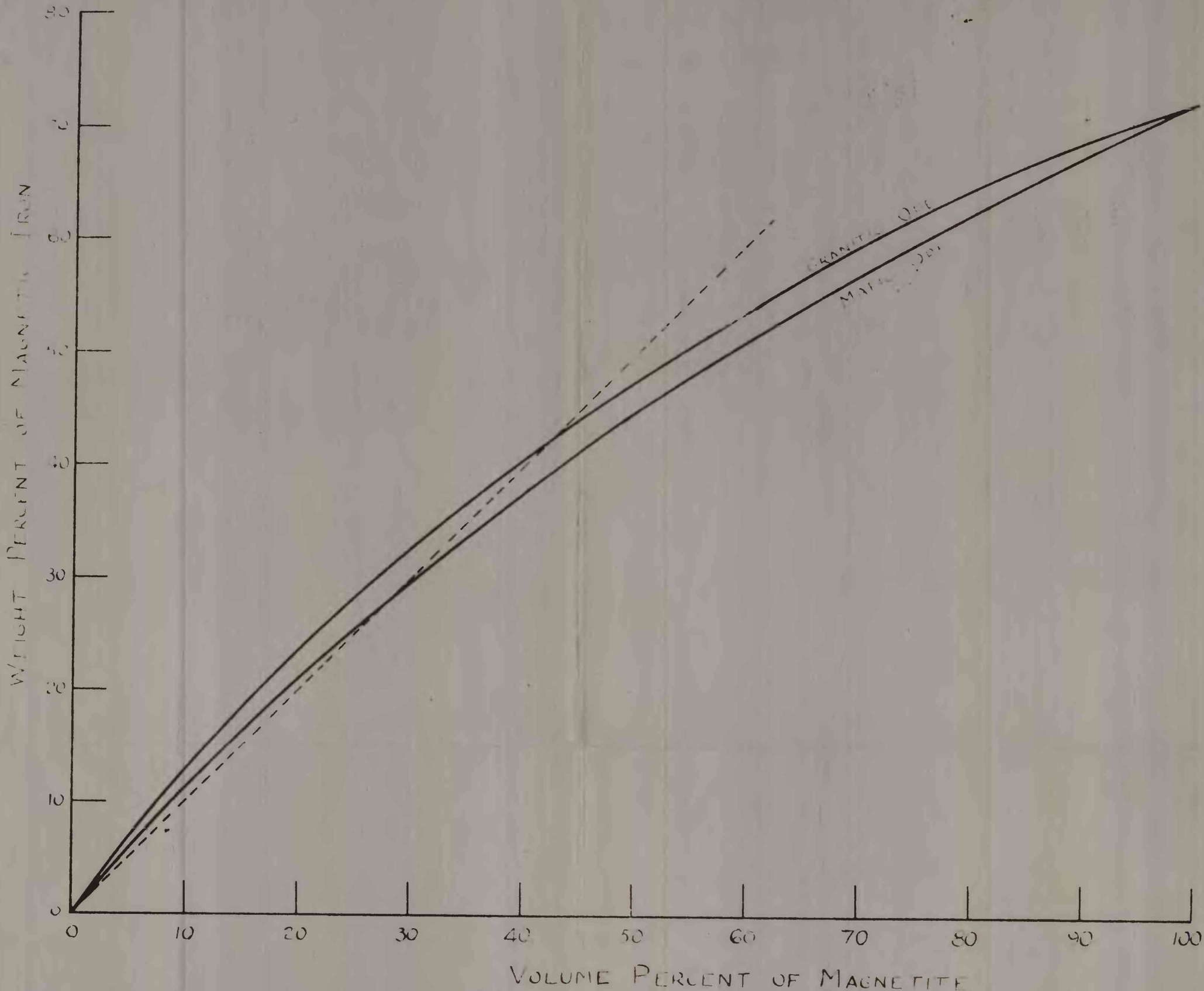


FIGURE 4

GRAPH FOR ESTIMATING WEIGHT PERCENTAGE OF MAGNETIC IRON FROM VOLUME PERCENTAGE MAGNETITE IN MAFIC AND FELSIC ORES



NOTE : Density of gangue in granitic ore = 2.7 gm/cm³
" " " " mafic " = 3.2

This map is preliminary and has not been edited or reviewed for conformity with U. S. Geological Survey standards and nomenclature.