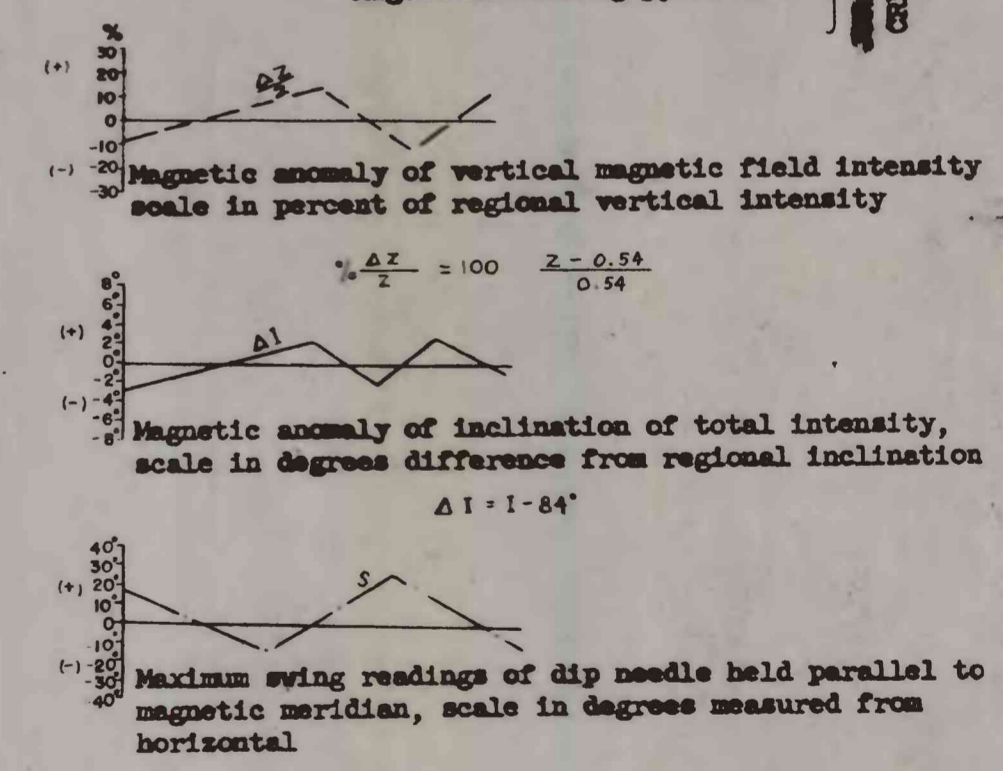
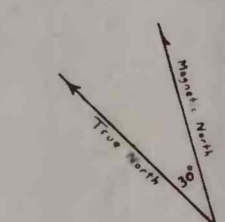
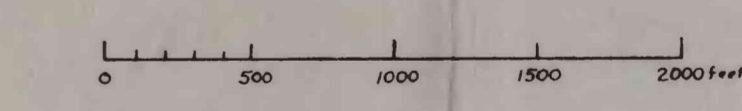
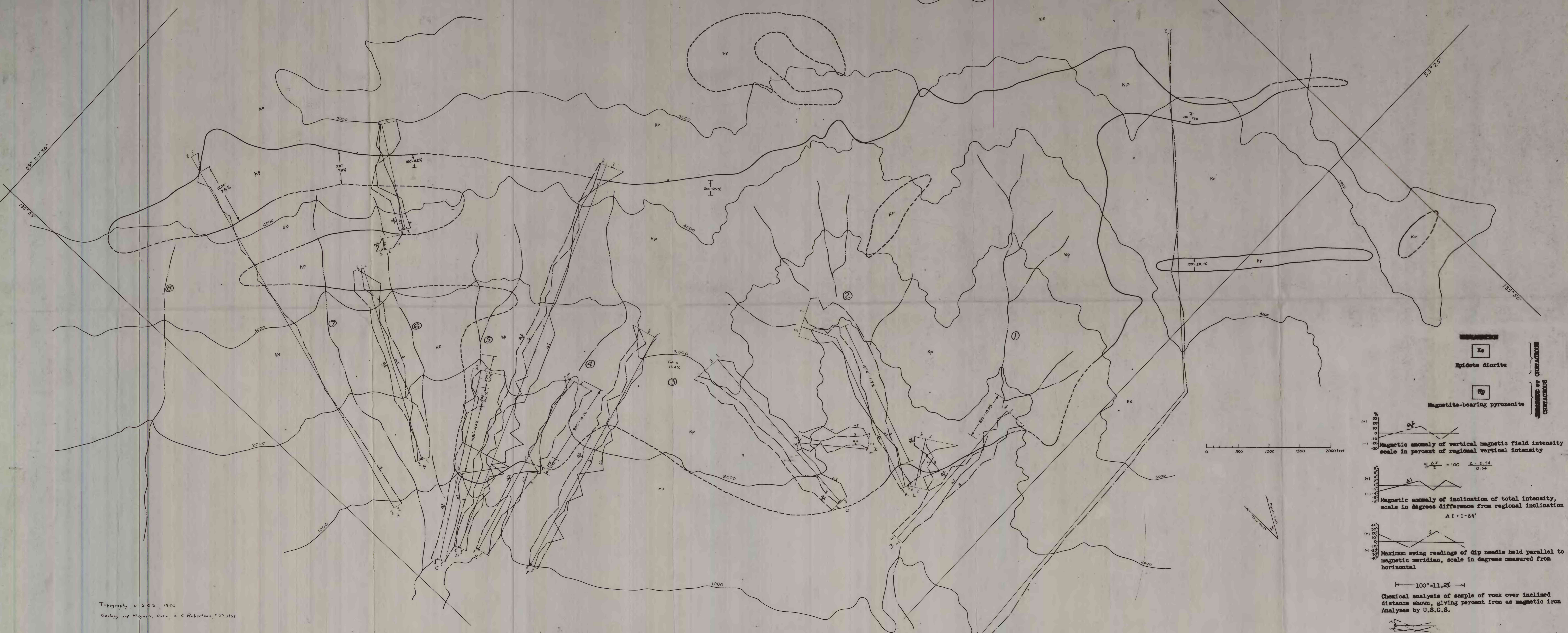


U.S. DEPT. OF INTERIOR
GEOLOGICAL SURVEY

FIGURE 5
MAGNETIC ANOMALIES FROM DIP NEEDLE TRAVERSES AND
CHEMICAL ANALYSIS AVERAGES FROM SAMPLE TRAVERSES
KLUKWAN MAGNETITE DEPOSIT
SOUTHEASTERN ALASKA



Chemical analysis of sample of rock over inclined distance shown, giving percent iron as magnetic iron Analyses by U.S.G.S.

Location of traverse B; dotted line is anomaly of (local-regional) direction of horizontal magnetisation, plotted as an angle from line of traverse, West, East

Outline of pyroxenite body Canyon number Drainage

This map is preliminary and has not been edited or reviewed for conformity with U.S. Geological Survey standards and nomenclature.

Topography, U.S.G.S., 1950
Geology and Magnetic Data, E.C. Robertson, 1950, 1951