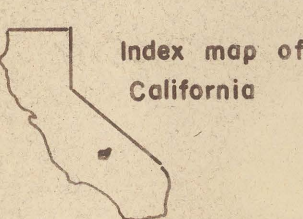
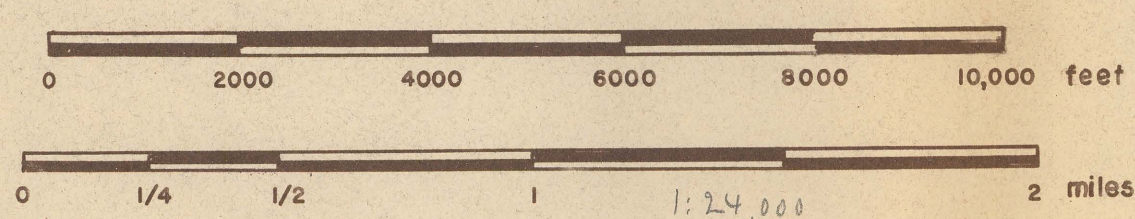


1200  
1200  
U. S. GEOLOGICAL SURVEY

# GEOLOGY OF THE LAVA MOUNTAINS SAN BERNARDINO COUNTY, CALIFORNIA

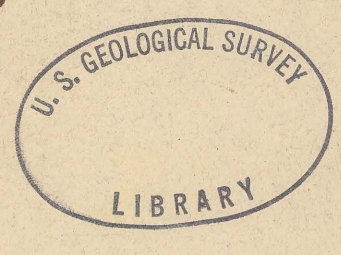
PLEASE REPLACE IN POCKET  
IN BACK OF BOUND VOLUME

1956

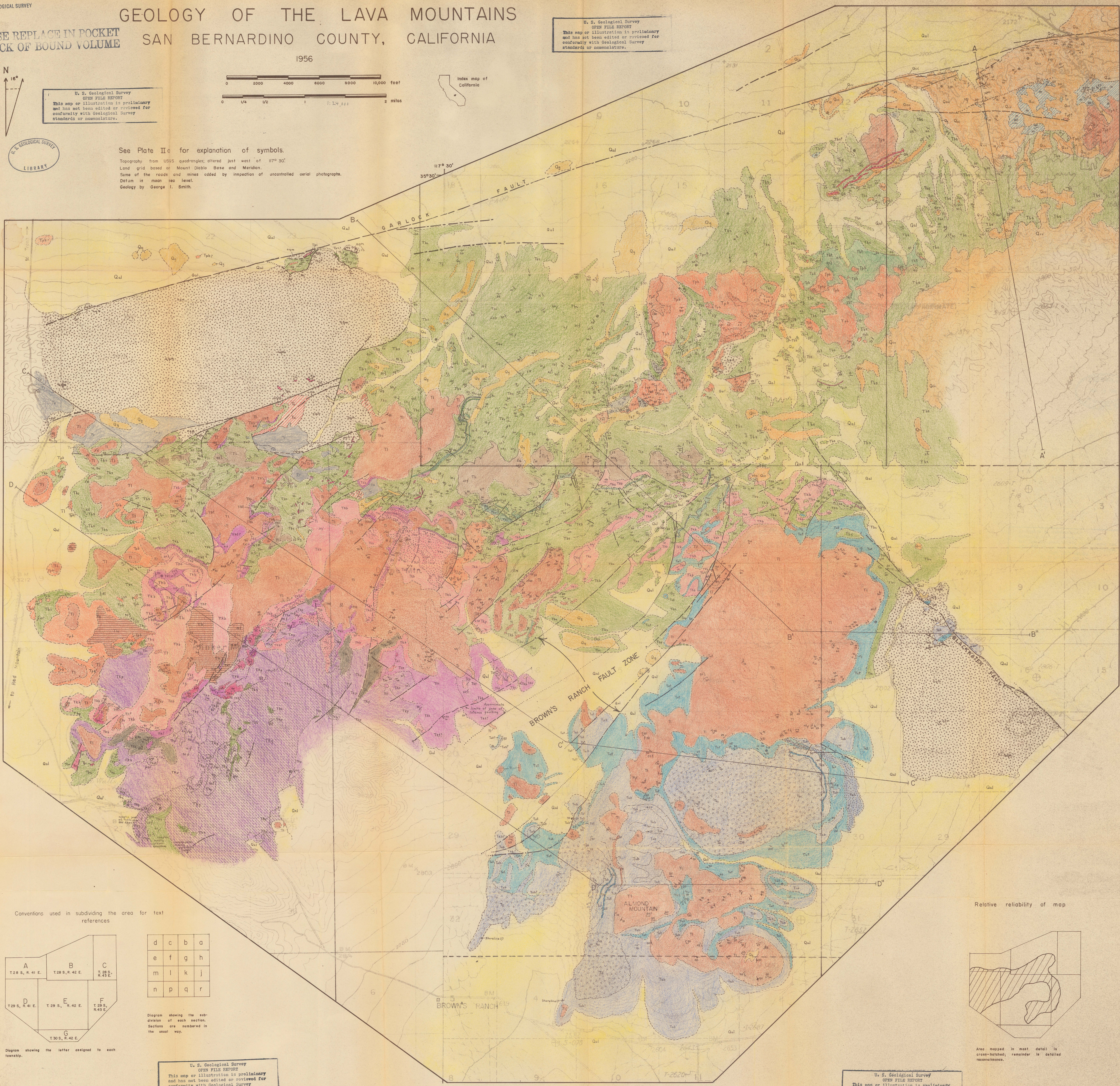


U. S. Geological Survey  
OPEN FILE REPORT  
This map or illustration is preliminary  
and has not been edited or reviewed for  
conformity with Geological Survey  
standards or nomenclature.

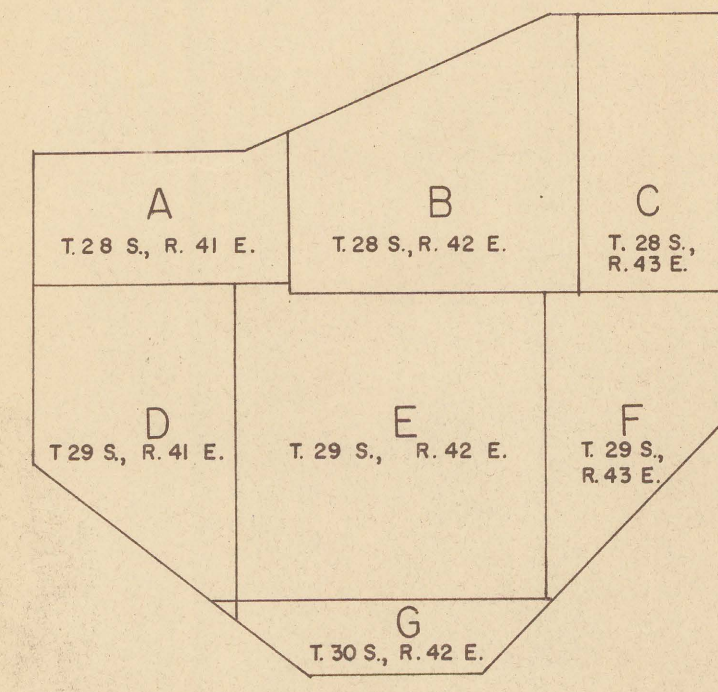
U. S. Geological Survey  
OPEN FILE REPORT  
This map or illustration is preliminary  
and has not been edited or reviewed for  
conformity with Geological Survey  
standards or nomenclature.



See Plate IIa for explanation of symbols.  
Topography from USGS quadrangles; altered just west of 117° 30'.  
Land grid based on Mount Diablo Base and Meridian.  
Some of the roads and mines coded by inspection of uncontrolled aerial photographs.  
Datum is mean sea level.  
Geology by George I. Smith.



Conventions used in subdividing the area for text references

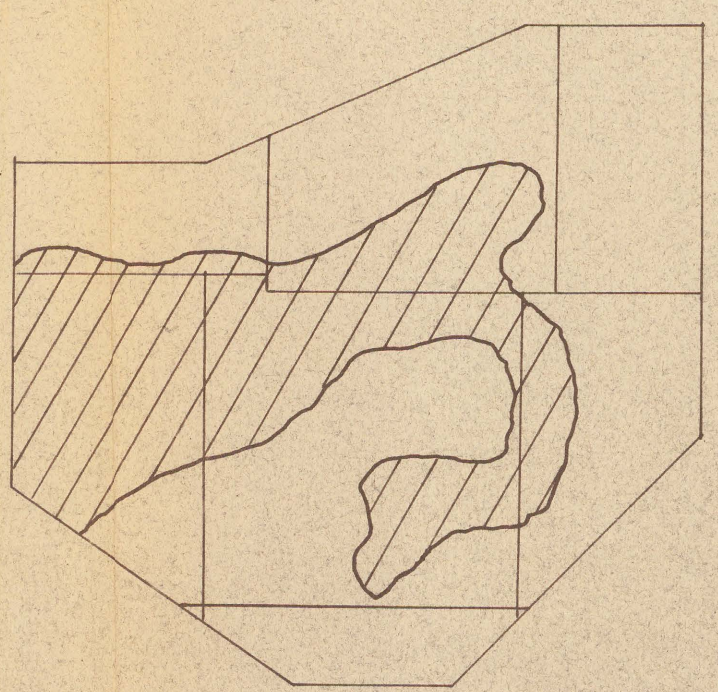


d	c	b	a
e	f	g	h
m	l	k	j
n	p	q	r

Diagram showing the subdivision of each section. Sections are numbered in the usual way.

U. S. Geological Survey  
OPEN FILE REPORT  
This map or illustration is preliminary  
and has not been edited or reviewed for  
conformity with Geological Survey  
standards or nomenclature.

Relative reliability of map



Area mapped in most detail is cross-hatched; remainder is detailed reconnaissance.

U. S. Geological Survey  
OPEN FILE REPORT  
This map or illustration is preliminary  
and has not been edited or reviewed for  
conformity with Geological Survey  
standards or nomenclature.