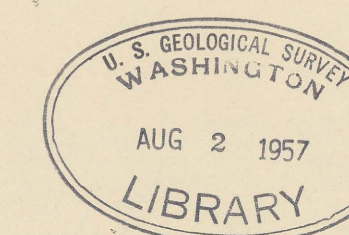
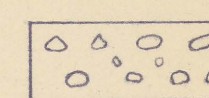


PLEASE REPLACE IN POCKET  
IN BACK OF BOUND VOLUME

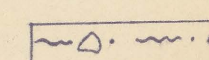


(200)  
R.290  
no.421

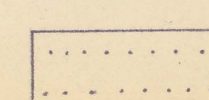
EXPLANATION



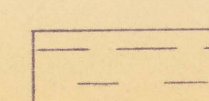
Conglomerate



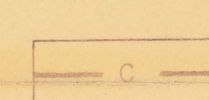
"Conglomeratic" sandy mudstone



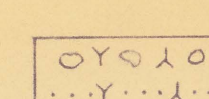
Sandstone



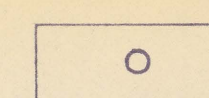
Siltstone or shale



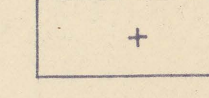
Coal



Buff, volcanic breccia,  
or tuffaceous sandstone

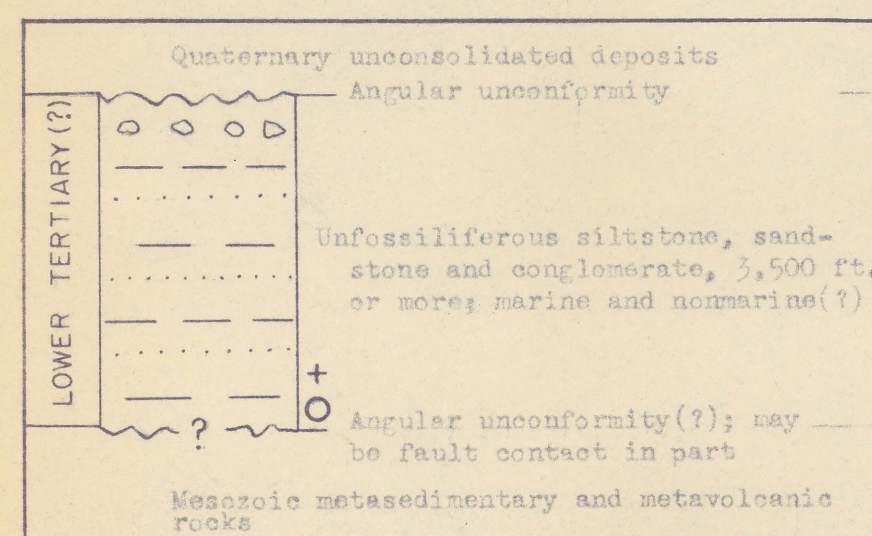


Approximate stratigraphic position  
of oil seep, show of oil in well,  
or petroliferous rock

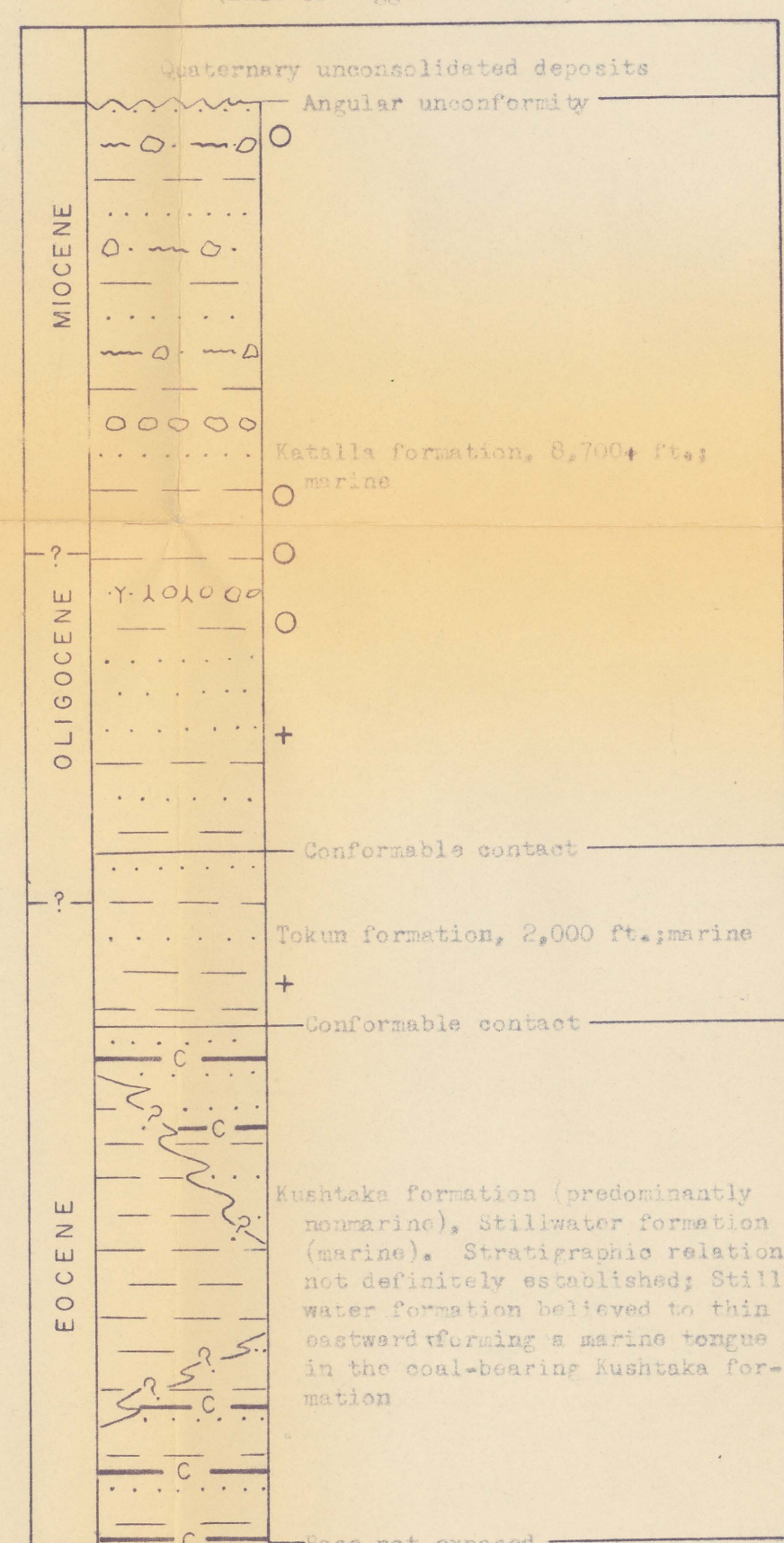


Approximate stratigraphic position  
of gas seep or show of gas in well

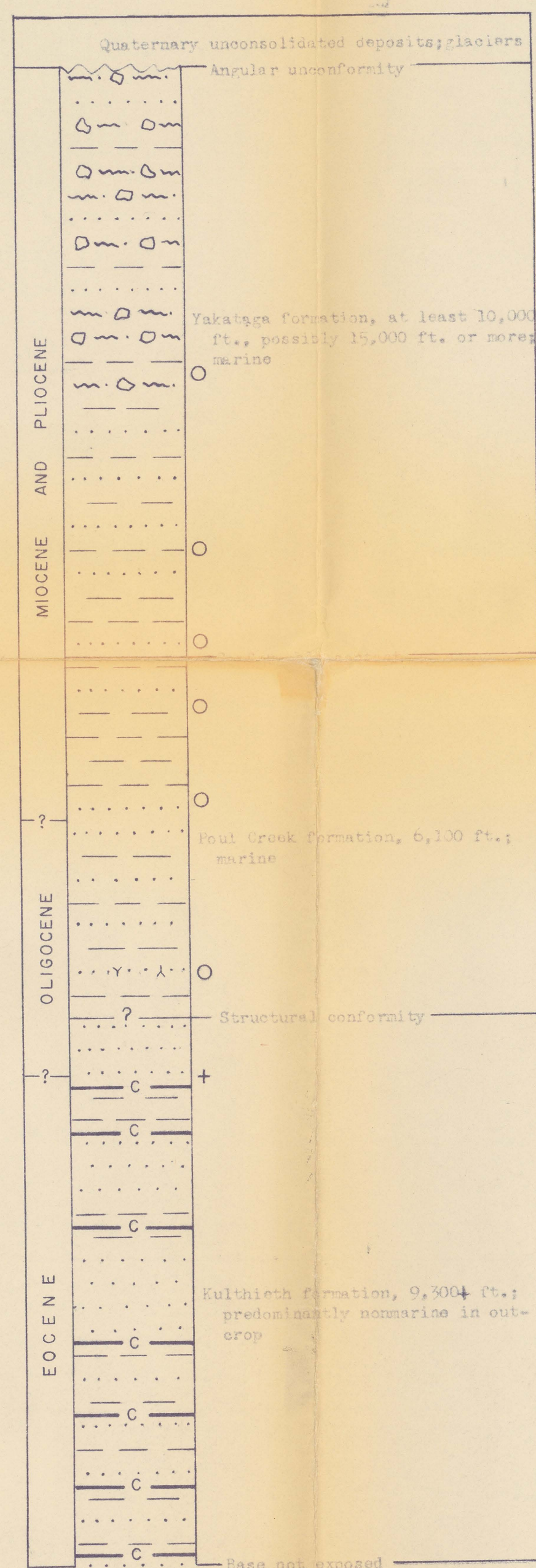
KATALA DISTRICT  
(West of Ragged Mountain)



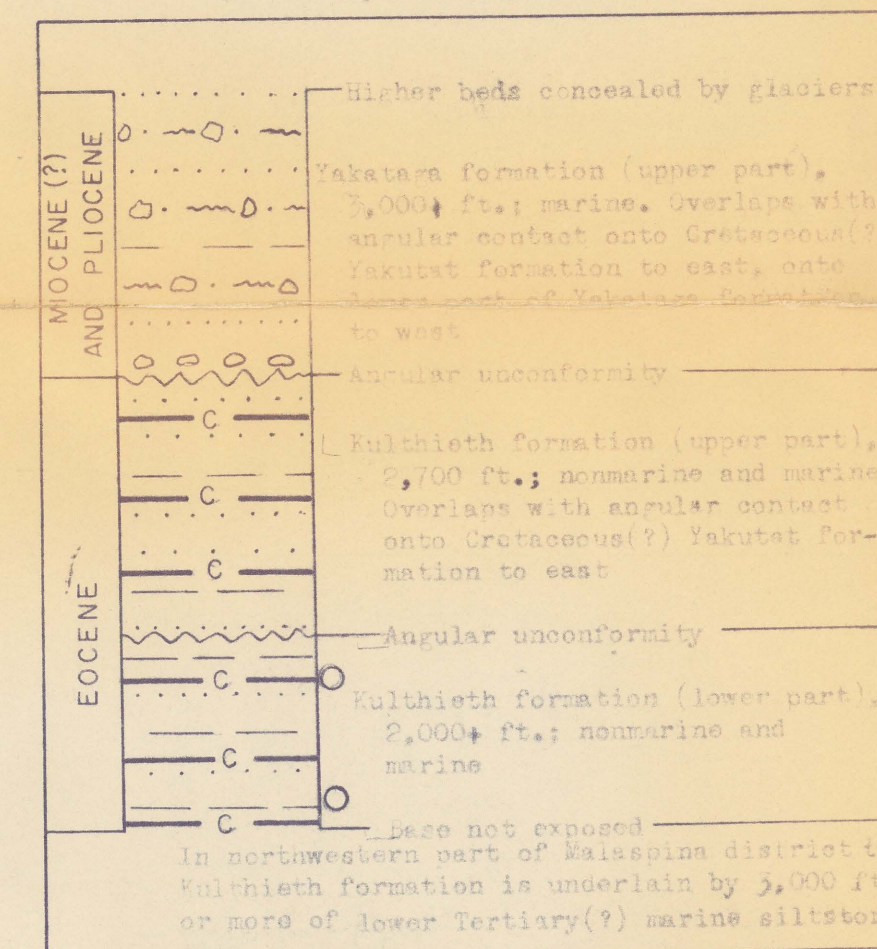
KATALA DISTRICT  
(East of Ragged Mountain)



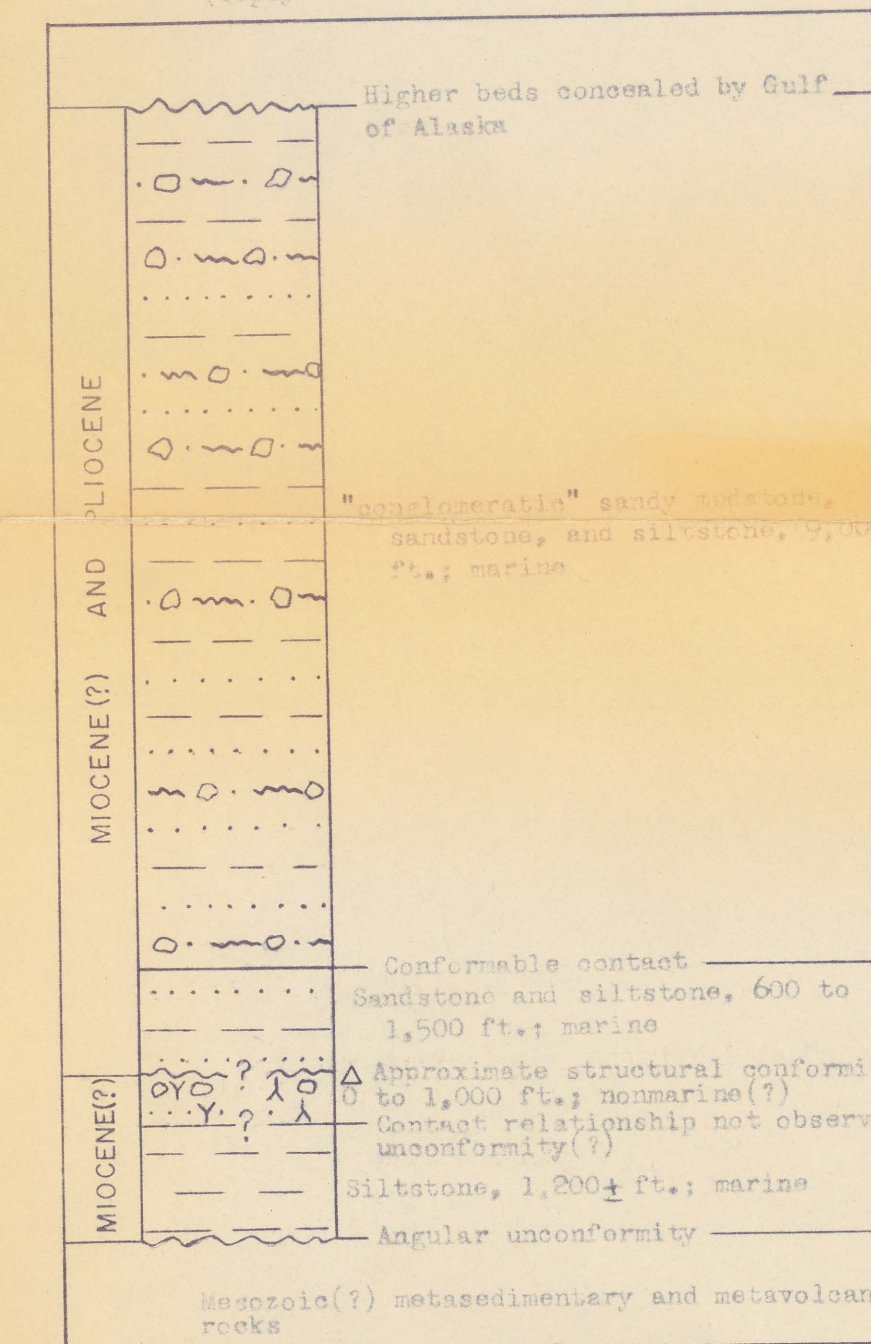
YAKATAGA DISTRICT



MALASPINA DISTRICT  
(Western part of Sannovar Hills)



LITUYA DISTRICT  
(Topsy Creek to LaPerouse Glacier)



REPRESENTATIVE STRATIGRAPHIC SECTIONS OF THE TERTIARY SEQUENCE EXPOSED IN THE GULF OF ALASKA TERTIARY PROVINCE, SOUTHERN ALASKA.