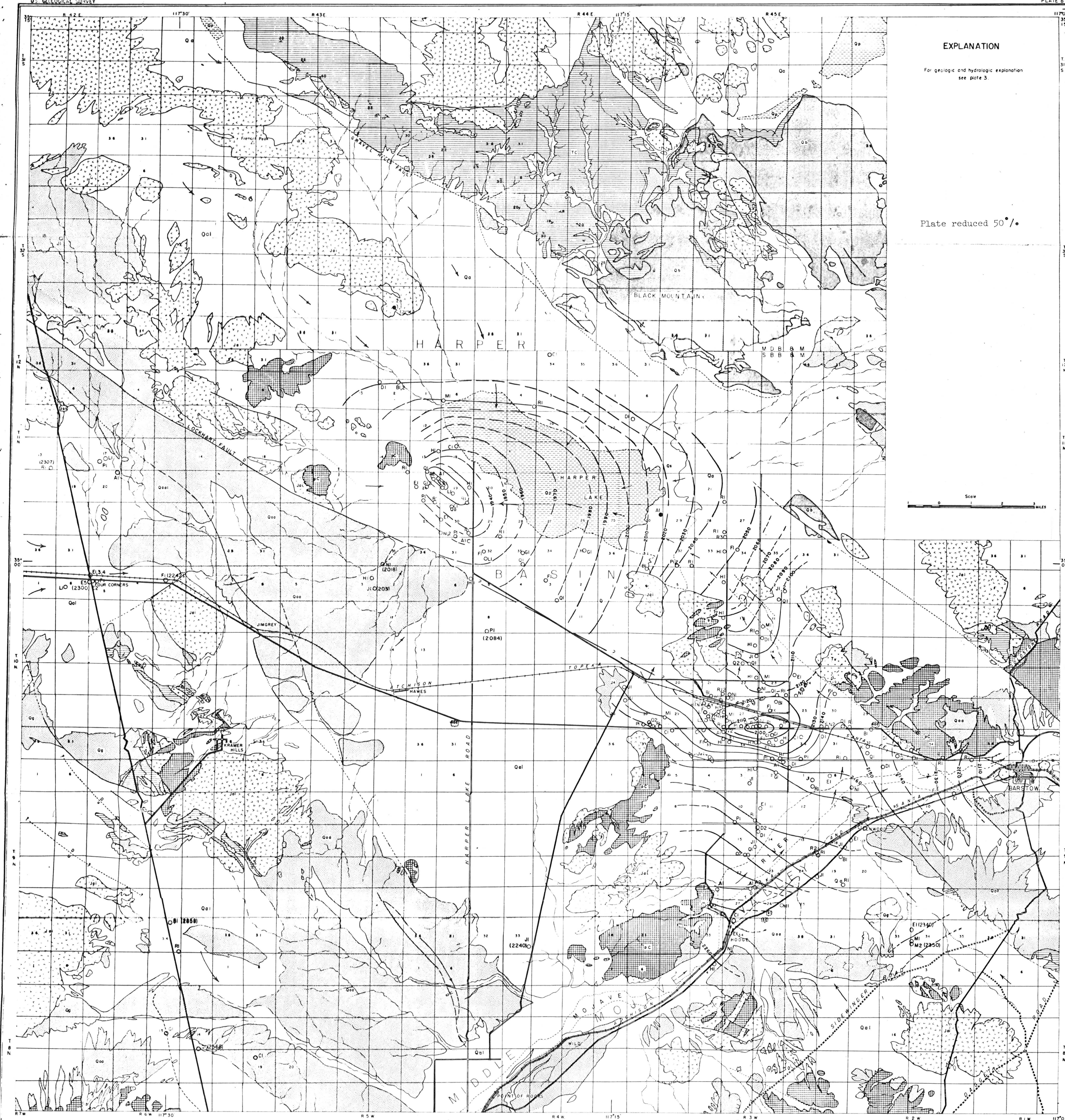


EXPLANATION

For geologic and hydrologic explanation see plate 5.

Plate reduced 50%.



Base chiefly from U.S. Geological Survey Barstow and Kramer quadrangles and from AMS photos.

MAP OF HARPER VALLEY AND THE MIDDLE MOJAVE VALLEY, CALIFORNIA  
SHOWING GEOLOGY, LOCATIONS OF WELLS, WATER-LEVEL CONTOURS, AND ALTITUDES OF WATER SURFACE IN 1953-54

Geology generalized by W.S. Stone from unpublished map by T.W. Dobbie, Jr.