

European terminology

American terminology

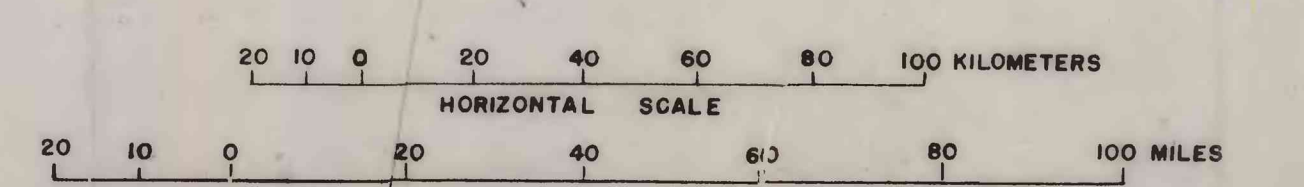
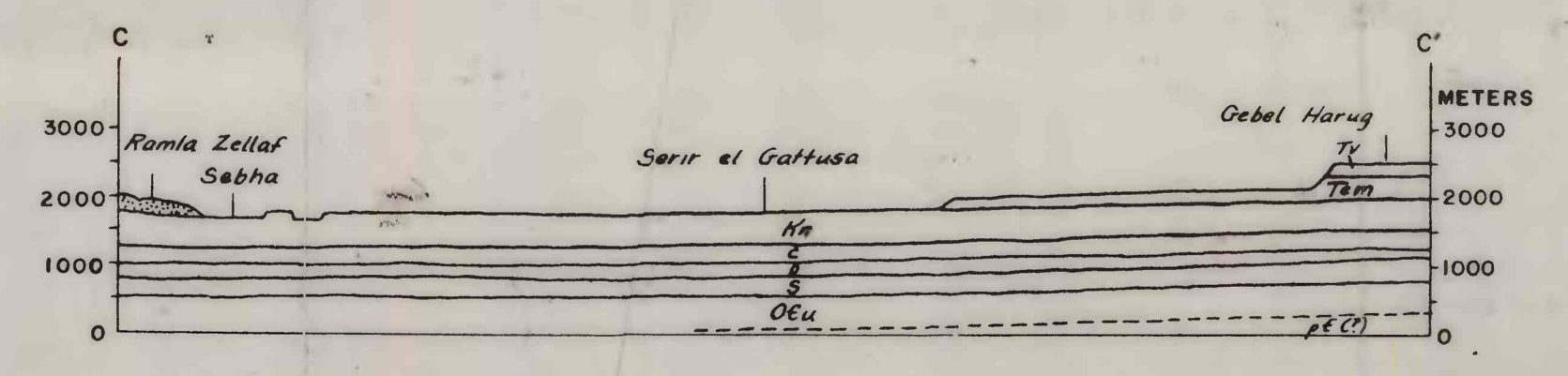
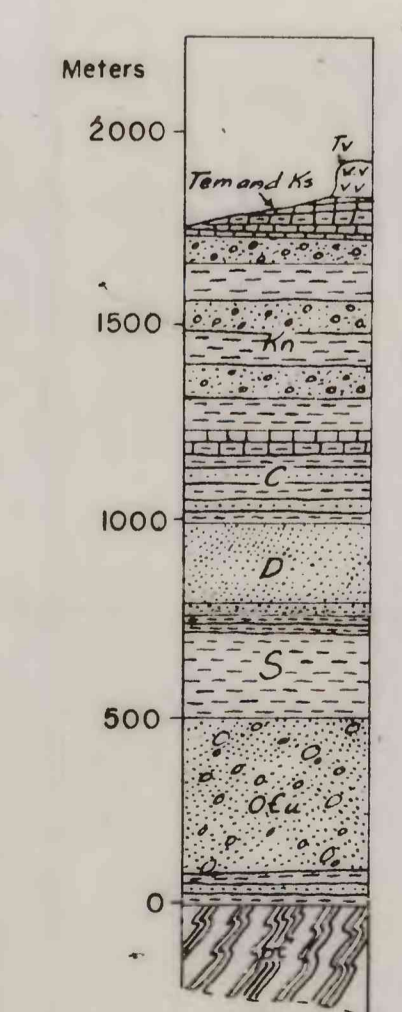
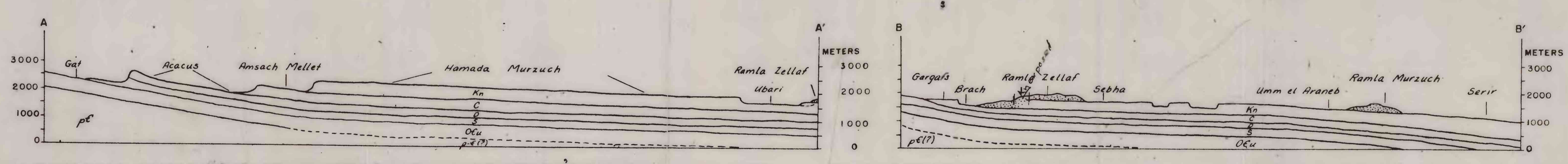
European terminology	American terminology
SEDIMENTARY ROCKS	
Qol	Unconsolidated and loosely consolidated silt, sand, and gravel of uadi deposits. Major present source of water in Fezzan.
Qs	Dune sand Fine-grained windblown sand of ramla. Acts as infiltration medium for meager precipitation.
Qg	Sand plain Fine-grained relatively dormant sand of edelen. Acts as infiltration medium for precipitation.
Tem	Gravel plain Residual sand and gravel of serir. Act as infiltration medium for precipitation.
TERTIARY	
Kn	Middle Eocene rocks, undivided Marine deposits of sandy limestone, clay, marl, and thin calcareous sandstone, interbedded. Ground-water possibilities not known.
CRETACEOUS	
Kn	Upper Cretaceous rocks, undivided Marine limestone and marl, interbedded, and some thin sandstones and gypsum. Ground-water possibilities not known.
CRETACEOUS	
Cv	Nubian series Continental deposits of conglomeratic sandstone and clay, interbedded. Yield moderate to large amounts of water to dug wells. Important potential source of ground water.
MISSISSIPPIAN SYSTEM	
Ct	Visean rocks, undivided Marine limestone, sandstone, clay, and marl, interbedded, and some gypsum. Ground-water possibilities not known.
DEVONIAN	
D	Tournesian rocks undivided Marine and continental siltstone and clay, interbedded, and extensive ferruginous beds. Siltstone yields small to moderate amounts of water to dug wells.
DEVONIAN	
S	Upper(?) Devonian rocks undivided Marine(?) and continental sandstone and conglomerate and some claystone, interbedded. Yield large amounts of water to flowing wells in Chatti Valley.
SILURIAN	
Deu	Silurian rocks, undivided Marine clay and continental sandstone and clay, interbedded. Sandstone bed generally too deeply buried to be developed. Ground-water possibilities not known.
CAMBRIAN AND ORDOVICIAN	
Deu	Cambrian and Ordovician rocks, undivided Continental(?) sandstone and conglomerate; claystone interbedded in lower part. Yield moderate amounts of water to dug wells in southern part of valley of Uadi Tanezzuft. Potential source of large amounts of water in drilled wells.

SCHEMATIC DIAGRAMS ILLUSTRATING STRUCTURE OF FEZZAN BASIN
VERTICAL SCALE REFERS TO THICKNESS OF STRATA AND NOT SEA LEVEL

Adapted by H. A. Whitcomb from Desio (1939) and Muller-Feuga (1954)

Not reviewed for conformance with standards and nomenclature of the Geological Survey.

GENERAL COLUMNAR SECTION



European terminology	American terminology
IGNEOUS AND METAMORPHIC ROCKS	
Kn	Volcanic rocks, undivided Basalt flows. Ground-water possibilities not known.
PRECAMBRIAN	
Kn	Crystalline rocks, undivided Complex of gneisses and crystalline schists. Ground-water possibilities not known.
PRECAMBRIAN	
Kn	Strike and dip of beds
Kn	Major village
Kn	Main road
Kn	Desert track suitable for four-wheel-drive vehicles
Kn	Caravan route