

Stanolind Oil & Gas Co.  
 #3B Herboldshelmér  
 C SW $\frac{1}{4}$  NE $\frac{1}{4}$  sec. 26

Gem Oil Co.  
 #4 Hafeman  
 SE $\frac{1}{4}$  NW $\frac{1}{4}$  NE $\frac{1}{4}$  sec. 23

Magnolia Petroleum Co.  
 #1 Stowers  
 NW $\frac{1}{4}$  NW $\frac{1}{4}$  SW $\frac{1}{4}$  sec. 14

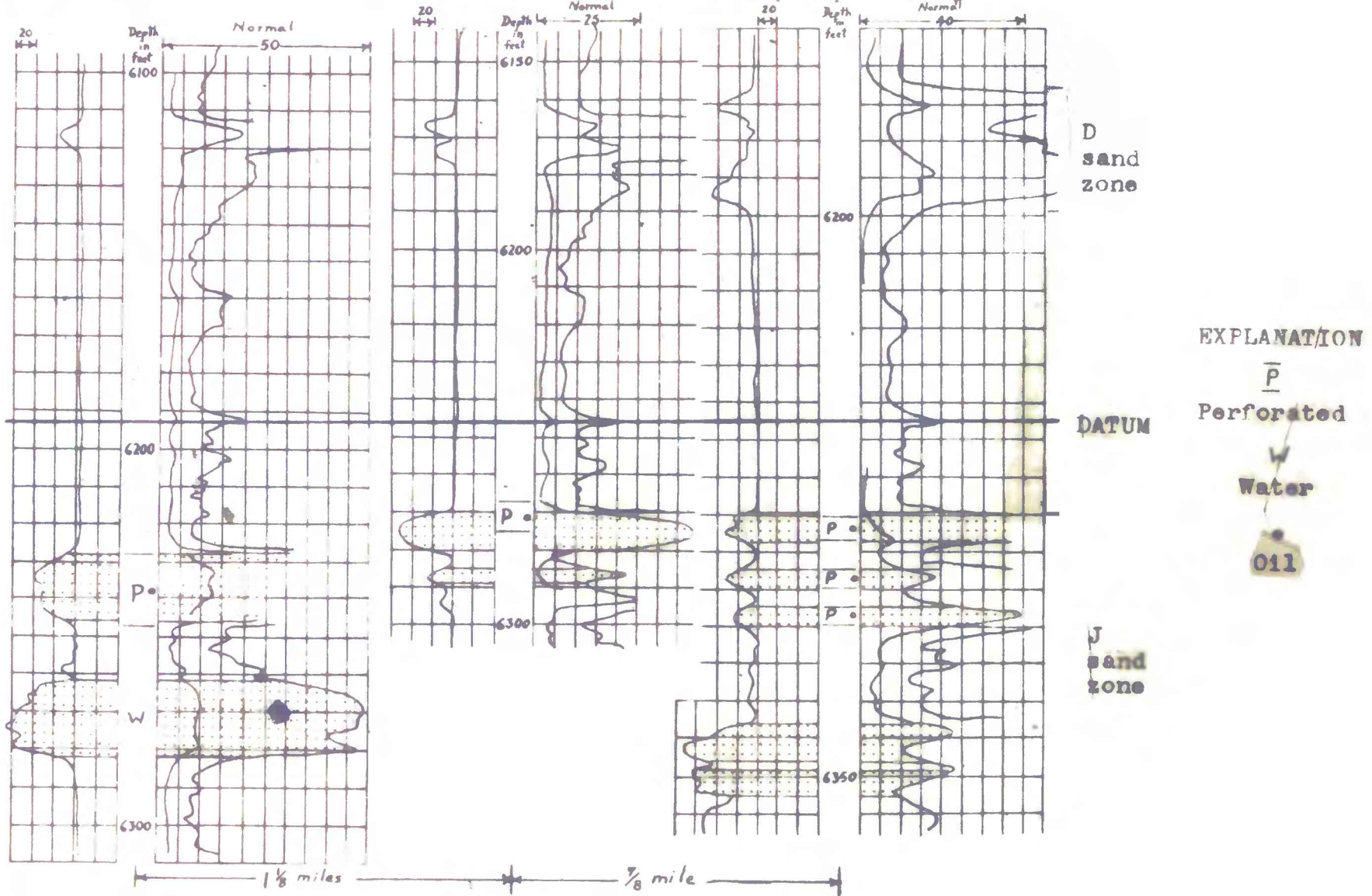


FIGURE 8. Electric logs of three wells in T. 14 N., R. 55 W., Kimball County, Nebraska, showing lenticular character of oil-bearing sands in the upper part and water-bearing sands in the lower part of the J sand zone of the Dakota sandstone.