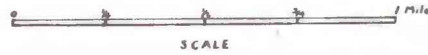
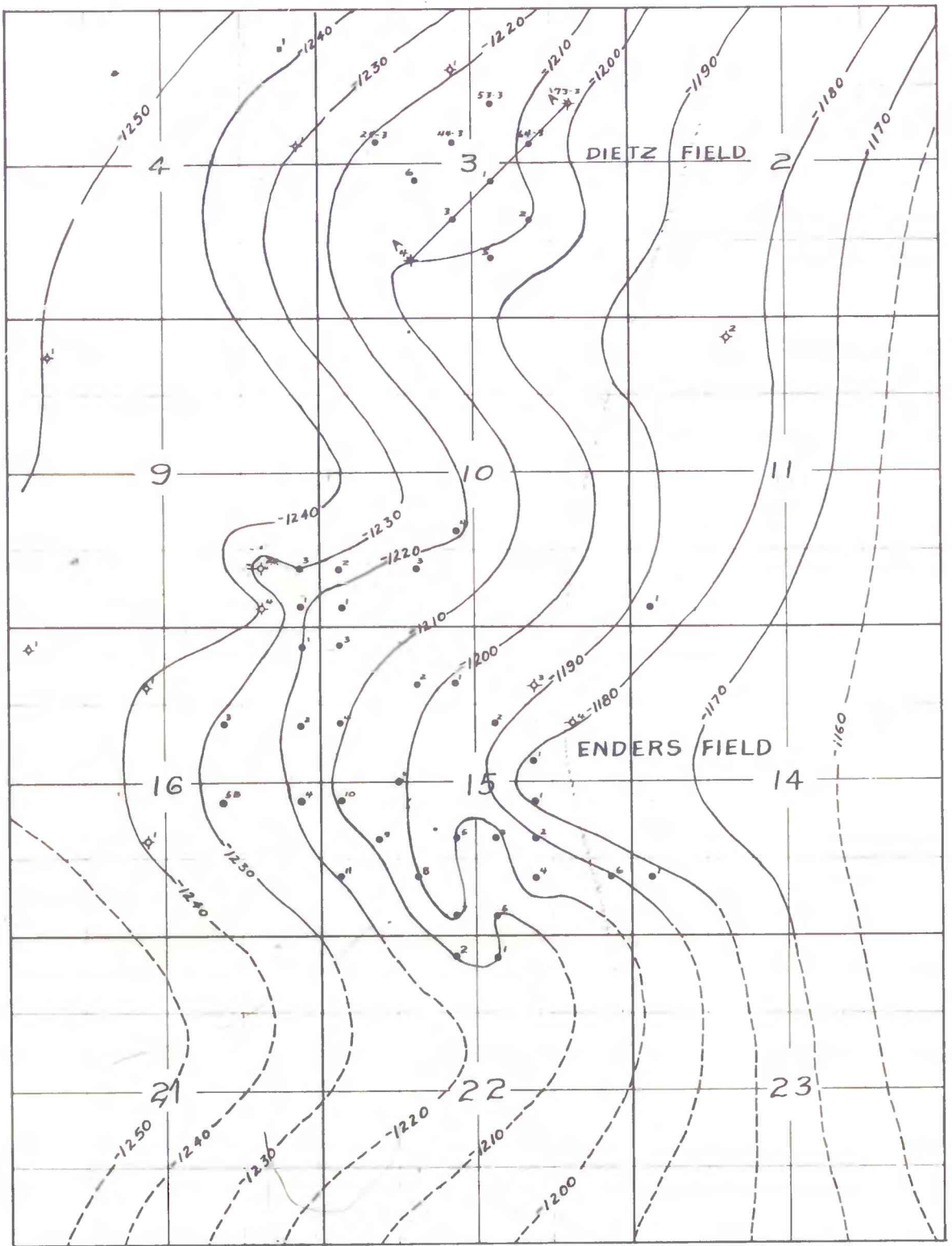


R. 55 W.

T. 13 N.



EXPLANATION

— 1200 —
 Structure contour
 Dashed where approximately located.
 Contour interval is 10 feet. Datum
 is mean sea level.

● 4
 Oil well and well number

⊠ 2
 Dry hole and well number

A — A'
 Line of cross section
 shown on figure 12

FIGURE 13. Structure-contour map of the Enders and Dietz oil fields, Kimball County, Nebraska. Contours drawn on the 'bentonite marker' bed in the Graneros shale 225-245 feet above the J sand zone of the Dakota sandstone.