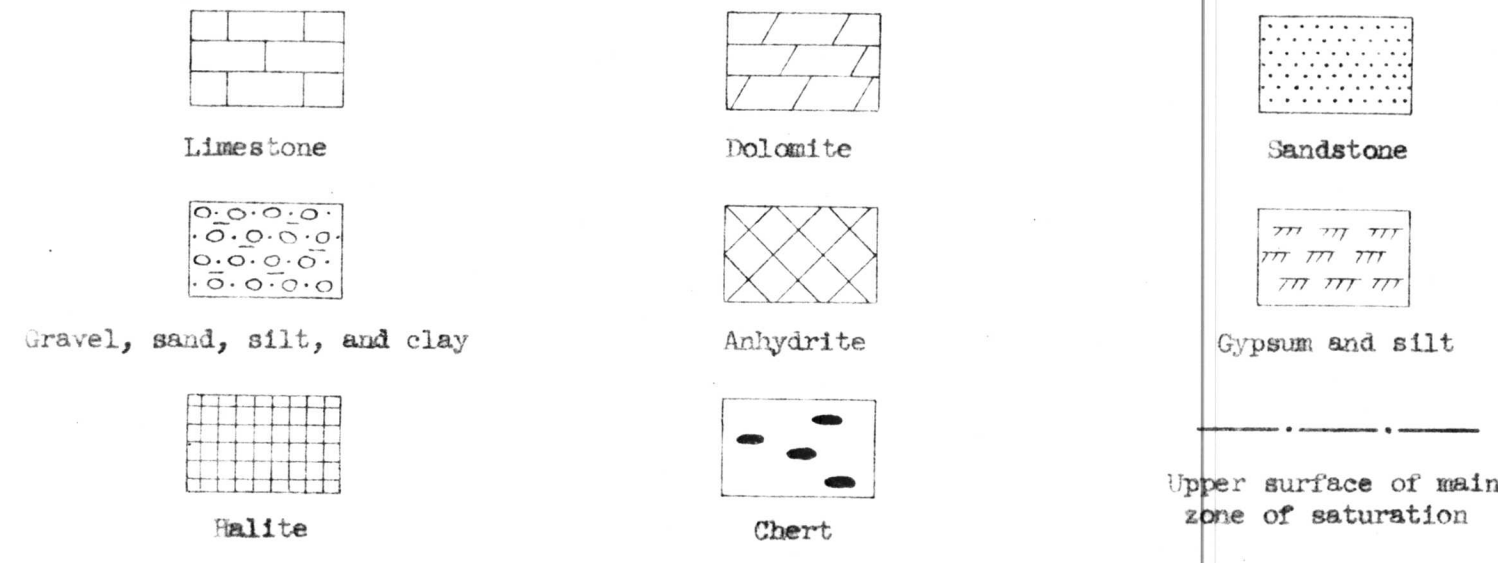
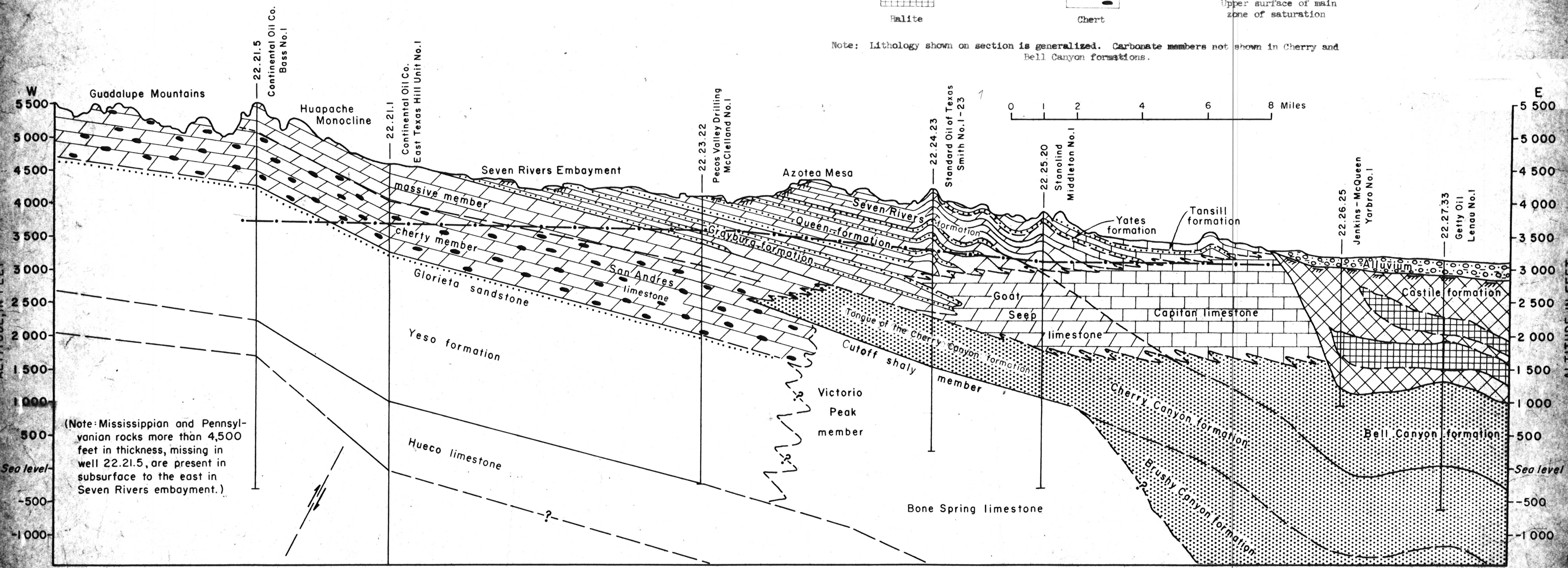


EXPLANATION



Note: Lithology shown on section is generalized. Carbonate members not shown in Cherry and Bell Canyon formations.



(Note: Mississippian and Pennsylvanian rocks more than 4,500 feet in thickness, missing in well 22.21.5, are present in subsurface to the east in Seven Rivers embayment.)

Figure 12.--Idealized east-west geologic section showing the general occurrence of ground water in the Carlsbad area, Eddy County, N. Mex.