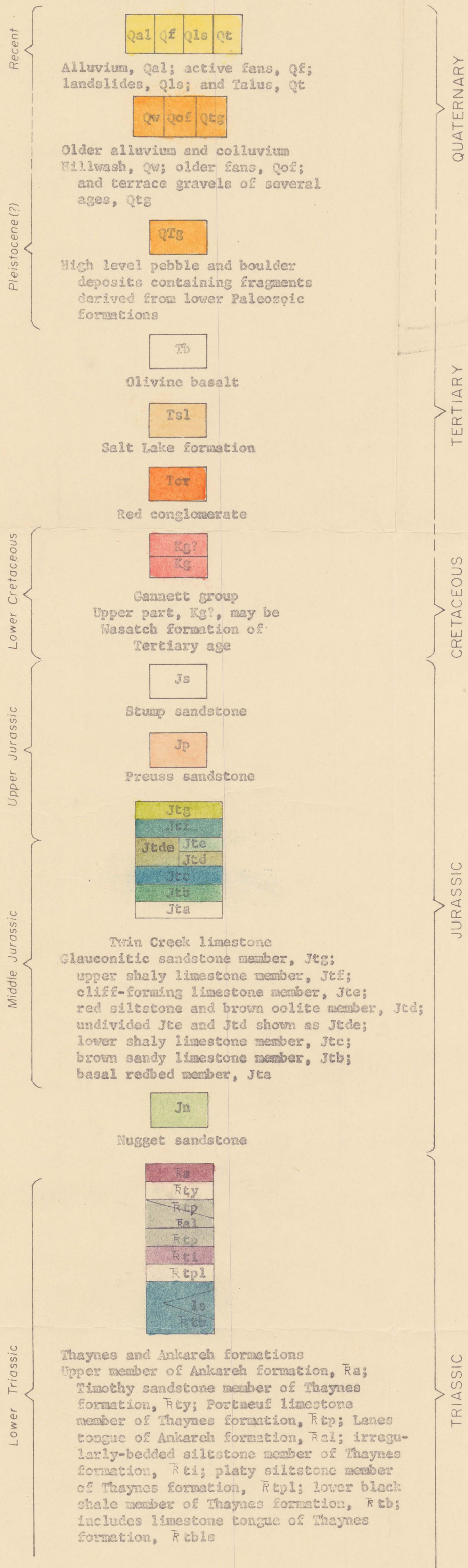


EXPLANATION

for

Geologic map of Georgetown Canyon
 and vicinity, Bear Lake and
 Caribou Counties, Idaho



QUATERNARY

TERTIARY

CRETACEOUS

JURASSIC

TRIASSIC

Rdu
 Rdl
 Dinwoody formation
 Upper limestone and siltstone member, Rdu;
 Lower siltstone and shale member, Rdl

Ppr
 Ppm
 Phosphoria formation
 Rex chert member, Ppr; includes
 cherty shale member
 Meade Peak phosphatic shale member, Ppm

Pwu
 Pwi
 Wells formation
 Upper sandstone and dolomite member of Permian
 age (includes Grandeur tongue of Park City
 formation at top) Pwu; lower limestone and
 sandstone member of Pennsylvanian age, Pwi

MB
 Brazer limestone
 Lowermost sandstone (s) mapped
 locally

Madison limestone
 Phosphate horizon (p)
 mapped locally

Contact
 Long dashed where approximately located,
 short dashed where inferred, dotted
 where concealed

Fault
 Long dashed where approximately located, short
 dashed where inferred, dotted where concealed.
 U, upthrown side; D, downthrown side;
 arrows show relative movement

Thrust fault
 T on upper plate

Anticline
 Trace of axial plane and direction
 of plunge. Dashed where
 approximately located

Overtured anticline
 Trace of axial plane and direction of
 plunge. Dashed where approximately
 located, dotted where concealed

Syncline
 Trace of axial plane and direction of plunge.
 Dashed where approximately located

Overtured syncline
 Trace of axial plane and direction of plunge.
 Dashed where approximately located

Strike and dip of beds
 Symbol on right used where top of
 bed can be distinguished

Strike and dip of overturned beds
 Symbol on right used where top of
 bed can be distinguished

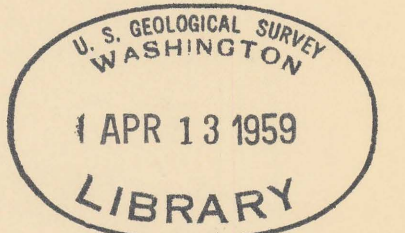
Strike and dip of vertical beds
 Symbol on right used where top of
 bed can be distinguished

Fault breccia

PERMIAN

PENNSYLVANIAN

MISSISSIPPIAN



Idaho (Georgetown Canyon area). Geol. 1:40,000. 1959.

sheet 2,
 cop. 1

M(200)
 R290
 no.59-25
 sheet
 2 of 2
 (1)

