

EXPLANATION
FOR THE MAP

Margin of area underlain by younger alluvium deposited in an old entrenched channel of Mill Creek, locally called the Mill Creek water-bearing zone

Area underlain by pre-Tertiary basement complex and consolidated Tertiary sandstone, essentially non-water-bearing

Fault
Dashed where approximately located, dotted where concealed, questioned where existence is doubtful
U, upthrown side; D, downthrown side

Ground-water barrier, approx. (note), located where coincident with faults; the large dot symbols are superposed on the appropriate fault symbol; questioned where doubtful

Water level profile
Dashed where contour is not of 100 ft. interval; arrows indicate direction of ground-water movement. Contour interval 25 feet

Well
Irrigation or public supply well
Small-capacity or unused well
Dry or destroyed well (1955)

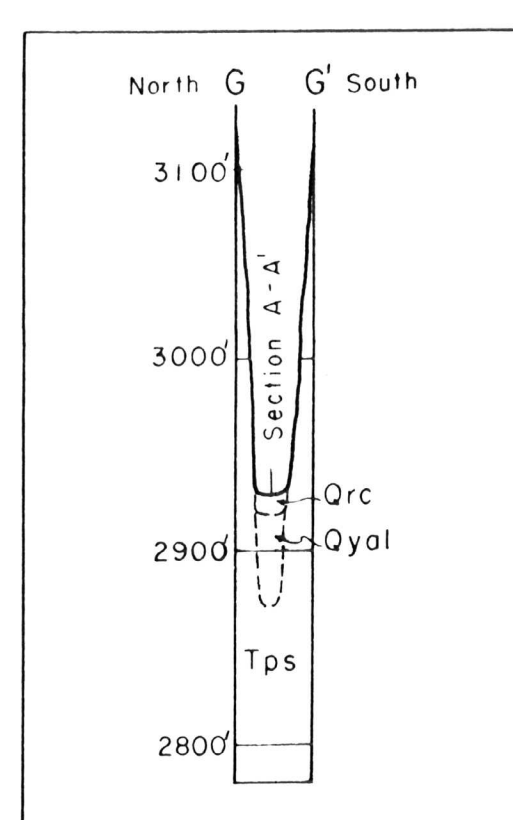
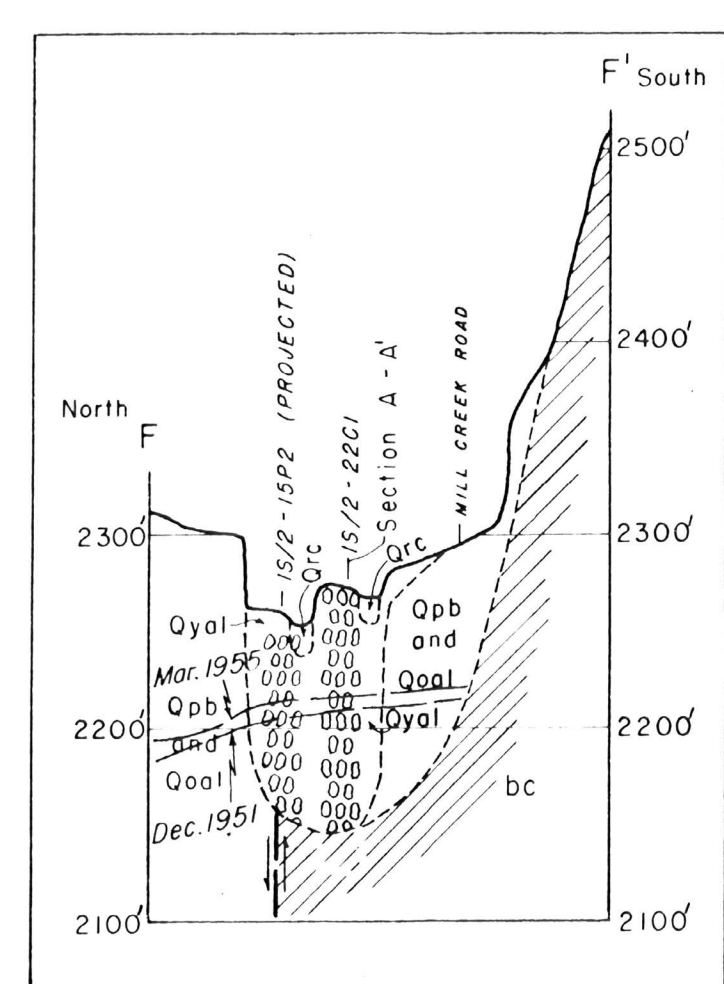
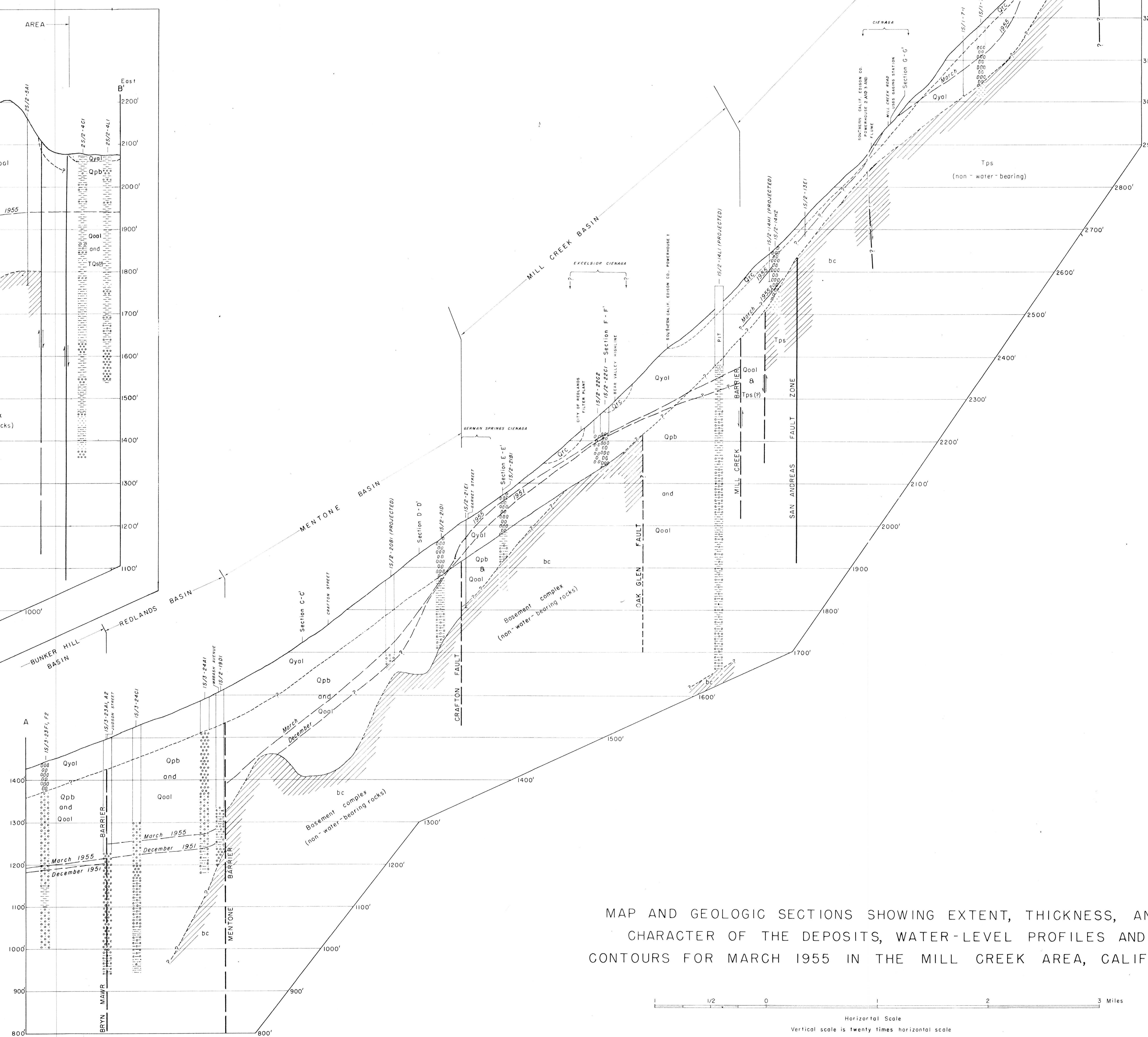
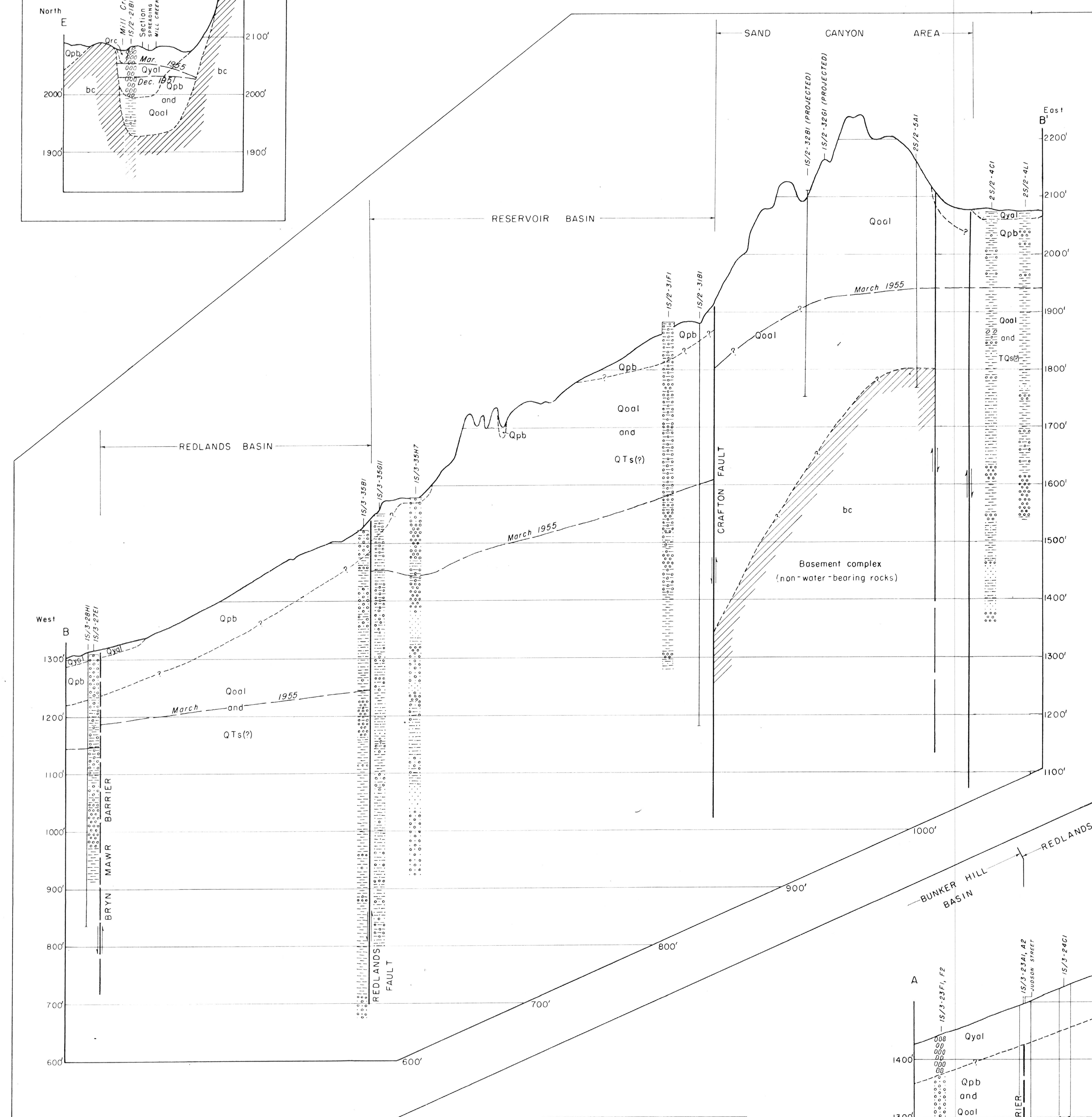
FOR THE CROSS SECTIONS

Qrc, river channel deposits; Qyal, younger alluvium; Qpb, older plain and bench deposits; Qool, older alluvium; Qts, San Timoteo beds of Frick (1923); Tps, Patona sandstone of Vaughan (1923); bc, basement complex; see plate 2 for areal extent; see plates 2, 3, and 5 for line of section B-B'

March 1955
Water-level profile

Boulders and cobble gravel
Gravel
Sand
Sand and gravel
Clay and gravel
Sand, some clay and silt
Clay
Basement complex

Wells for which logs are not available are shown by vertical lines



MAP AND GEOLOGIC SECTIONS SHOWING EXTENT, THICKNESS, AND CHARACTER OF THE DEPOSITS, WATER-LEVEL PROFILES AND CONTOURS FOR MARCH 1955 IN THE MILL CREEK AREA, CALIFORNIA

