

Base from authors' field sheets, land plats from Bureau of Land Management, U.S.G.S. topographic maps and aerial photographs.

Geology by G.H. Horn and W.C. Gere. Surveyed August 6-12, 1954.

**EXPOSURE ROCKS**

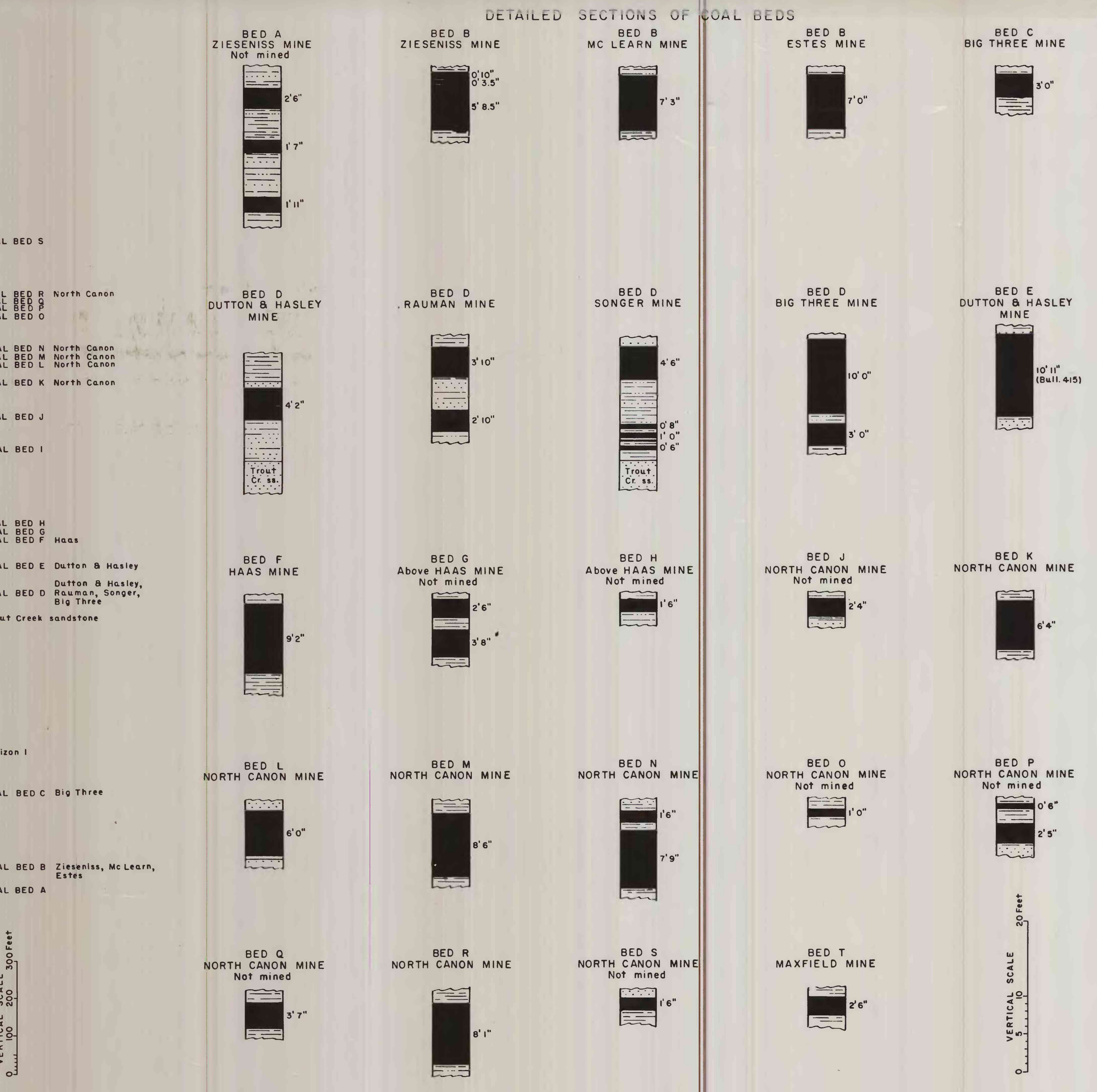
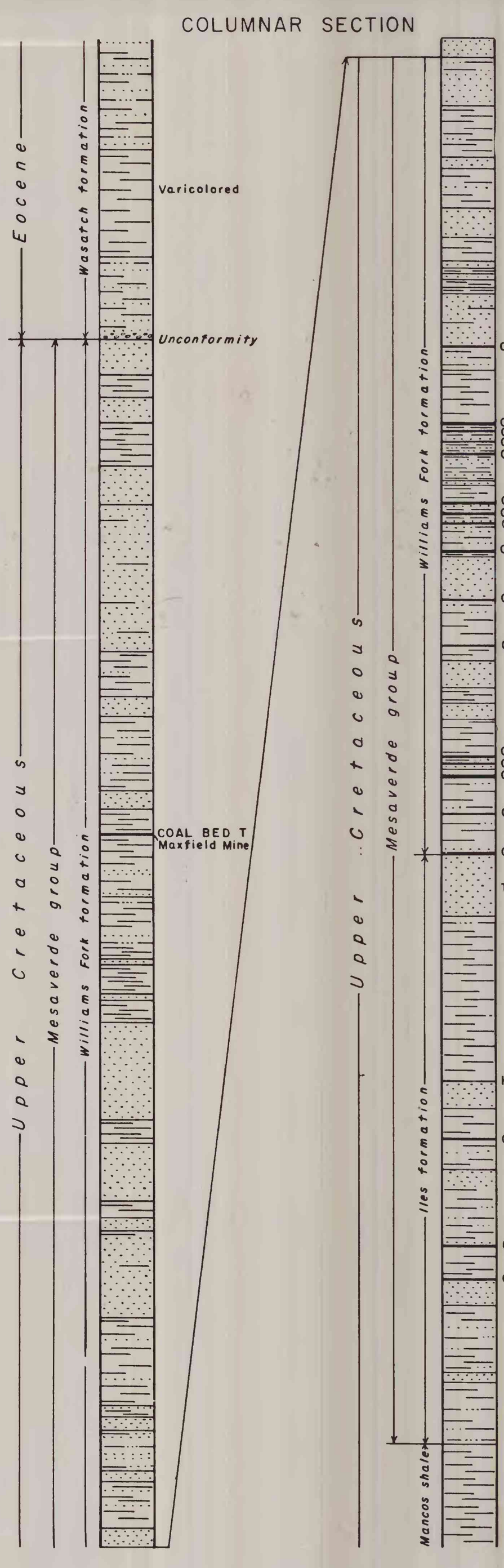
- Eocene Recent:** Qal (Alluvium), Tw (Wasatch formation)
- Upper Cretaceous:** Kwf (Williams Fork formation), Ki (Illes formation), Km (Mancos shale)

**EXPLANATION**

- Coal mine (solid line)
- Abandoned coal mine (dashed line)
- Coal prospect (X)
- Bench mark and altitude in feet above mean sea level (BM X 5860)
- Section corner recovered (+)
- Surface fault (line with ticks)
- Strike and dip of beds (line with '68')
- Coal bed (line with letter, e.g., 'B')
- Thin bedded shaly sandstone or sandy shale (wavy lines)
- Clinker (v v v)
- Burned coal bed (line with 'v v v')

**LITHOLOGIC SYMBOLS**

- Conglomerate (stippled)
- Shale (horizontal lines)
- Haas (dotted)
- Coal (solid black)
- Sandstone (horizontal dashes)



**GEOLOGIC MAP OF THE RIFLE GAP COAL DISTRICT, GARFIELD COUNTY, COLORADO**

