

(200)  
R290  
70.476!  
1959

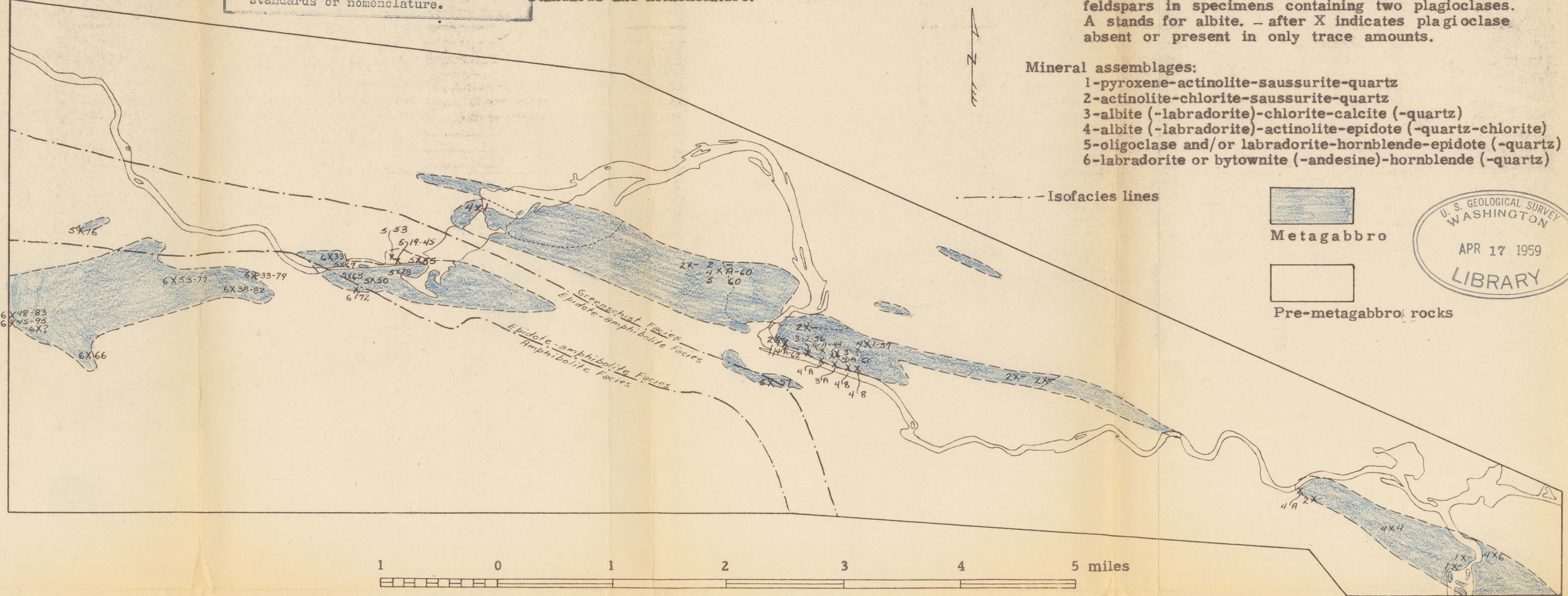
U. S. Geological Survey  
OPEN FILE REPORT  
This report is preliminary and has not been edited or reviewed for conformity with Geological Survey standards or nomenclature.

This map is preliminary and has not been edited or reviewed for conformity with Geological Survey standards and nomenclature.

EXPLANATION

6X66  
Sample locality. The number before the X denotes mineral assemblage; the number after the X is plagioclase composition in percent anorthite. Two figures after the X separated by - indicate the composition of both feldspars in specimens containing two plagioclases. A stands for albite. - after X indicates plagioclase absent or present in only trace amounts.

- Mineral assemblages:
- 1-pyroxene-actinolite-saussurite-quartz
  - 2-actinolite-chlorite-saussurite-quartz
  - 3-albite (-labradorite)-chlorite-calcite (-quartz)
  - 4-albite (-labradorite)-actinolite-epidote (-quartz-chlorite)
  - 5-oligoclase and/or labradorite-hornblende-epidote (-quartz)
  - 6-labradorite or bytownite (-andesine)-hornblende (-quartz)



GENERALIZED GEOLOGIC MAP SHOWING PLAGIOCLASE COMPOSITION AND MINERAL ASSEMBLAGE  
OF NORMAL METAGABBRO