A circular stamp from the U.S. Geological Survey Library, featuring the text "U.S. GEOLOGICAL SURVEY" around the top arc and "LIBRARY" at the bottom.

U. S. Geological Survey
OPEN FILE REPORT
This report is preliminary and has
not been edited or reviewed for
conformity with Geological Survey
standards or nomenclature.

EXPLANATION

3X30

Sample locality. The number before the X denotes mineral assemblage; the number after the X is plagioclase composition in percent anorthite. Two figures after the X and separated by ~ indicate the range in composition of zoned plagioclase. A stands for albite.

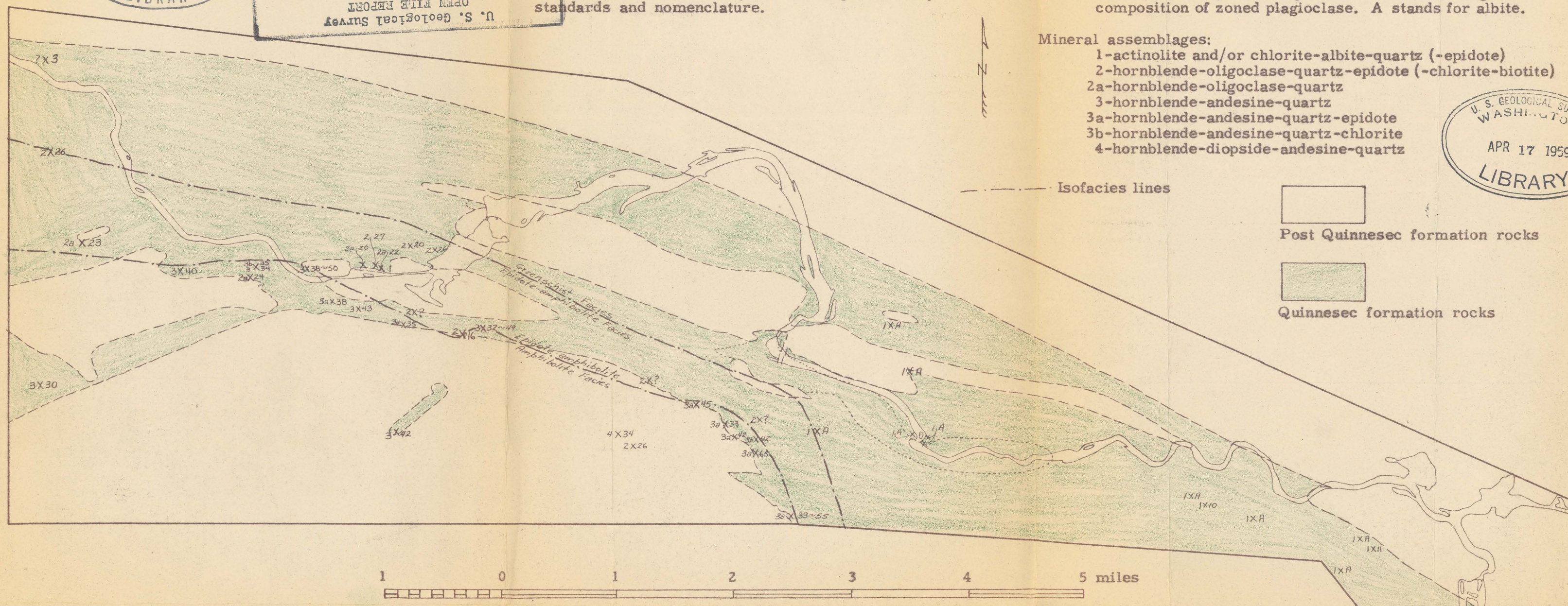
Mineral assemblages:

- 1-actinolite and/or chlorite-albite-quartz (-epidote)
2-hornblende-oligoclase-quartz-epidote (-chlorite-biotite)
2a-hornblende-oligoclase-quartz
3-hornblende-andesine-quartz
3a-hornblende-andesine-quartz-epidote
3b-hornblende-andesine-quartz-chlorite
4-hornblende-diopside-andesine-quartz
- U. S. GEOLOGICAL
WASHINGTON
APR 17 19

- Isofacies lines

Post Quinnesec formation rocks

Quinnesec formation rocks



GENERALIZED GEOLOGIC MAP SHOWING PLAGIOCLASE COMPOSITION AND MINERAL ASSEMBLAGE
OF QUINNESEC FORMATION GREENSTONE AND AMPHIBOLITE