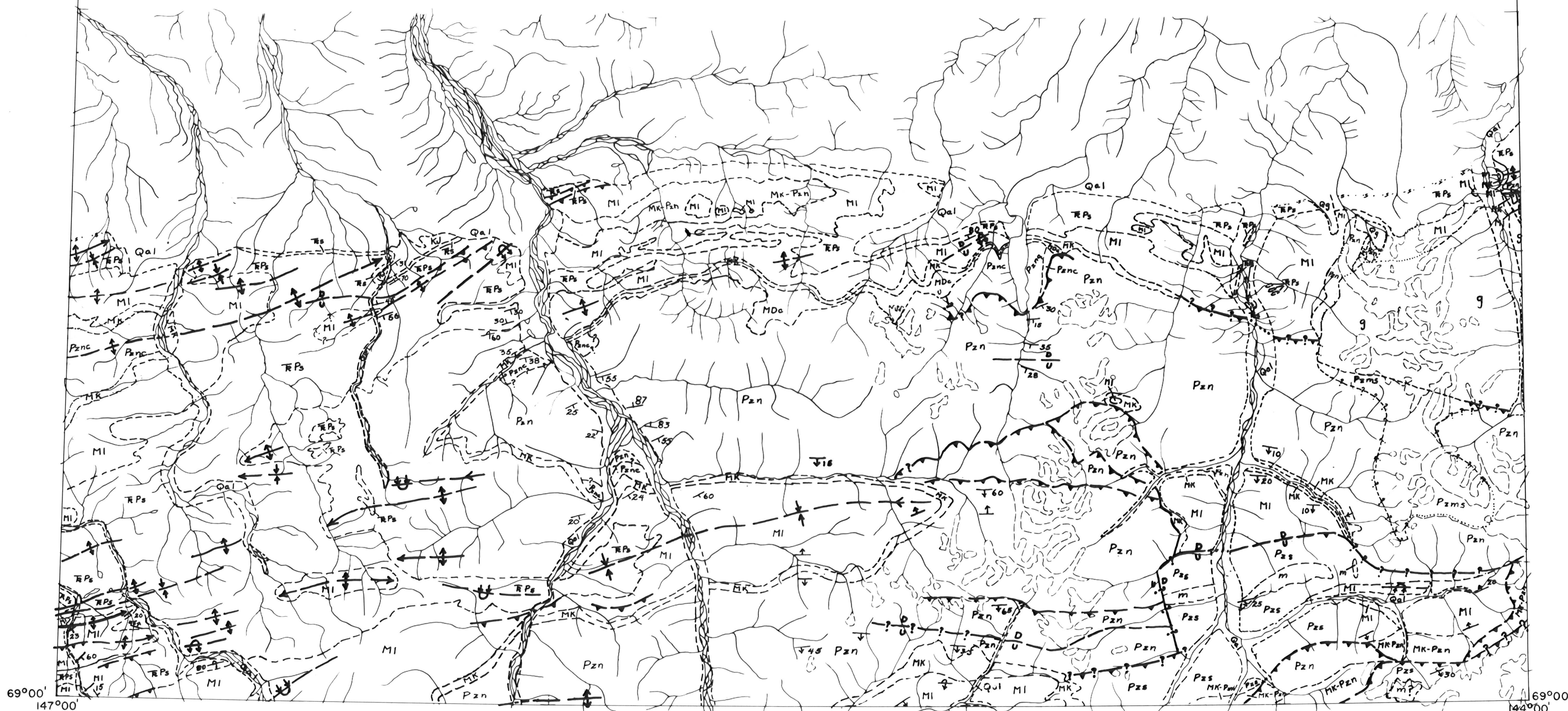


147°00'
70°00'

144°00'
70°00'



Planimetry adapted from Topographic Series, pre-compilation of 1:250,000 Mt. Michelson quadrangle

Scale: 250,000

See index map for sources of geologic data

5 0 5 10 15 20 25 Miles

This map is preliminary and has not been edited or reviewed for conformity with U.S. Geological Survey standards and nomenclature

1960 MAGNETIC DECLINATION AT SOUTH EDGE OF SHEET VARIES FROM 32°30' TO 34°30' EAST

PREPARED IN COOPERATION WITH THE U.S. DEPARTMENT OF THE NAVY, OFFICE OF NAVAL PETROLEUM AND OIL SHALE RESERVES

MT. MICHELSON, ALASKA