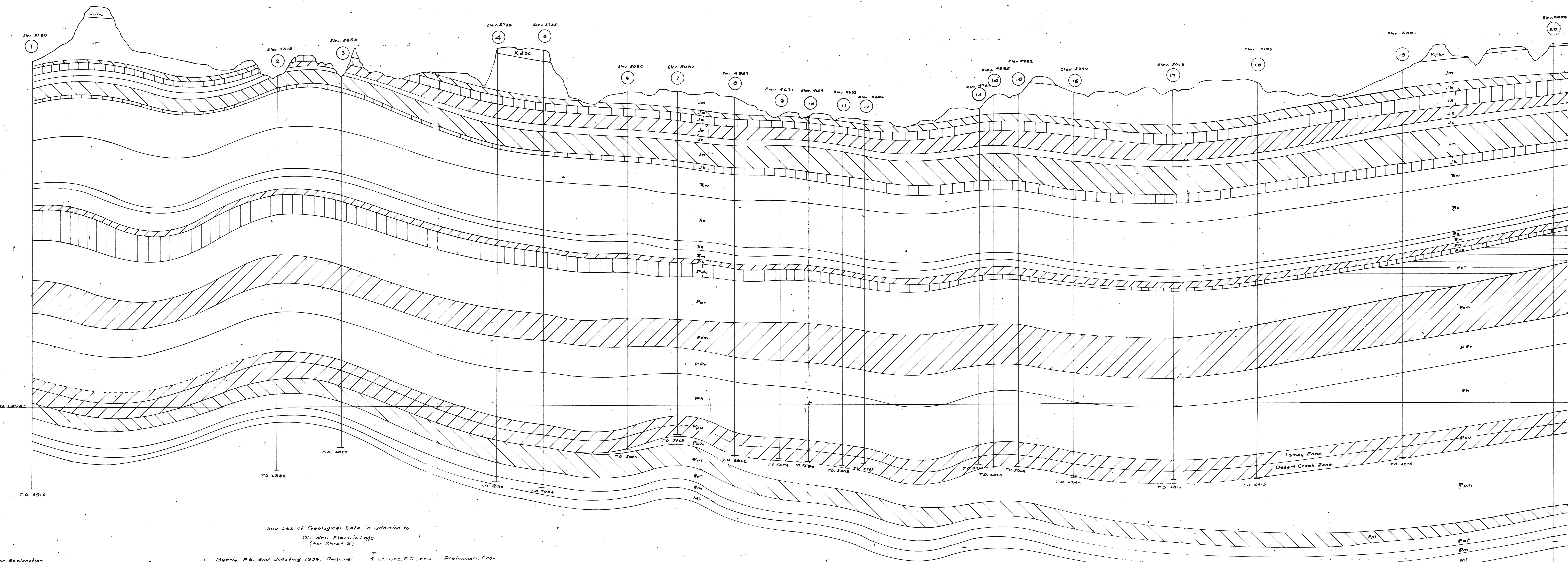


HTUO2 - HTA01

SOUTH

- List of wells on section
- ① La Rue - Navajo 1, Sec 10, T40N, R20E
  - ② Humble - Navajo 1, Sec 4, T41N, R20E
  - ③ Shell - East Boundary Outk 3, Sec 25, T43S, R23E
  - ④ Davis - 1-U, Sec 26, T42S, R23E
  - ⑤ Davis - 2-U, Sec 25, T42S, R23E
  - ⑥ Conaco - Navajo 12-1, Sec 12, T42S, R23E
  - ⑦ Shell - Desert Creek 22-1, Sec 1, T42S, R23E
  - ⑧ Shell - N. Desert Creek 26-28, Sec 28, T41S, R23E
  - ⑨ Shell - N. Desert Creek 31-24, Sec 24, T41S, R23E
  - ⑩ Shell - N. Desert Creek 31-13, Sec 13, T41S, R23E
  - ⑪ Shell - N. Desert Creek 31-12, Sec 12, T41S, R23E
  - ⑫ Shell - N. Desert Creek 33-1, Sec 1, T41S, R23E
  - ⑬ Shell - Burton 44-13, Sec 13, T40S, R23E
  - ⑭ Shell - Burton 42-13, Sec 13, T40S, R23E
  - ⑮ Shell - Burton 43-12, Sec 12, T40S, R23E
  - ⑯ Carter Govt. Arrowhead 1, Sec 31, T39S, R24E
  - ⑰ Sun Ray, Utah Federal A-1, Sec 17, T39S, R24E
  - ⑱ Buffalo Petroleum Hatch Unit No. 2, Sec 6, T39S, R24E
  - ⑲ Bartley Bug Canyon 1, Sec 9, T38S, R24E
  - ⑳ Pan American No. 1 Deadman Canyon, Sec 20, T37S, R24E
  - ㉑ Kinwood Oil Co. Montezuma Creek No. 2, Sec 22, T36S, R24E
  - ㉒ Sinclair Fred Friedman No. 1, Sec 4, T35S, R24E
  - ㉓ Byrd Frost Sifton No. 1, Sec 17, T33S, R25E
  - ㉔ Skelly Oil Co. No. 1 Summit Point, Sec 21, T31S, R25E
  - ㉕ Pioneer Uranium No. 1, Sec 6, T30S, R25E



Sources of Geological Data in addition to  
Oil Well Electric Logs  
(for Sheet 2)

- 1. Byerly, R.E. and Joesting, 1939, "Regional Geophysical Investigations of the Liabon Valley Area, Utah and Colorado," U.S. Geol. Survey Prof. Paper 316-C.
- 2. Huff, L.C. and Lezure, F.G., 1958, "Preliminary Map of the Verdure 2 SE Quadrangle San Juan Co., Utah," *ibid.*, Map MF 163.
- 3. \_\_\_\_\_, 1958, "Preliminary Geologic Map of the Verdure 3 SE Quadrangle San Juan Co., Utah," *ibid.*, Map MF 167.
- 4. Lezure, F.G. et al., "Preliminary Geologic Map of the Verdure 1 SW Quad. San Juan Co., Utah," *ibid.*, Map MF 164.
- 5. \_\_\_\_\_, 1958, "Preliminary Geologic Map of the Verdure 2 SE Quadrangle San Juan Co., Utah," *ibid.*, Map MF 165.
- 6. Strabell, J.D., Jr., 1956, "Geology of the Carrizo Mountains Area in Northwestern Arizona and Northwestern New Mexico," *ibid.*, Map OM 180.

See Sheet 1 for Explanation

Note:  
This cross section has not been reviewed for  
conformance with the Geological Survey's  
official classification and nomenclature of  
the rock strata.