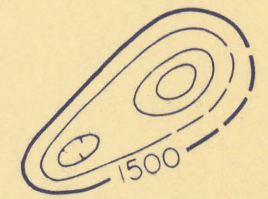
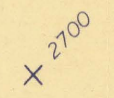


EXPLANATION



Magnetic contours showing total intensity magnetic field of the earth in gammas, relative to arbitrary datum; hachured to indicate closed areas of lower magnetic intensity; dashed where data are incomplete

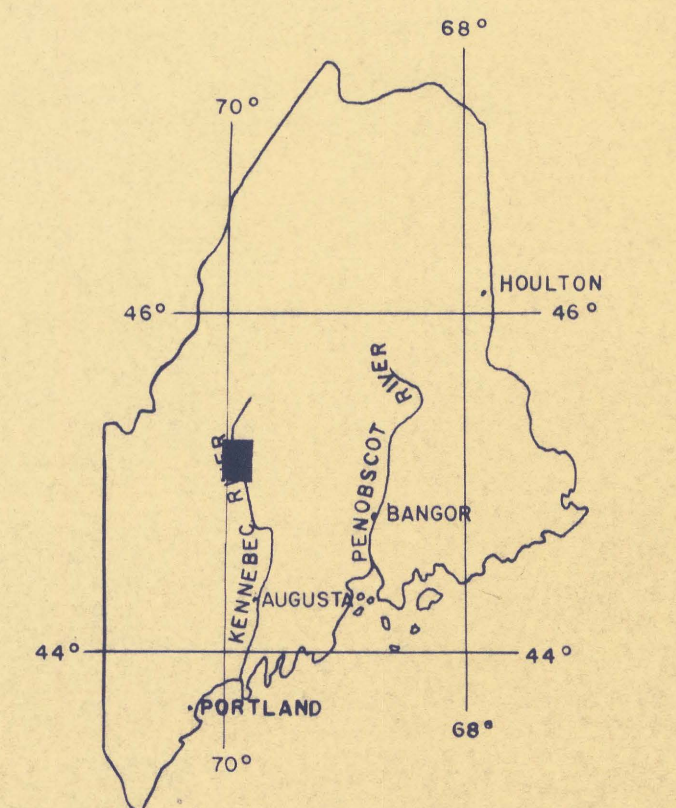


Measured maximum or minimum intensity within closed high or closed low.

Flight path shows location and spacing of data

NOTE

Aeromagnetic data are obtained and compiled along a continuous line, whereas ground magnetic surveys are made at separate points. Errors within the normal limits of any magnetic measurement may cause slight discrepancies between flight lines in an aeromagnetic map, which would be more obvious than similar discrepancies between points in a ground magnetic map. For this reason as much care should be exercised in evaluating magnetic features that appear as elongations along a single aeromagnetic traverse as in interpreting an anomaly indicated by a single ground station.



Index map of Maine showing location of this map

Base map by Topographic Division
U. S. Geological Survey

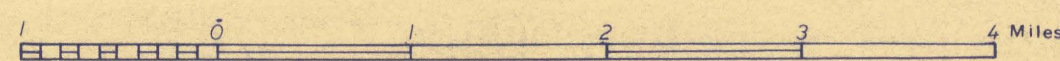
AEROMAGNETIC MAP OF THE BINGHAM QUADRANGLE,
SOMERSET COUNTY, MAINE

Aeromagnetic survey flown
350 feet above ground by
R. W. Bromery, 1958
Compilation Prepared by
N C Natof

CONTOUR INTERVAL 10 AND 50 GAMMAS

Scale 1:62 500

GEOPHYSICAL INVESTIGATIONS
PRELIMINARY MAP



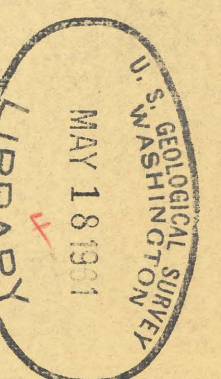
1961

This map is preliminary and has not been edited or reviewed for conformity to Geological Survey standards and nomenclature

U. S. GEOLOGICAL SURVEY

Released to open files

5/23/61



Maine (Bingham quad.) Aeromagnetic. 1:62,500 1961. cop. 1.

M(200)
R290
no. 61-26
sheet 2 of 2
c.l.

