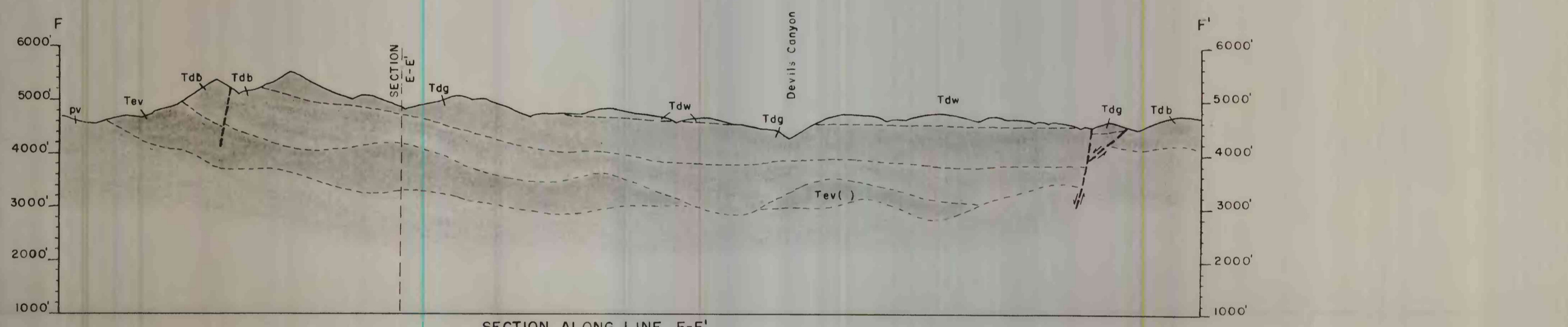
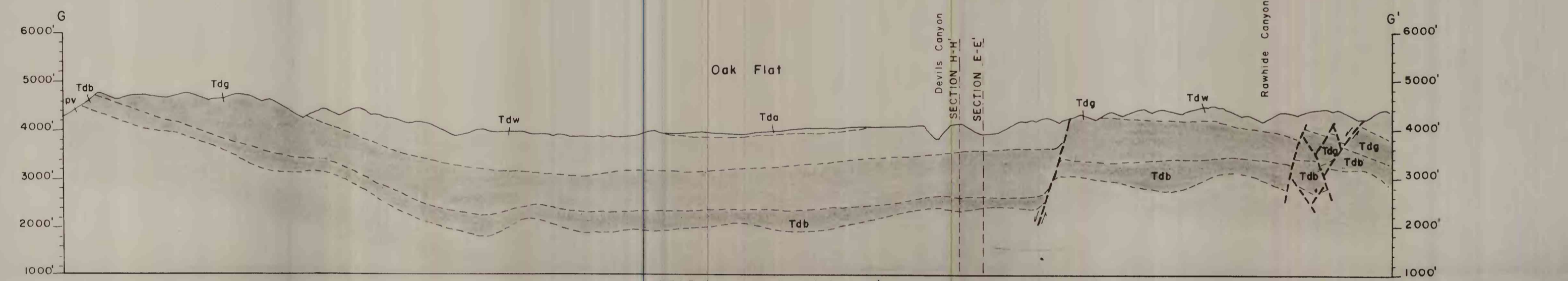


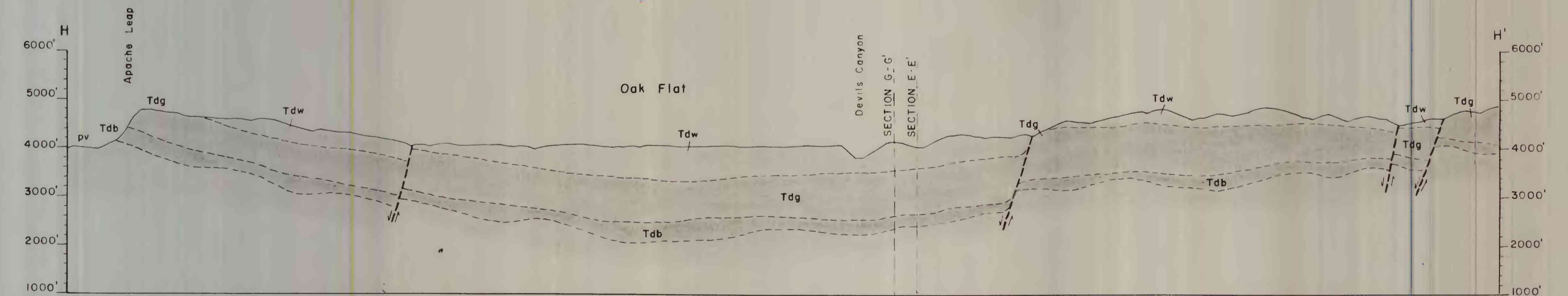
SECTION ALONG LINE E-E'-E''



SECTION ALONG LINE F-F'



SECTION ALONG LINE G-G'



SECTION ALONG LINE H-H'

**EXPLANATION**

--- Contact  
 - - - Fault  
 Arrows show relative direction of slip  
 Dotted arrows show direction of movement associated with caldera collapse. Outermost arrows lie at approximate border of caldera (Section E-E').

Formation symbols are identified on plates 4 and 6.

U. S. Geological Survey  
 OPEN FILE REPORT  
 This report is preliminary and has not been edited or reviewed for conformity with Geological Survey standards or nomenclature.

Plate 5.--Geologic cross sections. Section lines are shown on plates 4 and 6.

IN BACK OF COVER OF VOLUME  
 BEST COPY AVAILABLE