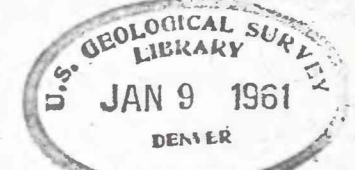
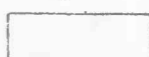
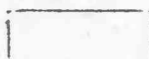



(200)  
T67Wms  
no. 462

61-139



CLAIM INDEX  
EXPLANATION

-  Mining claim, millsite, or agricultural land, patented or surveyed for patent, plotted from surveyed plats. 1/
-  Mining claim or millsite, unpatented, plotted from fairly reliable information, but subject to correction.
-  Mining claim, unpatented, plotted from information of doubtful reliability and subject to correction.

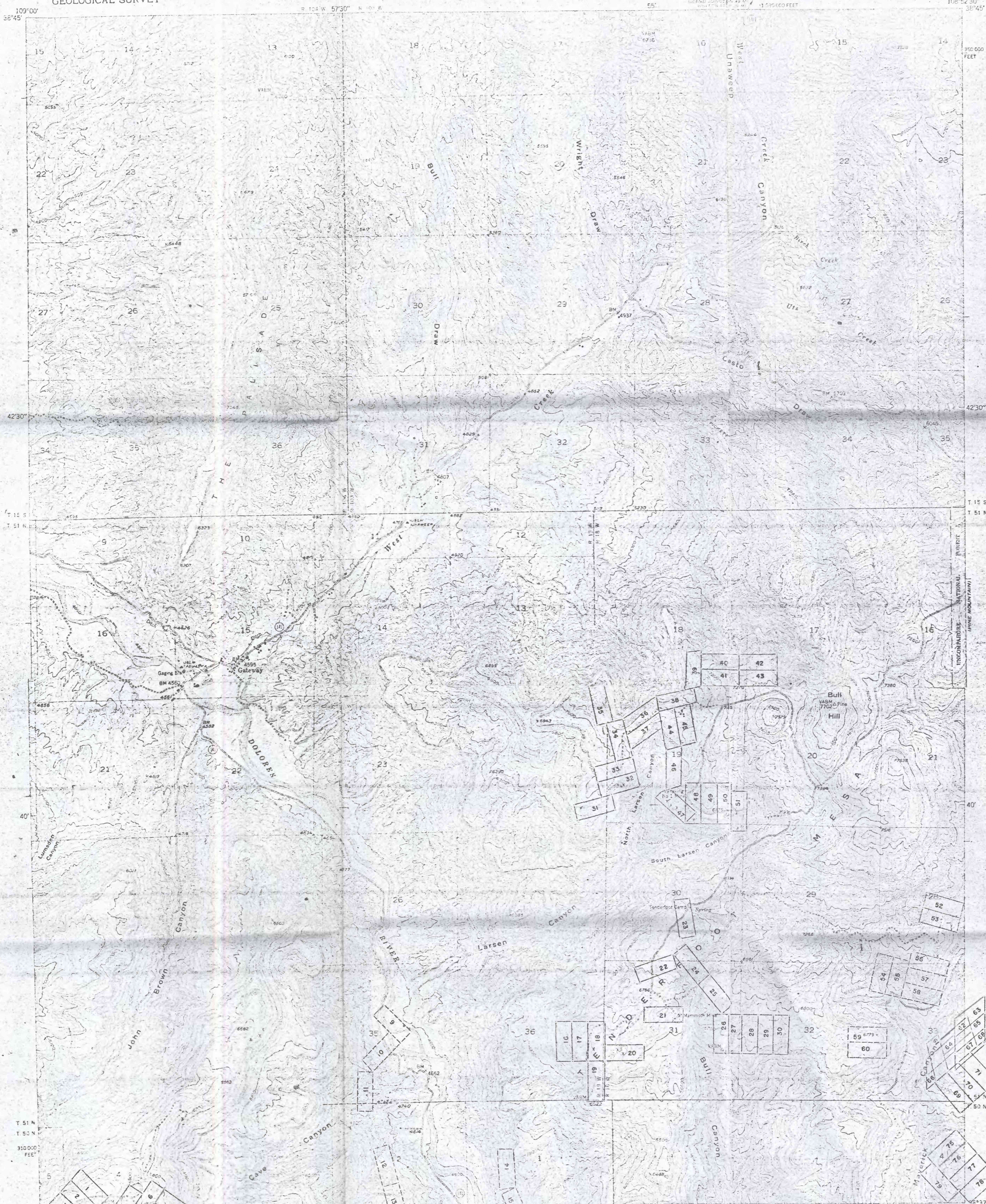
LIST OF CLAIMS

- 1 Larry No. 15
- 2 Larry No. 14
- 3 Larry No. 11
- 4 Larry No. 10
- 5 Larry No. 18
- 6 Larry No. 17
- 7 Cave No. 2
- 8 Cave
- 9 Pale Face
- 10 Sandy Dunn
- 11 Dirty Devil
- 12 Pay Day
- 13 Lucky Day
- 14 White Swan
- 15 Snow Drift
- 16 Rosebud
- 17 Liberty Bell No. 1
- 18 Liberty Bell No. 2
- 19 Chico
- 20 Lincoln
- 21 Mammoth
- 22 Salida
- 23 Homestead
- 24 Fountain of Youth
- 25 Little Johnie
- 26 Roulette No. 1
- 27 Roulette No. 2
- 28 Roulette No. 3
- 29 Roulette No. 4
- 30 Roulette No. 5
- 31 Pay Rock No. 14
- 32 Pay Rock No. 16
- 33 Pay Rock No. 4
- 34 Pay Rock No. 11
- 35 Pay Rock No. 3
- 36 Pay Rock No. 10
- 37 Pay Rock No. 5
- 38 Pay Rock No. 1
- 39 Pay Rock No. 25
- 40 Pay Rock No. 7
- 41 Pay Rock No. 17
- 42 Pay Rock No. 12
- 43 Pay Rock No. 6
- 44 Pay Rock No. 13
- 45 Pay Rock No. 2
- 46 Pay Rock No. 9
- 47 Pay Rock No. 8
- 48 Vanishing No. 1
- 49 Vanishing No. 2
- 50 Nigger Baby
- 51 Black Mama
- 52 Harvey No. 2
- 53 Harvey No. 1
- 54 Wells
- 55 Lucky Day
- 56 Becky
- 57 Nancy
- 58 Cactus Kate
- 59 Yellow Bird
- 60 White Heather
- 61 Maverick No. 25
- 62 Maverick No. 24
- 63 Opportunity
- 64 Fiery Opal
- 65 Nina
- 66 Lark
- 67 Maverick No. 23
- 68 Hanford
- 69 Maverick No. 17
- 70 Maverick No. 18
- 71 Maverick No. 19
- 72 Maverick No. 20
- 73 Maverick No. 21
- 74 Maverick No. 22
- 75 Maverick No. 26
- 76 Maverick No. 27
- 77 Maverick No. 28
- 78 Sunflower
- 79 Maverick No. 29

1/ Land patented as agricultural land or placer claim, and which is some distance from known cormite deposits, is not shown.

THE GEOLOGICAL SURVEY MAKES NO WARRANTY AS TO THE ACCURACY OR COMPLETENESS OF THE INFORMATION ABOUT CLAIMS SHOWN ON THIS MAP AND ASSUMES NO LIABILITY WITH RESPECT TO THE USE OF THIS INFORMATION.

This map is preliminary and has not been edited or reviewed for conformity with U. S. Geological Survey standards and nomenclature.



Maped, edited and published by the Geological Survey  
Control by USGS and USCAGS  
Topography from aerial photographs, contour interval 20 feet  
Aerial photographs taken September 1947. Field check 1950  
Polyconic projection. 1927 North American datum.  
10,000-foot grid based on Colorado coordinate system  
Central zone  
Contour lines indicate approximate location  
Land lines unsurveyed in part of T. 50 N. R. 19 W.  
T. 50 N. R. 19 W. T. 51 N. R. 18 W. and T. 51 N. R. 19 W.  
T. 16 S. originates at the coal line (400 ft. east of  
T. 51 N. originates at the New Mexico base line

SCALE 1:24,000  
CONTOUR INTERVAL 20 FEET  
DATUM IS MEAN SEA LEVEL  
TOPOGRAPHIC BASE COMPLES WITH NATIONAL MAP ACCURACY STANDARDS  
CLAIM INFORMATION COMPILED BY R. D. SAMPLE AND H. F. ALBEE

ROAD CLASSIFICATION  
Heavy duty ———— Light duty  
Medium duty ———— Unimproved dirt  
U.S. Route ———— State Route

GATEWAY, COLO.  
N 3637 5 - W 1 1852 5/7.5  
SECTION OF 1852