

(200)  
T. 44 N.  
R. 13 W.  
No. 463

61-142



RECEIVED  
MAY 3 1953  
T.M.P.C.O.

CLAIM INDEX  
EXPLANATION

☐ Mining claim, millsite, or agricultural land, patented or surveyed for patent, plotted from surveyed plats. 1/

☐ Mining claim or millsite, unpatented, plotted from fairly reliable information, but subject to correction.

☐ Mining claim, unpatented, plotted from information of doubtful reliability and subject to correction.

LIST OF CLAIMS

- |                      |                     |                      |
|----------------------|---------------------|----------------------|
| 1 Little Pick        | 101 Dolores No. 1   | 201 Radium No. 32    |
| 2 Sunset             | 102 Kristine K.     | 202 Radium No. 7     |
| 3 Susan H.           | 103 La Salle No. 1  | 203 Jackie L.        |
| 4 Jane H.            | 104 Apex No. 9      | 204 Dorothy Jean     |
| 5 Haymaker           | 105 Apex No. 10     | 205 San Miguel       |
| 6 Haymaker Extension | 106 La Salle No. 2  | 206 Blackbird        |
| 7 Joe H.             | 107 Apex No. 11     | 207 Radium No. 8     |
| 8 Charles A. No. 35  | 108 Apex No. 12     | 208 Ito No. 1        |
| 9 Charles A. No. 34  | 109 Apex No. 13     | 209 Ito No. 3        |
| 10 Charles A. No. 33 | 110 Apex No. 14     | 210 Ito No. 2        |
| 11 Charles A. No. 30 | 111 Apex No. 15     | 211 Brighton         |
| 12 Charles A. No. 29 | 112 Apex No. 16     | 212 Charles T. No. 2 |
| 13 Charles A. No. 32 | 113 Apex No. 17     | 213 Charles T. No. 4 |
| 14 Charles A. No. 31 | 114 Apex No. 18     | 214 Charles T. No. 1 |
| 15 Charles A. No. 28 | 115 Flat No. 3      | 215 Bernie T. No. 2  |
| 16 Charles A. No. 23 | 116 Flat No. 2      | 216 Bernie T. No. 1  |
| 17 Charles A. No. 27 | 117 Flat No. 1      | 217 Summit           |
| 18 Charles A. No. 36 | 118 Apex No. 8      | 218 Fraction No. 1   |
| 19 Charles A. No. 37 | 119 Apex No. 7      | 219 Fraction No. 5   |
| 20 Charles A. No. 26 | 120 Apex No. 6      | 220 Golden Rod No. 5 |
| 21 Charles A. No. 22 | 121 Apex No. 5      | 221 Golden Rod No. 3 |
| 22 Charles A. No. 21 | 122 Apex No. 4      | 222 Golden Rod No. 4 |
| 23 Charles A. No. 25 | 123 Apex No. 3      | 223 Golden Rod       |
| 24 Charles A. No. 38 | 124 Apex No. 2      | 224 Golden Rod No. 2 |
| 25 Charles A. No. 39 | 125 Apex No. 1      | 225 Fraction No. 4   |
| 26 Charles A. No. 24 | 126 Backhorn        | 226 Golden Rod No. 1 |
| 27 Charles A. No. 20 | 127 Mildred F.      | 227 Ned              |
| 28 Charles A. No. 19 | 128 Cone No. 5      | 228 Veta Mad         |
| 29 Charles A. No. 9  | 129 Cone No. 3      | 229 Veta Glad        |
| 30 Charles A. No. 40 | 130 Cone No. 2      | 230 Georgetown       |
| 31 Last Chance       | 131 Cone No. 1      | 231 Dan              |
| 32 Charles A. No. 41 | 132 Chance          | 232 Little Yolande   |
| 33 Charles A. No. 8  | 133 Summit No. 1    | 233 Harbort          |
| 34 Charles A. No. 18 | 134 Summit No. 2    | 234 Vanadium         |
| 35 Charles A. No. 17 | 135 Summit No. 3    | 235 Oumpagh          |
| 36 Charles A. No. 7  | 136 Summit No. 4    | 236 Ellison          |
| 37 Charles A. No. 6  | 137 Summit No. 5    | 237 Burro            |
| 38 Charles A. No. 16 | 138 Summit No. 6    | 238 Jack-o'-lantern  |
| 39 Charles A. No. 15 | 139 Summit No. 7    | 239 Sunnyside        |
| 40 Charles A. No. 5  | 140 Summit No. 17   | 240 Hawkeye          |
| 41 Charles A. No. 4  | 141 Summit No. 18   | 241 Big S No. 2      |
| 42 Charles A. No. 14 | 142 Summit No. 16   | 242 Big S            |
| 43 Charles A. No. 15 | 143 Summit No. 15   | 243 Little S         |
| 44 Charles A. No. 3  | 144 Summit No. 14   | 244 Colorado Maiden  |
| 45 Charles A. No. 2  | 145 Summit No. 13   | 245 Black Belle      |
| 46 Charles A. No. 12 | 146 Summit No. 12   | 246 Jennie           |
| 47 Charles A. No. 11 | 147 Summit No. 11   | 247 University       |
| 48 Charles A. No. 1  | 148 Summit No. 10   | 248 Black Fox        |
| 49 Charles A.        | 149 Summit No. 9    | 249 Canyon View      |
| 50 Charles A. No. 10 | 150 Summit No. 8    | 250 Grant            |
| 51 Rainbow           | 151 Bean No. 13     | 251 Sunnyside        |
| 52 Last Chance       | 152 Bean No. 12     | 252 Big Four         |
| 53 Cougar            | 153 Bean No. 11     |                      |
| 54 Chico             | 154 Bean No. 10     |                      |
| 55 Little Mariel     | 155 Summit No. 19   |                      |
| 56 Lookout           | 156 Bean No. 9      |                      |
| 57 Uncle Sam         | 157 Summit No. 20   |                      |
| 58 English           | 158 Bean No. 8      |                      |
| 59 Alice             | 159 Bean No. 7      |                      |
| 60 Knoll             | 160 Bean No. 6      |                      |
| 61 Helen             | 161 Bean No. 5      |                      |
| 62 Cacti             | 162 Radium No. 27   |                      |
| 63 Mildred F. 20640  | 163 Radium No. 26   |                      |
| 64 Midnight          | 164 Radium No. 25   |                      |
| 65 Sandown           | 165 Radium No. 24   |                      |
| 66 Tailholt          | 166 Radium No. 1    |                      |
| 67 Patricia          | 167 Radium No. 23   |                      |
| 68 Rio Grande No. 3  | 168 Radium No. 22   |                      |
| 69 Hotfoot No. 4     | 169 Radium No. 21   |                      |
| 70 Valley View       | 170 Radium No. 20   |                      |
| 71 Rio Grande No. 2  | 171 Radium No. 19   |                      |
| 72 Hotfoot No. 3     | 172 Radium No. 18   |                      |
| 73 Rio Grande No. 1  | 173 Radium No. 17   |                      |
| 74 Hotfoot No. 2     | 174 Radium No. 14   |                      |
| 75 Rio Grande No. 4  | 175 Radium No. 16   |                      |
| 76 Hotfoot No. 1     | 176 Yellowbird      |                      |
| 77 Rio Grande No. 7  | 177 Radium No. 28   |                      |
| 78 Rio Grande No. 5  | 178 Radium No. 2    |                      |
| 79 Durango No. 1     | 179 Lons Star       |                      |
| 80 Durango           | 180 Captain         |                      |
| 81 Rio Grande No. 6  | 181 Hector          |                      |
| 82 Los Animas        | 182 Radium No. 11   |                      |
| 83 Hayflower         | 183 Radium No. 12   |                      |
| 84 Johnstown No. 1   | 184 Radium No. 15   |                      |
| 85 Johnstown No. 2   | 185 Bean No. 2      |                      |
| 86 Little Alma       | 186 Bean No. 3      |                      |
| 87 Johnstown No. 3   | 187 Bean No. 4      |                      |
| 88 Johnstown No. 4   | 188 Bean No. 1      |                      |
| 89 Flat No. 4        | 189 Radium No. 9    |                      |
| 90 Apex No. 19       | 190 Radium No. 10   |                      |
| 91 Apex No. 20       | 191 Radium No. 3    |                      |
| 92 Apex No. 21       | 192 Mortgage Lifter |                      |
| 93 Apex No. 22       | 193 Radium No. 6    |                      |
| 94 Apex No. 23       | 194 Radium No. 5    |                      |
| 95 Apex No. 24       | 195 Radium No. 4    |                      |
| 96 Apex No. 25       | 196 Radium No. 29   |                      |
| 97 Apex No. 26       | 197 Radium No. 30   |                      |
| 98 Apex No. 27       | 198 Radium No. 15   |                      |
| 99 Apex No. 28       | 199 Leo C.          |                      |
| 100 Dolores No. 2    | 200 Radium No. 51   |                      |

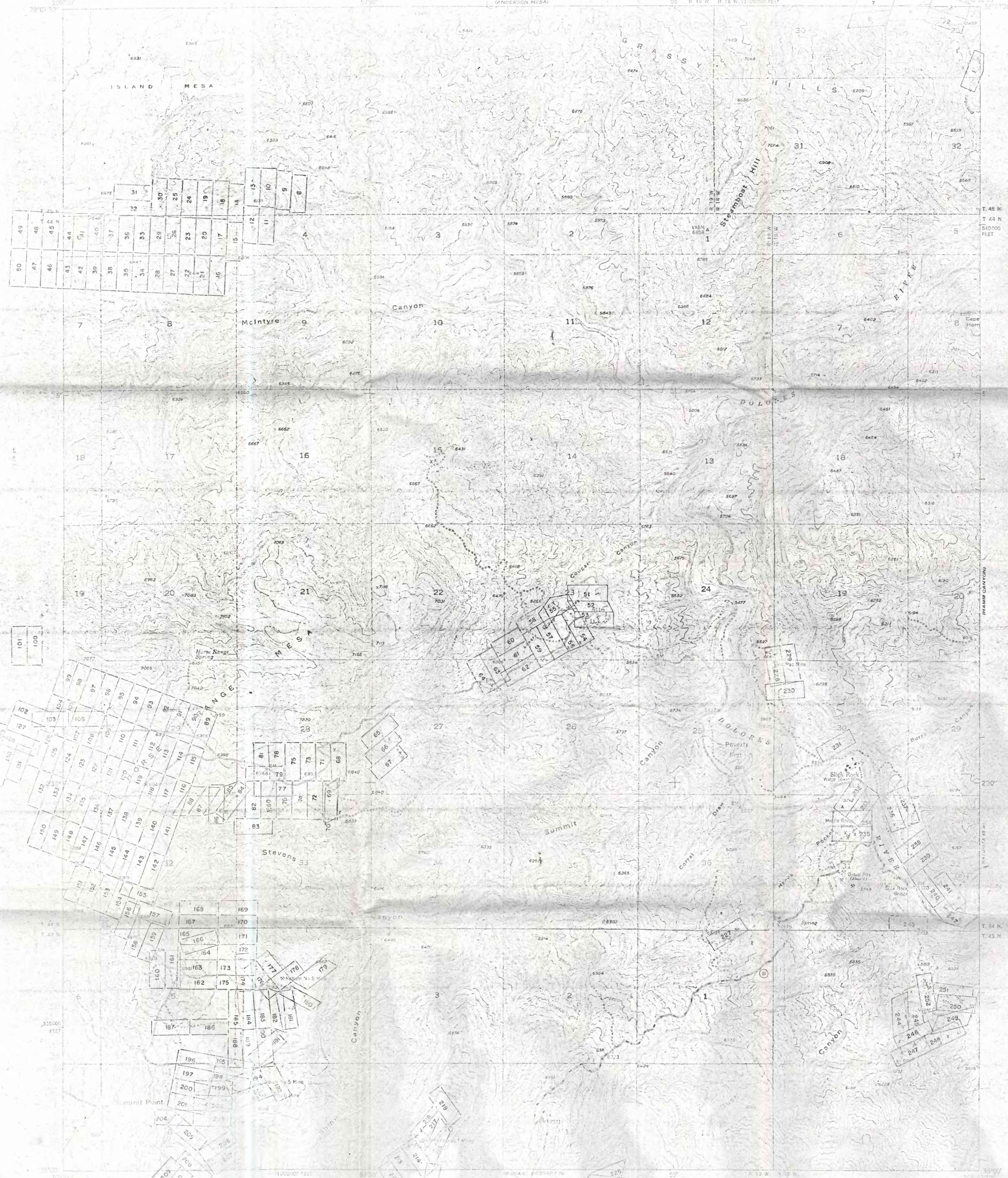
1/ Land patented as agricultural land or placer claim, and which is some distance from known carnotite deposits, is not shown.

THE GEOLOGICAL SURVEY MAKES NO WARRANTY AS TO THE ACCURACY OR COMPLETENESS OF THE INFORMATION ABOUT CLAIMS SHOWN ON THIS MAP AND ASSUMES NO LIABILITY WITH RESPECT TO THE USE OF THIS INFORMATION.

This map is preliminary and has not been edited or reviewed for conformity with U. S. Geological Survey standards and nomenclature.

UNITED STATES DEPARTMENT OF THE INTERIOR GEOLOGICAL SURVEY

HORSE RANGE MESA QUADRANGLE COLORADO-SAN MIGUEL CO. 7.5 MINUTE SERIES (1:50,000)



Map scale and other technical details.

Geographic base compiled with national map accuracy standards. CLAIM INFORMATION COMPILED BY R. A. SAMPLE, H. F. JENSEN, AND H. S. STEPHENS.

HORSE RANGE MESA, COLO.