

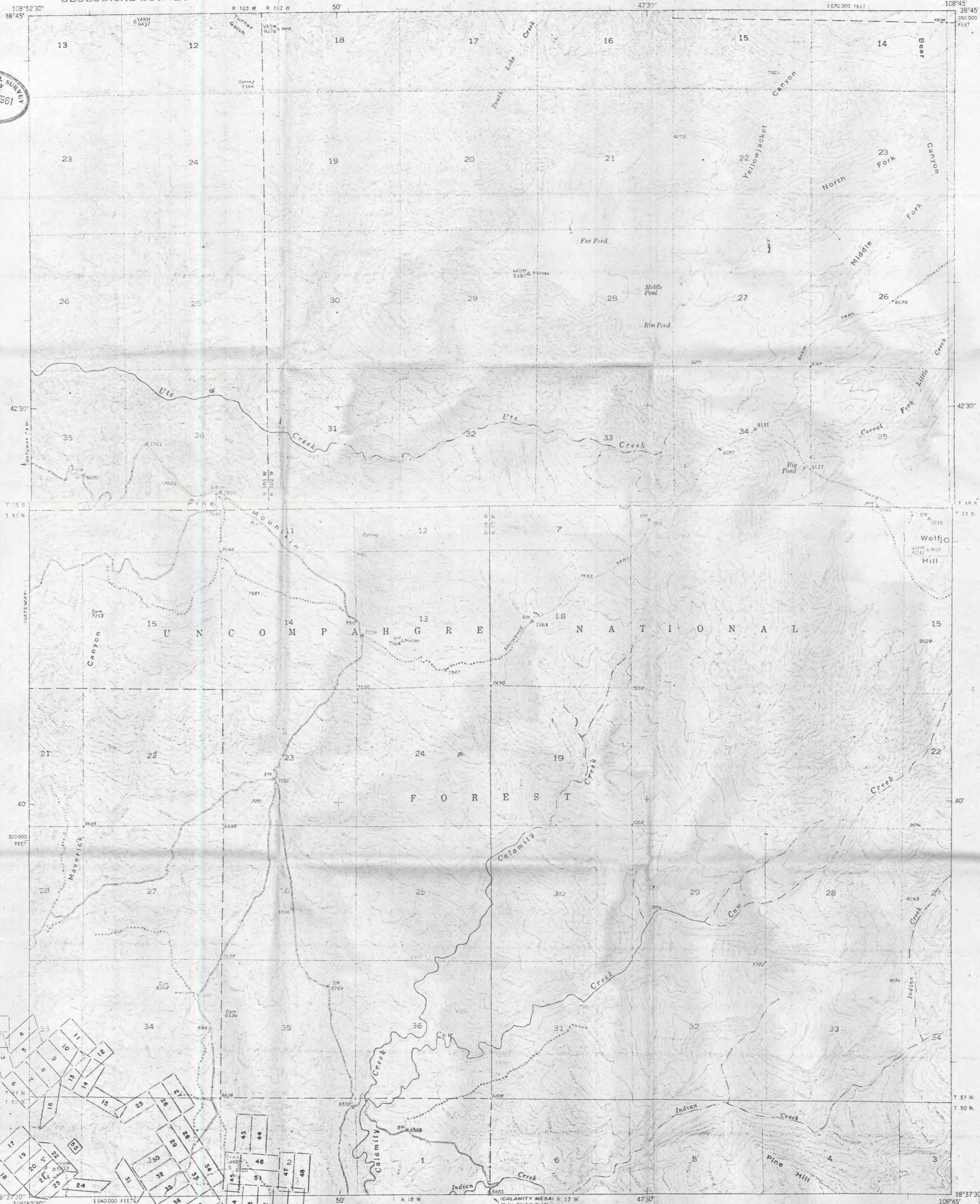
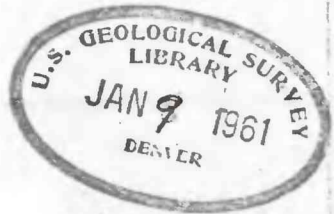
(200)  
T67/m  
no. 206

UNITED STATES  
DEPARTMENT OF THE INTERIOR  
GEOLOGICAL SURVEY

TRACE ELEMENTS MEMORANDUM REPORT 206

CLAIM MAP  
PINE MOUNTAIN QUADRANGLE  
COLORADO-MESA CO.  
7.5 MINUTE SERIES (TOPOGRAPHIC)

61-147



CLAIM INDEX

EXPLANATION

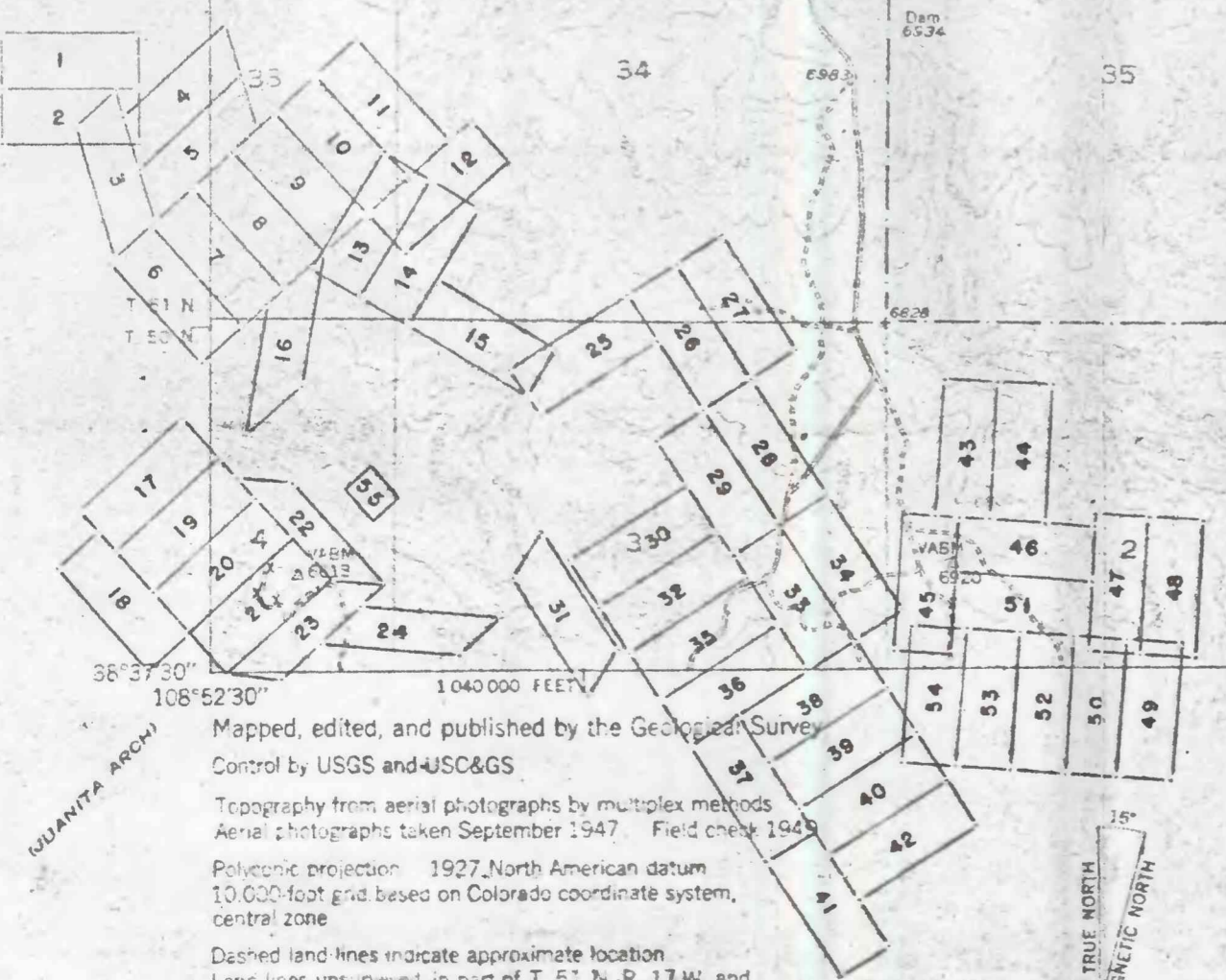
- Mining claim, millsite, or agricultural land, patented or surveyed for patent, plotted from surveyed plats.
- Mining claim or millsite, unpatented, plotted from fairly reliable information, but subject to correction.

LIST OF CLAIMS

- 1 Harvey No.2
- 2 Harvey No.1
- 3 Maverick No.25
- 4 Maverick No.24
- 5 Maverick No.23
- 6 Maverick No.17
- 7 Maverick No.18
- 8 Maverick No.19
- 9 Maverick No.20
- 10 Maverick No.21
- 11 Maverick No.22
- 12 Maverick No.14
- 13 Maverick No.15
- 14 Maverick No.13
- 15 Maverick No.12
- 16 Maverick No.16
- 17 Maverick No.26
- 18 Maverick No.29
- 19 Maverick No.27
- 20 Maverick No.28
- 21 Sunflower
- 22 Radium No.6
- 23 Radium No.4
- 24 Radium No.5
- 25 Maverick No.11
- 26 Maverick No.10
- 27 Maverick No.9
- 28 Maverick No.8
- 29 Maverick No.7
- 30 Maverick No.2
- 31 Maverick No.1
- 32 Maverick No.3
- 33 Maverick No.5
- 34 Maverick No.6
- 35 Maverick No.4
- 36 Arrowhead No.33
- 37 Arrowhead No.16
- 38 Arrowhead No.30
- 39 Arrowhead No.22
- 40 Arrowhead No.23
- 41 Arrowhead No.13
- 42 Arrowhead No.24
- 43 Arrowhead No.2
- 44 Arrowhead No.1
- 45 Arrowhead No.31
- 46 Arrowhead No.3
- 47 Arrowhead No.18
- 48 Arrowhead No.19
- 49 Arrowhead No.17
- 50 Arrowhead No.6
- 51 Arrowhead No.4
- 52 Arrowhead No.5
- 53 Arrowhead No.20
- 54 Arrowhead No.21
- 55 Maverick Mill Site

THE GEOLOGICAL SURVEY MAKES NO WARRANTY AS TO THE ACCURACY OR COMPLETENESS OF THE INFORMATION ABOUT CLAIMS SHOWN ON THIS MAP AND ASSUMES NO LIABILITY WITH RESPECT TO THE USE OF THIS INFORMATION.

This map is preliminary and has not been edited for conformity with Geological Survey format and nomenclature



Mapped, edited, and published by the Geological Survey  
Control by USGS and USCGS  
Topography from aerial photographs by multiplex methods  
Aerial photographs taken September 1947. Field check 1948  
Polyconic projection: 1927 North American datum  
10,000-foot grid based on Colorado coordinate system,  
central zone  
Dashed land lines indicate approximate location  
Lanc lines are shown in part of T. 51 N., R. 17 W. and  
in part of T. 51 N., R. 18 W.  
Unchecked elevations are shown in brown

SCALE 1:24000  
CONTOUR INTERVAL 20 FEET  
DATUM IS MEAN SEA LEVEL  
TOPOGRAPHIC BASE COMPLIES WITH NATIONAL MAP ACCURACY STANDARDS  
CLAIM INFORMATION COMPILED BY R.D. SAMPLE AND H.F. ALBEE  
JULY 1951

ROAD CLASSIFICATION  
HARD SURFACE ALL WEATHER ROADS  
HEAVY DUTY  
MEDIUM DUTY  
LOOSE SURFACE, GRADED, OR NARROW HARD SURFACE  
U.S. ROUTE  
STATE ROUTE  
PINE MOUNTAIN, COLO.  
N38375-W10645/7.5  
EDITION OF 1951