

U. S. GEOLOGICAL SURVEY

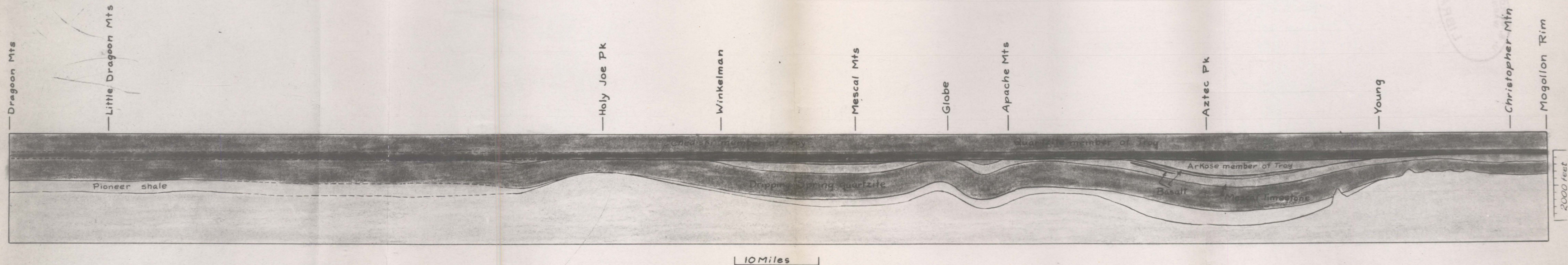


FIGURE 11. RECONSTRUCTION OF NORTH-SOUTH SECTION AFTER THE TROY QUARTZITE WAS DEPOSITED

Note particularly pre-Apache surface and pre-Troy surface; vertical exaggeration of section causes subtle folds to be overemphasized. Lines dashed where there are no outcrops or remnants for interpretation.

This map is preliminary and has not been edited or reviewed for conformity with U. S. Geological Survey standards and nomenclature.