

UNITED STATES
DEPARTMENT OF THE INTERIOR
GEOLOGICAL SURVEY

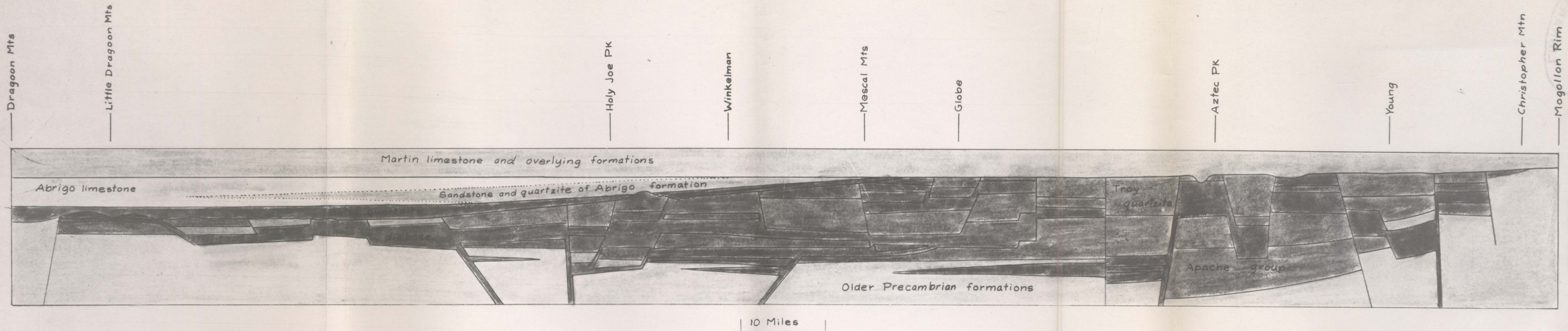


FIGURE 16. DIAGRAMMATIC RECONSTRUCTION OF NORTH-SOUTH GEOLOGIC SECTION AT THE END OF DEVONIAN TIME

Structures are diagrammatic but the positions of the Troy quartzite and the Apache group relative to the pre-Bolsa and pre-Martin unconformities is probably representative.

This map is preliminary and has not been edited or revised for conformity with U. S. Geological Survey standards and nomenclature.

This map is preliminary and has not been edited or revised for conformity with U. S. Geological Survey standards and nomenclature.