

This map is preliminary and has not been edited for conformity with Geological Survey format and nomenclature.

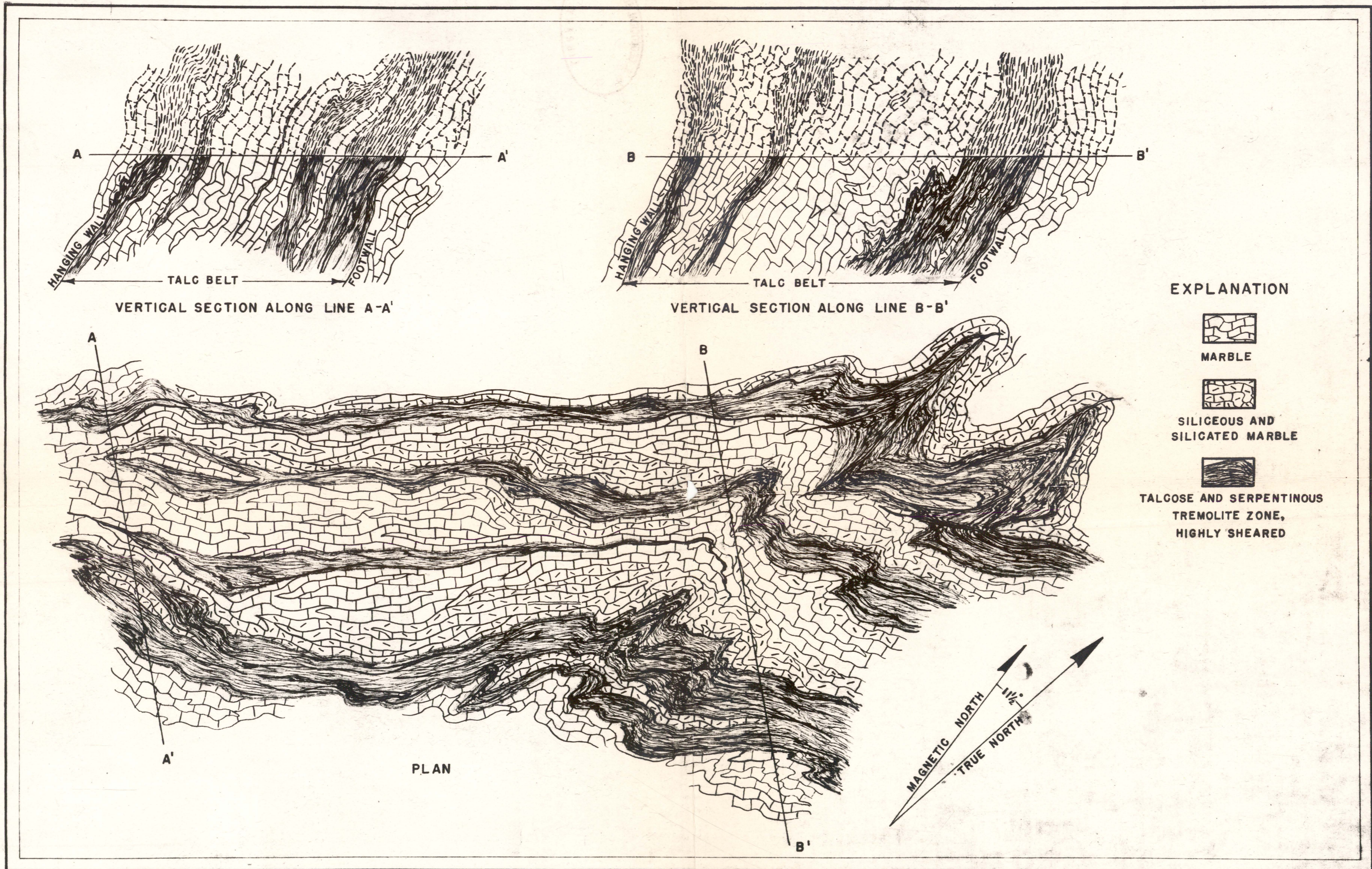


Figure 12. **GEOLOGICAL FEATURES OF THE Talc Belt, as exposed, ON THE FOURTH LEVEL OF THE WOODCOCK MINE, NORTH OF BALMAT, NEW YORK.** The folds plunge 30° to 60° N. The marble interlayered with the talc is calcitic. The "x" on the plan view marks the site of the photograph shown on plate 1130.

50 30 10 0 50 100 150 FEET

Figure 12