

This map is preliminary and has not been edited for conformity with Geological Survey format and nomenclature.

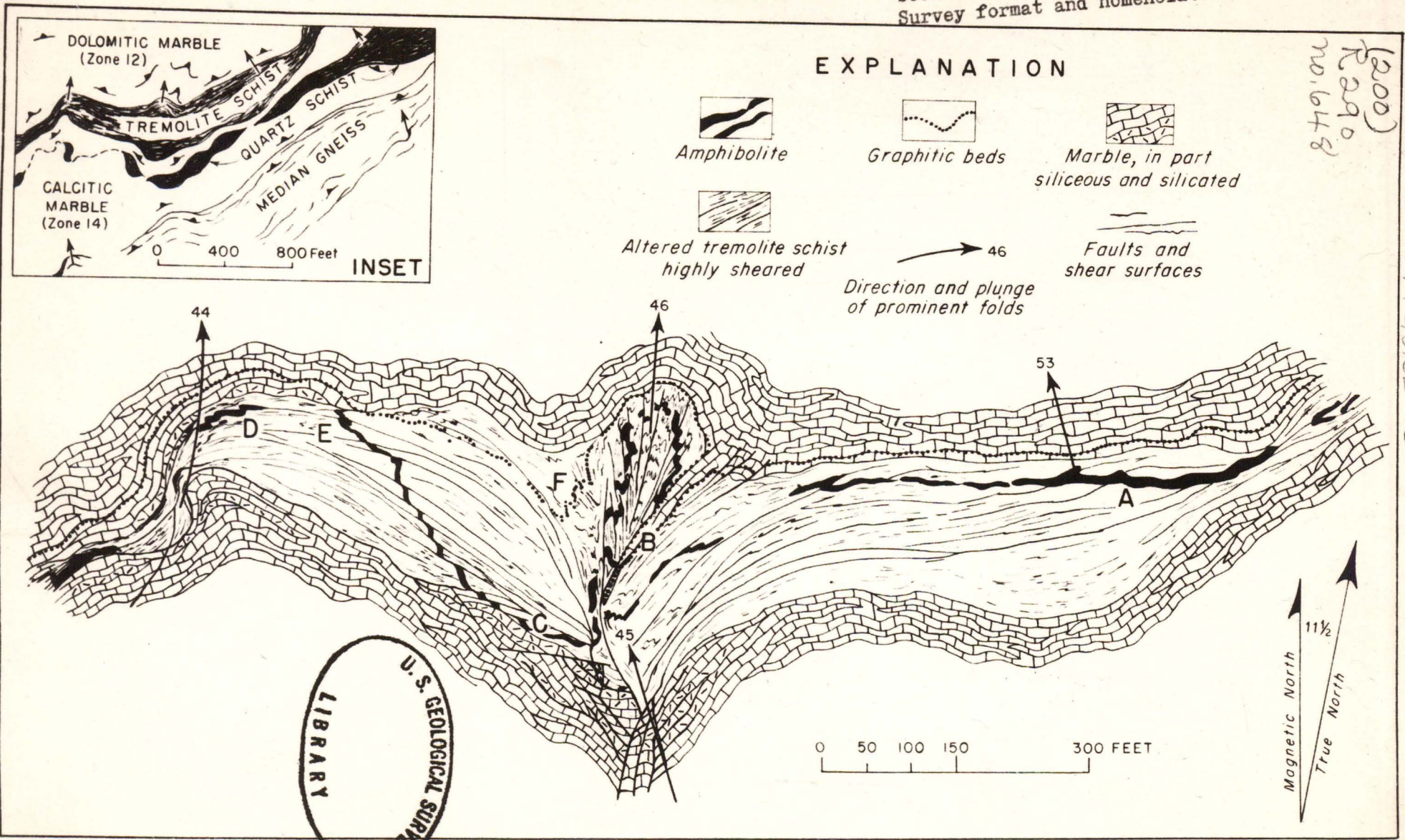


FIGURE 13

Figure 13. Generalized geologic map of the Talcville talc belt as exposed on the seventh level of the International Talc Co. No. 2½ mine, Talcville, N. Y. The thicknesses of the amphibolite and the graphitic bed are exaggerated.

Figure 13