

This map is preliminary and has not been edited for conformity with Geological Survey format and nomenclature.

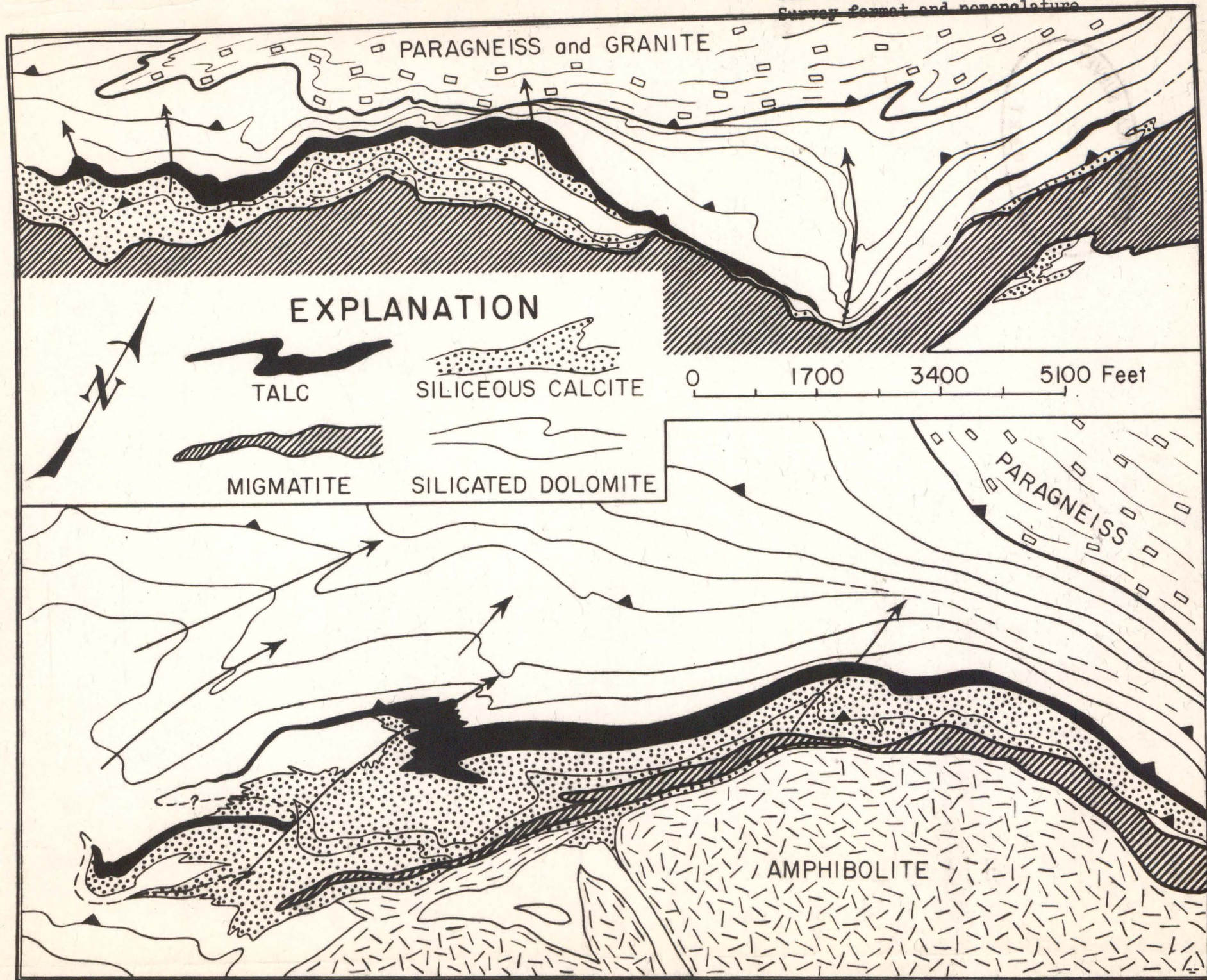


Figure 4

Figure 4. Generalized map of parts of the Sylvia Lake-Cedar Lake marble belt, showing distribution of highly dolomitic and siliceous-calcitic parts of the footwall marble.

This map is preliminary and has not been edited for conformity with Geological Survey format and nomenclature.

FIG. 4