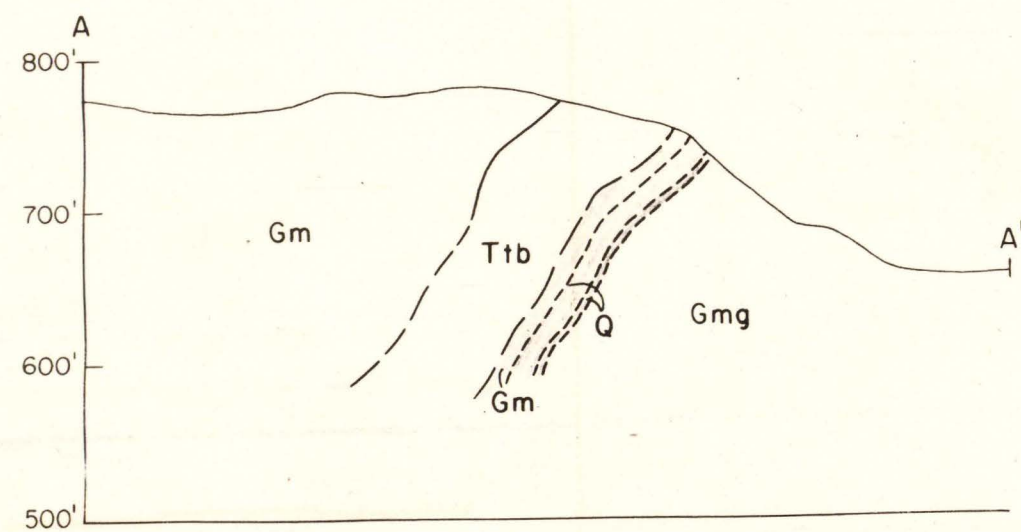


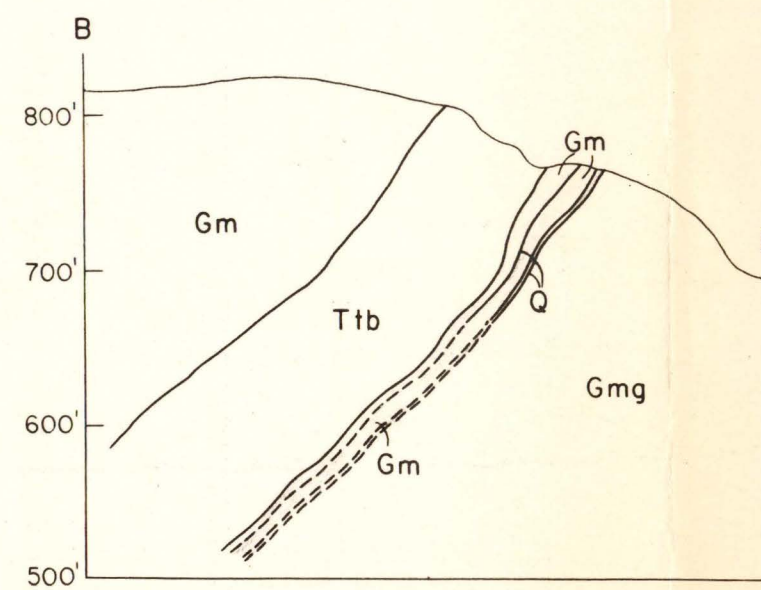
TOPOGRAPHIC AND GEOLOGIC MAP

EXPLANATION

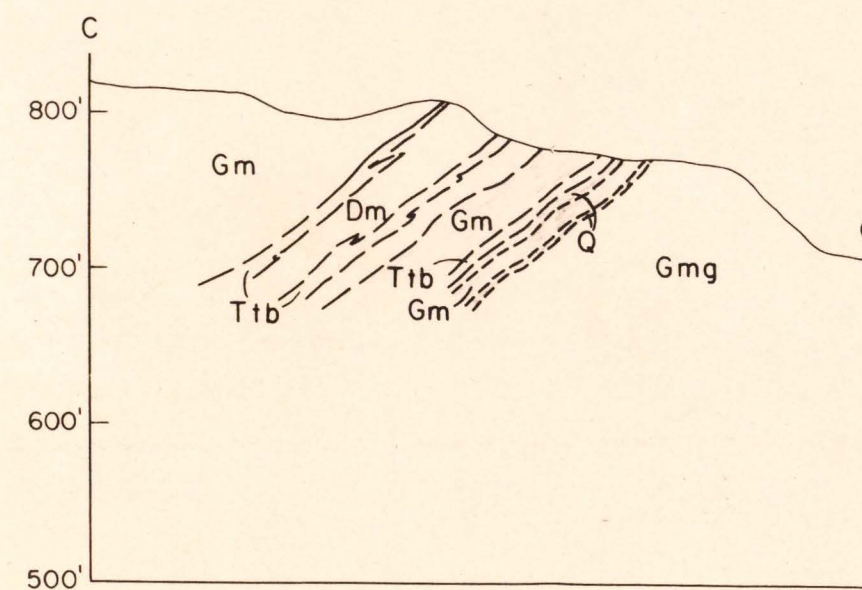
- Gm  
Marble, dolomitic, diopsidic
  - Ttb  
Tremolite-Talc belt
  - Q  
Quartzite commonly pyritic
  - Gmg  
Feldspathic gneiss (Median Gneiss)
  - Strike and Dip of foliation
  - Direction and amount of plunge of folds
  - Prospect pit
  - Shaft
  - Dump
  - Roads
  - DDH  $\angle$  60°S  
Drill hole with approximate direction and dip
- 0 100 200 300  
Scale in feet  
Contour interval 10 feet



Vertical section along A-A'



Vertical section along B-B'



Vertical section along C-C'

*Note: Tremolite outcrops near New York Central R.R. with minor faults.*