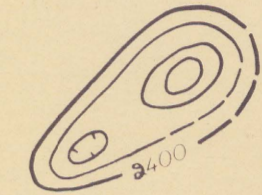


EXPLANATION



Magnetic contours showing total intensity magnetic field of the earth in gammas relative to arbitrary datum  
Dashed lines indicate closed areas of lower magnetic intensity, dashed where data are incomplete

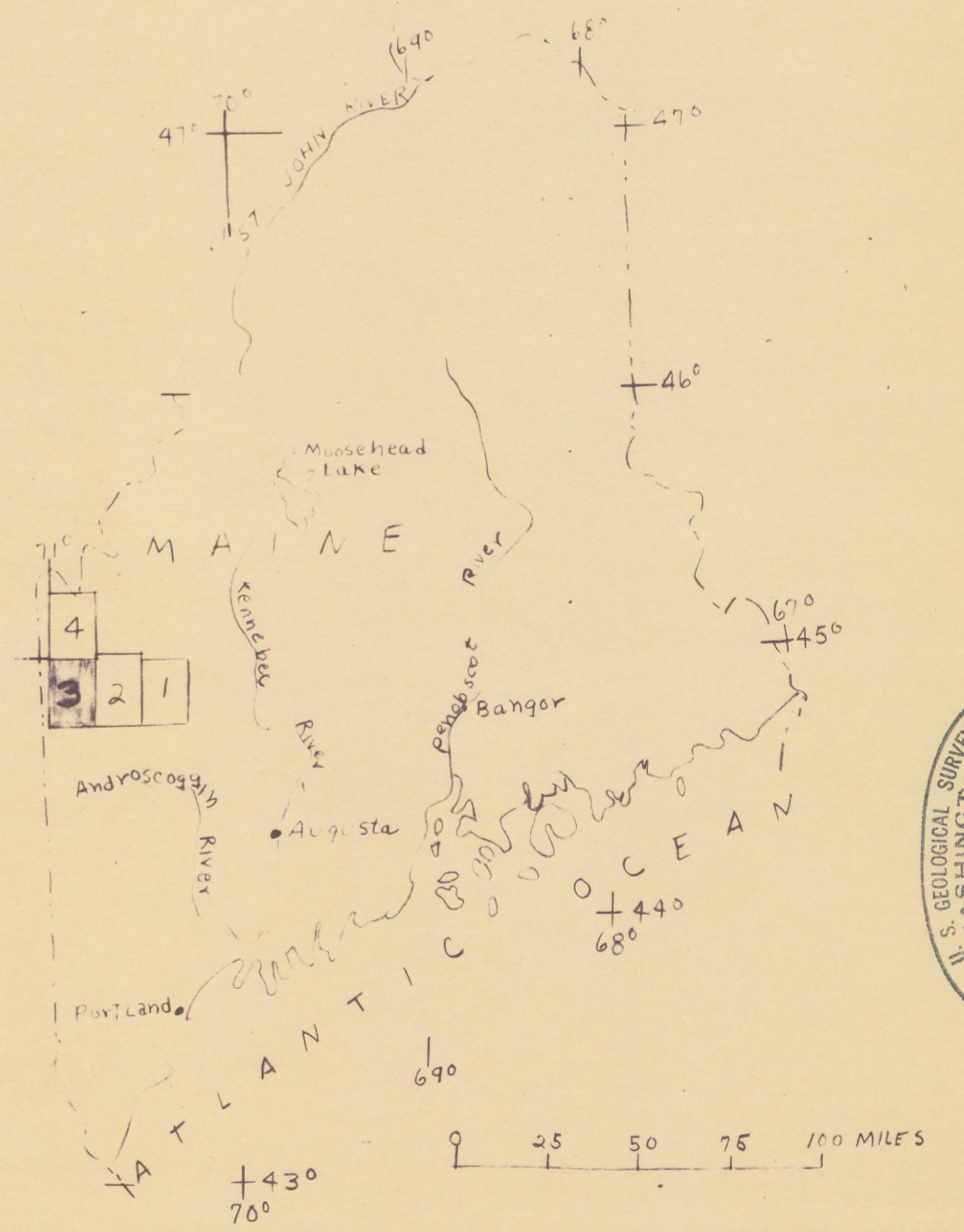
Measured maximum or minimum intensity within closed high or closed low

Flight path

showing location and spacing of data

NOTE

Aeromagnetic data are obtained and compiled along a flight path, whereas ground magnetic surveys are made at separate points. Errors within the normal limits of aeromagnetic measurement may cause slight discrepancies between flight lines in an aeromagnetic map, which would be more obvious than similar discrepancies between points in a ground magnetic map. For this reason as well as the fact that aeromagnetic data are obtained along a single aeromagnetic traverse as in interpreting an anomaly indicated by a single ground station.



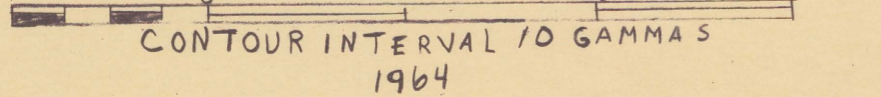
INDEX MAP OF MAINE SHOWING LOCATION OF THIS AND ACCOMPANYING OPEN FILE MAPS

Base map from U.S. Geological Survey topographic quadrangle, 1840

AEROMAGNETIC MAP OF THE OQUOSSOC QUADRANGLE  
OXFORD AND FRANKLIN COUNTIES, MAINE

By  
G. R. BOYNTON and F. P. GILBERT

SCALE 1:62,500



CONTOUR INTERVAL 10 GAMMAS

1964

GEOPHYSICAL INVESTIGATIONS  
PRELIMINARY MAP

Aeromagnetic survey flown at 3500 feet barometric elevation, 1964

This map is preliminary and has not been edited or reviewed for conformity to Geological Survey standards.

U. S. GEOLOGICAL SURVEY  
Released to open files  
March 10, 1964

This map is preliminary and has not been edited or reviewed for conformity to Geological Survey standards.

Maine (Oquossoc quad). Aeromagnetic. 1:62,500.

cop. 1.

M(200)  
R290  
no. 64-19  
C. 1

