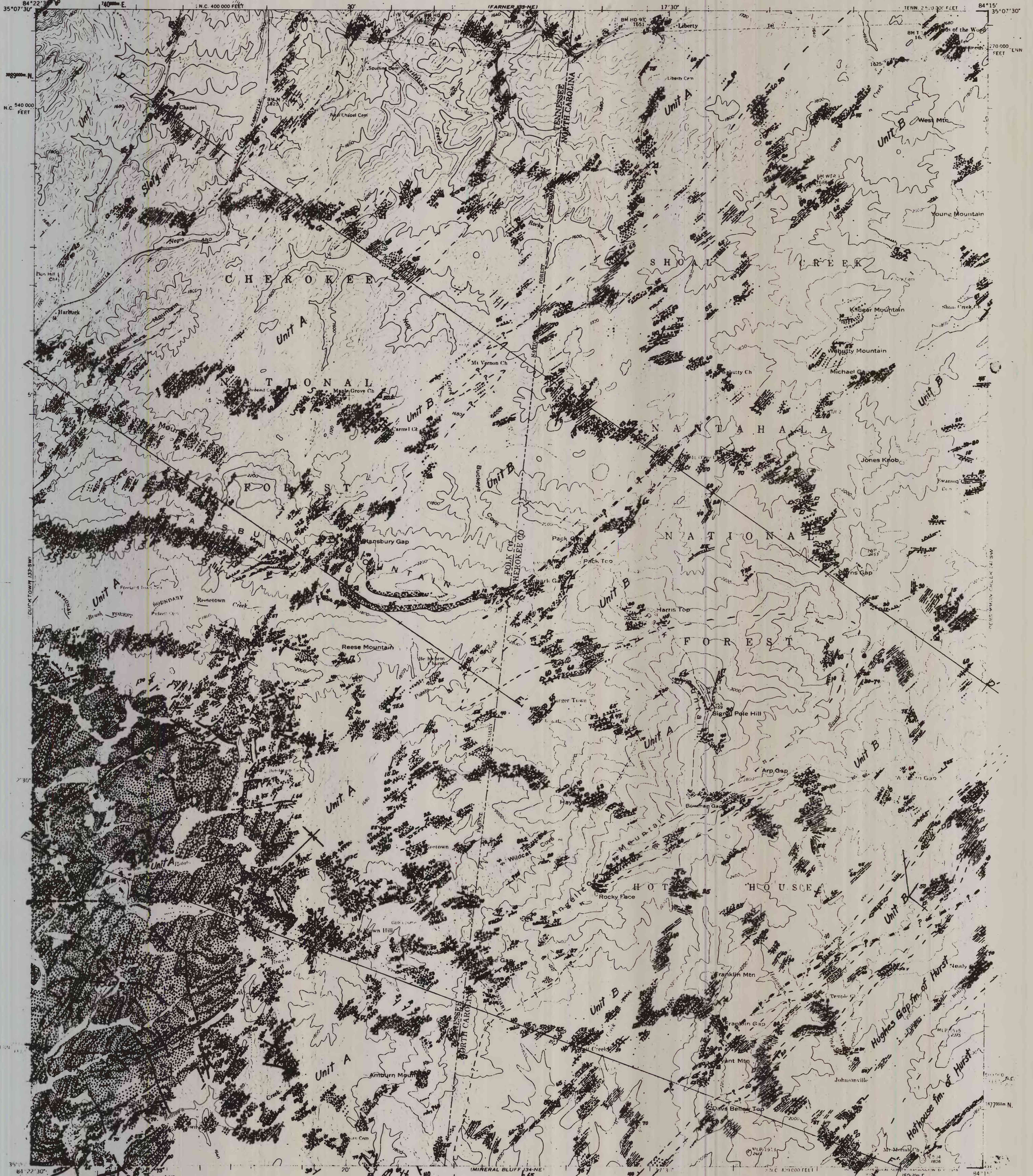


UNITED STATES
DEPARTMENT OF THE INTERIOR
GEOLOGICAL SURVEY

UNITED STATES
TENNESSEE VALLEY AUTHORITY
MAPS AND SURVEYS BRANCH

ISABELLA QUADRANGLE
TENNESSEE-NORTH CAROLINA
7.5 MINUTE SERIES (TOPOGRAPHIC) 133-SE



Mapped and edited by Tennessee Valley Authority.
Published by the Geological Survey, U.S. Department of the Interior.
Control by USGS, USGS, and TVA.
Topography by multiple methods from aerial
photographs taken 1952. Field examination by TVA, 1957.
Polyconic projection, 1927 North American datum.
10,000-foot grid based on Tennessee and
North Carolina rectangular coordinate systems.
1000 meter Universal Transverse Mercator grid ticks,
Zone 16, shown in blue.
Fine red dashed lines indicate selected fence and field lines
from aerial photographs. This information is un-checked.

TRUE NORTH
MAGNETIC NORTH
APPROXIMATE MEAN
DECLINATION 1957

SCALE 1:24,000
CONTOUR INTERVAL 40 FEET
DATUM IS MEAN SEA LEVEL
THIS MAP COMPLIES WITH NATIONAL MAP ACCURACY STANDARDS
FOR SALE BY U.S. GEOLOGICAL SURVEY, WASHINGTON 25, D. C.
TENNESSEE DIVISION OF GEOLOGY, NASHVILLE, TENN.
U. S. TENNESSEE VALLEY AUTHORITY, CHATTANOOGA OR KNOXVILLE, TENN.
A FOLDER DESCRIBING TOPOGRAPHIC MAPS AND SYMBOLS IS AVAILABLE ON REQUEST

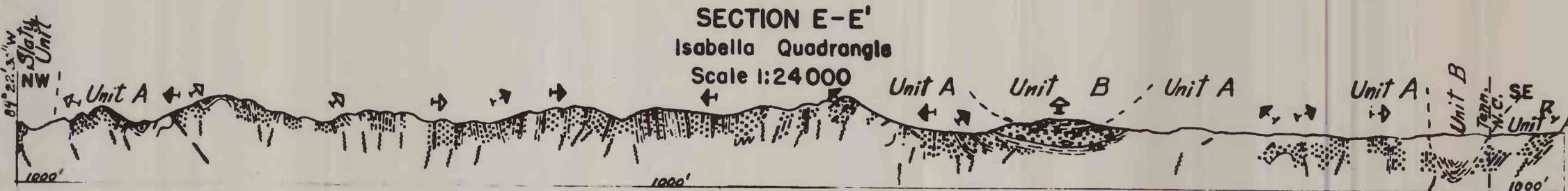
ILL. KENTUCKY
MO. TENN. N.C.
POLK CO. TENNESSEE — CHEROKEE CO. NORTH CAROLINA
QUADRANGLE LOCATION

GEOLOGIC MAP
OF THE
ISABELLA QUADRANGLE

Geology by:
Robert M. Herron 1960-63;
geology of denuded Ducktown district
derived from large-scale surface maps
of the Tennessee Copper Co. with
additions.

ISABELLA, TENN.-N.C.
1957

SECTION E-E'
Isabella Quadrangle
Scale 1:24,000



SECTION F-F'
Isabella Quadrangle
Scale 1:24,000

