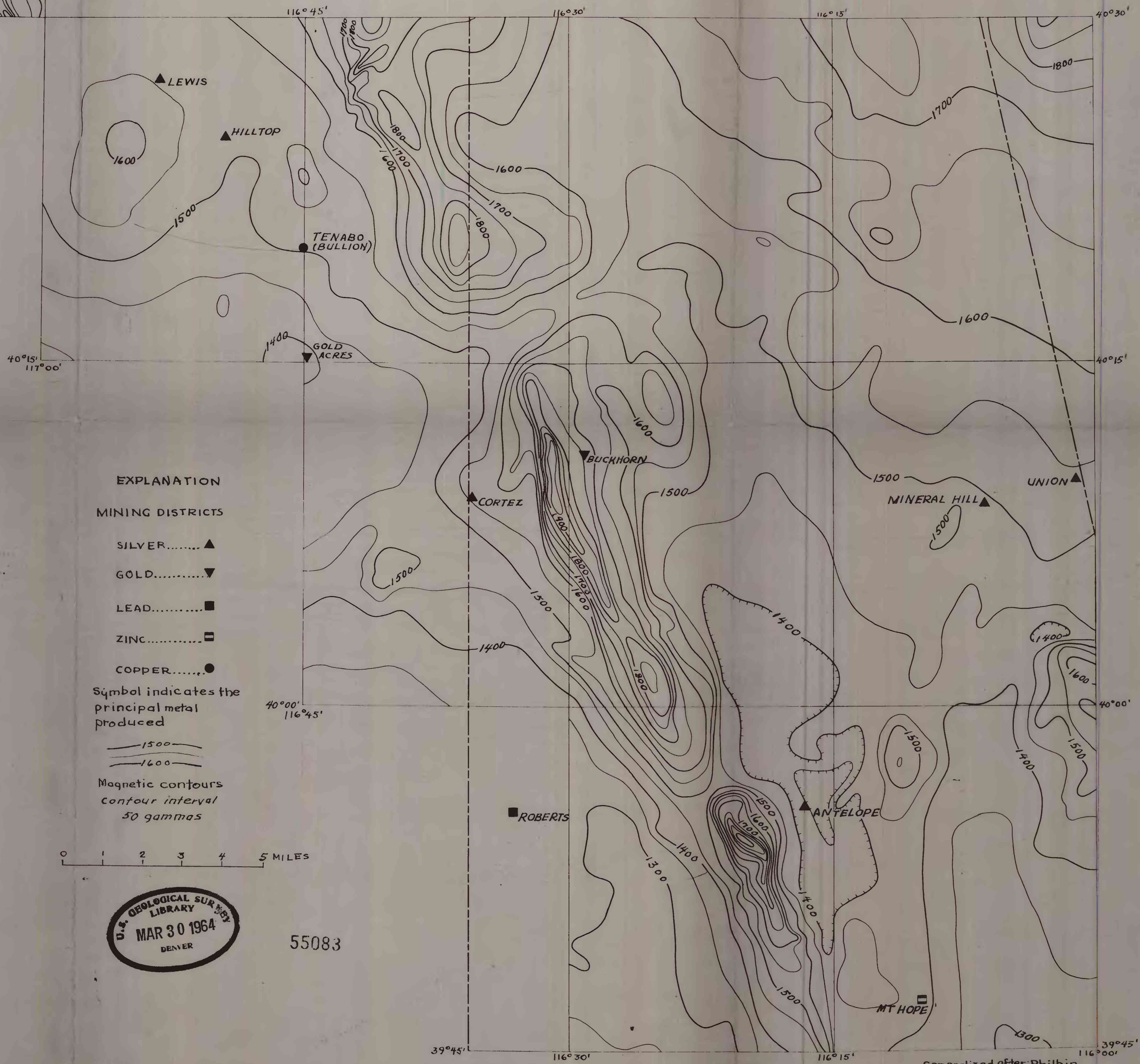


THIS MAP IS PRELIMINARY AND HAS NOT BEEN EDITED OR REVIEWED FOR CONFORMITY WITH U.S. GEOLOGICAL SURVEY STANDARDS AND NOMENCLATURE



EXPLANATION

MINING DISTRICTS

SILVER.....▲

GOLD.....▼

LEAD.....■

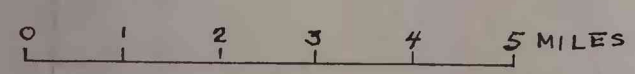
ZINC.....▣

COPPER.....●

Symbol indicates the principal metal produced

— 1500 —
— 1600 —

Magnetic contours
contour interval
50 gammas



U.S. GEOLOGICAL SURVEY
LIBRARY
MAR 30 1964
DENVER

55083

U.S. GEOLOGICAL SURVEY
LIBRARY
MAY 30 1964
DENVER

PLEASE REPLACE IN POCKET
IN BACK OF BOUND VOLUME

Figure 5. Aeromagnetic map of parts of Lander and Eureka Counties, Nevada. (same area as figure 1.)

Generalized after Philbin, Muescke, and McCaslin, 1963