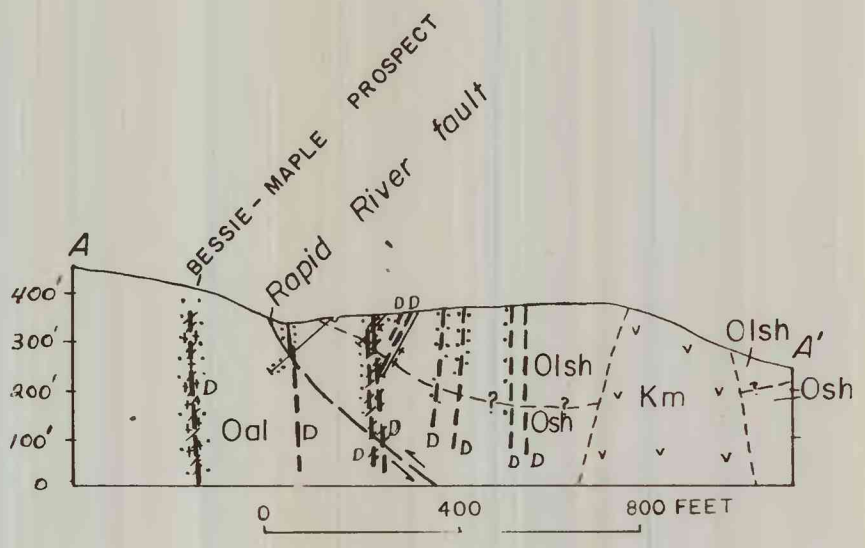
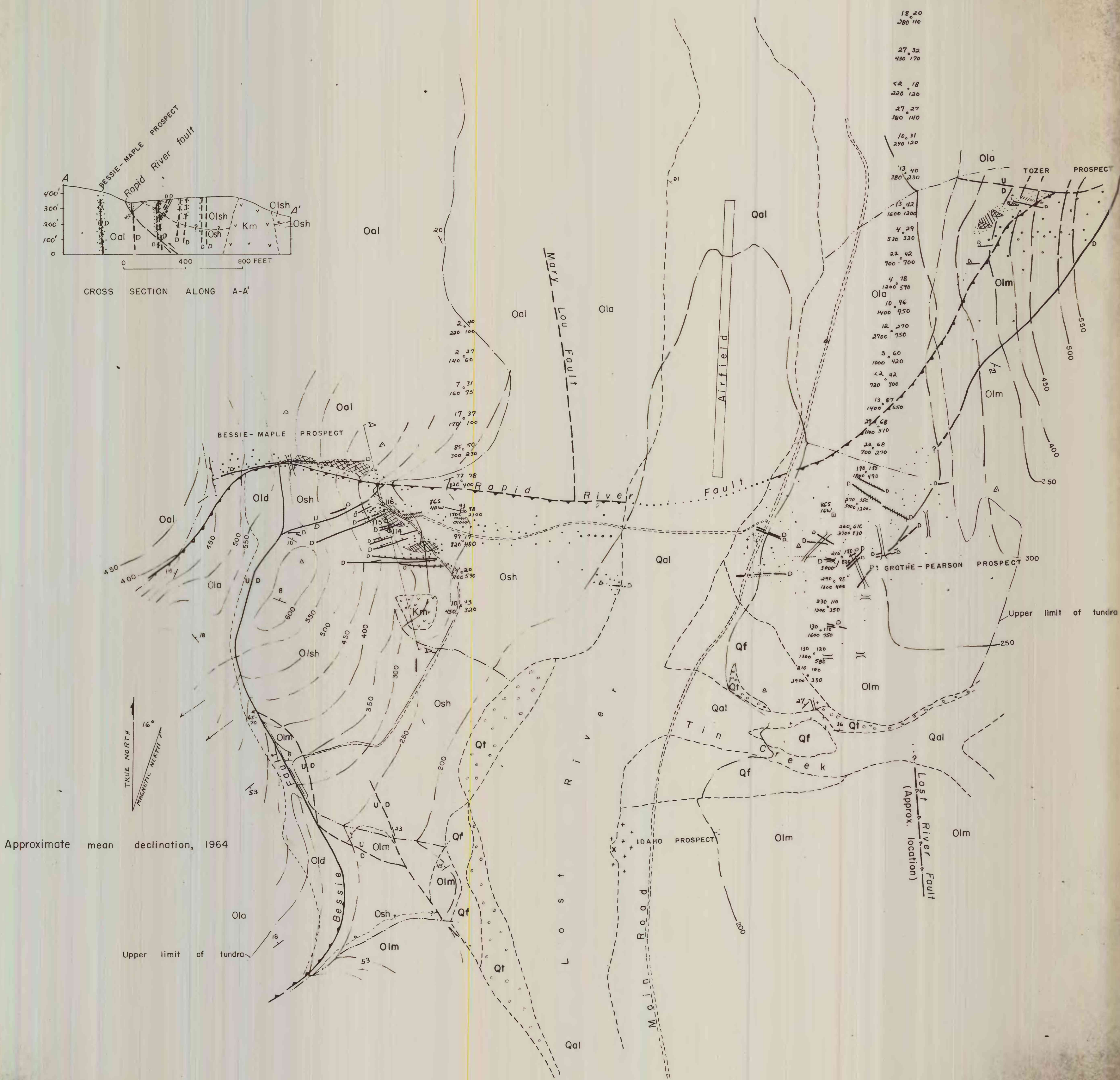


65-143



CROSS SECTION ALONG A-A'



GEOLOGIC MAP OF THE BERYLLIUM AND TIN DEPOSITS IN LOST RIVER VALLEY, WESTERN SEWARD PENINSULA, ALASKA

0 400 800 1200 FEET

Contour interval 50 feet  
 Datum is approximate mean sea level