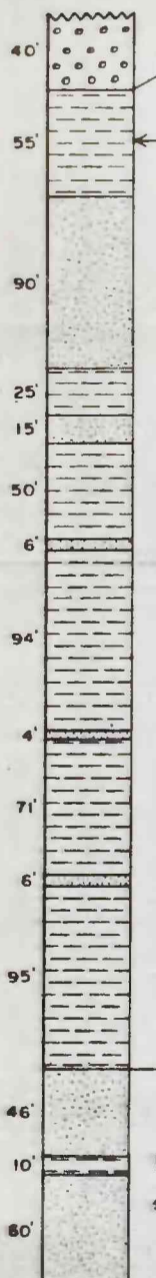


Described section,  
SE 1/4 SE 1/4 sec 17  
(Leshner, 1914 b, p 4)



approximately 0.8 mile

Local unconformity?

Core hole  
104  
SW 1/4 sec. 21



Core hole  
101  
SW 1/4 sec. 21



See log for lower portion of 101, table 1

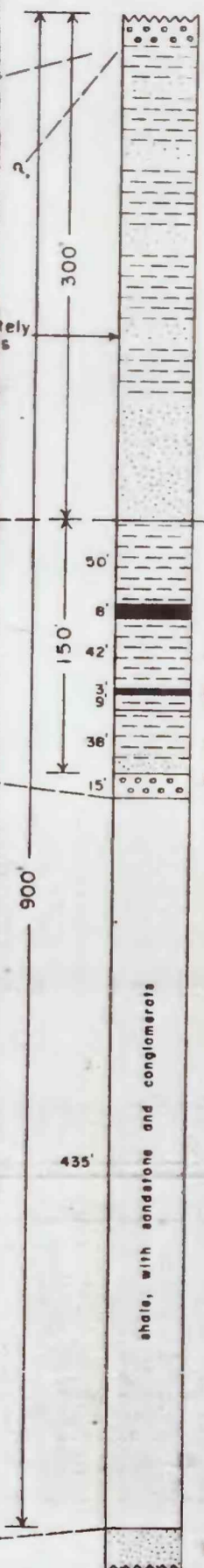
Core hole  
102  
SW 1/4 sec. 21



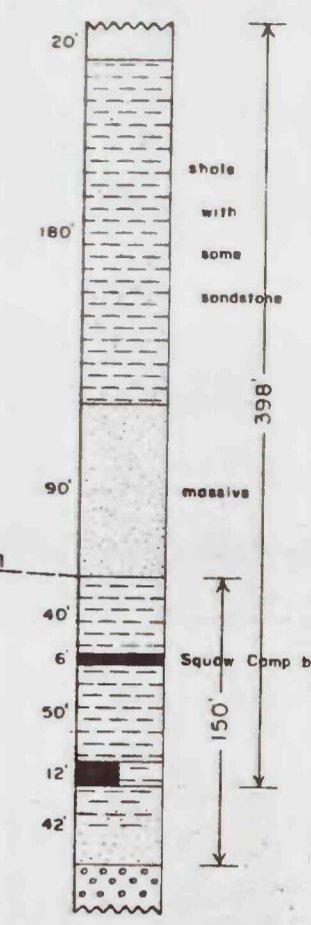
Core hole  
103  
SW 1/4 sec. 21



Described section,  
Crest of Panther Ridge  
NE 1/4 sec. 32 (?)  
(Williams, 1914, p 36-37)



Described section,  
Coal Butte  
NW 1/4 NW 1/4 sec. 33  
(Leshner, 1914 b, p 4, 9)



EXPLANATION

- Coal bed
- Coal partings
- Shale
- Siltstone
- Sandstone
- Pebbly sandstone
- Conglomerate

Stated or inferred thickness of beds in described sections, in feet

Notations supplement symbols

The apparent contacts between rudely graded units are suggested by heavy horizontal lines in the graphic core logs

CORRELATION OF BEDS IN SQUAW BASIN, OREGON

By  
R. G. WAYLAND

